

Medicaid Suspension for Juveniles





Medicaid Suspension for Juveniles

WHAT IS MEDICAID SUSPENSION?

Under Medicaid suspension, Apple Health (Medicaid) clients involved in the justice system have their coverage paused during an institutional stay. Apple Health will not cover services during Medicaid suspension.

Apply for coverage

A Juvenile rehabilitation liaison or a coordinator from your institution can help you apply for Apple Health coverage. You don't need to apply if you already have Apple Health coverage.

Institutions – secured residential facility

During suspension

- Your Apple Health coverage is suspended while in a secured residential facility.
- Your outpatient medical needs are provided by the institution during your stay.
- Your Apple Health covers inpatient services.

Some examples of inpatient services include:

- Surgical services.
- Hospital care services.
- Pregnancy and delivery services.

Continuing coverage after suspension

Your coverage is automatically reinstated after release.



Community Facilities – Juvenile Rehabilitation Group Home

During stay

- You will keep your Apple Health coverage while involved in the juvenile justice system and are ordered to a community facility.
 - You will stay enrolled in your current Apple Health plan or choose a plan (Apple Health Core Connection if you are in foster care). This means Apple Health will pay your provider directly.
 - Your coverage will be suspended if you transition back into an institution.

Continuing coverage after release

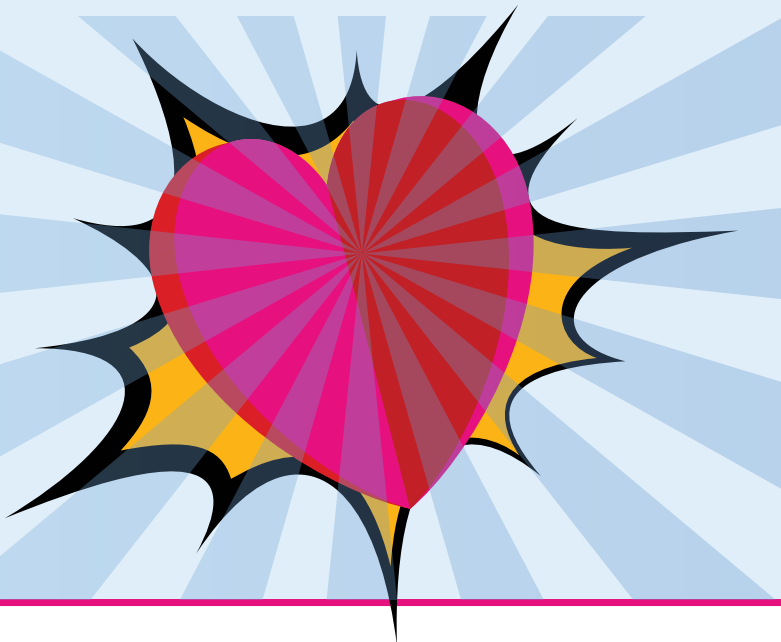
- Your Apple Health coverage will continue through your transition back into the community as long as you remain eligible. You can continue to use your coverage to access services.



Managed care

All Apple Health managed care plans cover the same basic services, but they have some differences in the way they provide services. Each health plan has its own network of providers, hospitals, and pharmacies. Verify with the health plan that the providers you prefer are in the plan's network.

Your plan coordinates physical health, mental health, and substance use disorder treatment services to provide whole-person care under one health plan.



Enrollment

If you are:

- On your parent/guardian's coverage you are automatically enrolled in the same managed care plan as your parent/guardian.
- On your own coverage, you will have the option to select your own managed care plan that is offered in your county. If you do not choose a plan, one will be auto-assigned to you.
- Receiving foster care or adoption support medical, you will have the option to be enrolled in Apple Health Core Connections with Coordinated Care of Washington or Apple Health without a managed care plan (also known as fee-for-service).
- Once your coverage is reinstated you can start receiving medical and behavioral health services. You may need to contact your plan to coordinate care and get your plan ID numbers or cards.

Apple Health managed care plans

Learn more about managed care and how to contact the plans online at hca.wa.gov/apple-health-managed-care.



Managed care plan	Phone number
Amerigroup (AMG)	1-800-600-4441
Community Health Plan of Washington (CHPW)	1-800-440-1561
Coordinated Care of Washington (CCW)	1-877-644-4613
Molina Healthcare of Washington, Inc. (MHW)	1-800-869-7165
UnitedHealthcare Community Plan (UHC)	1-877-542-8997



Washington State
Health Care Authority