

# Delivery Statistics Report (2022 Births)

## St Joseph Medical Center

Tacoma, WA Pierce County  
Perinatal Level of Care: Level 3

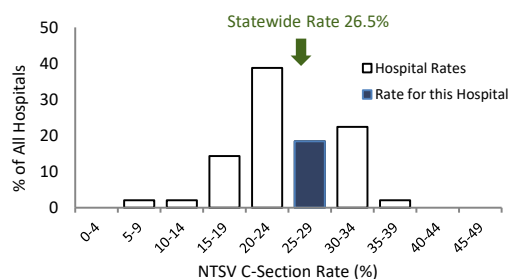
### Deliveries and Medicaid Status

	2020	2021	2022	3-year TOTAL	Net Change '21 to '22
Total Deliveries	4,246	4,302	4,338	12,886	36
Deliveries with Medicaid-paid Pregnancy Care	2,113	2,006	2,121	6,240	115
Percent of Deliveries with Medicaid-paid Pregnancy Care	50%	47%	49%	48%	2%
Percent of Deliveries with Medicaid-paid Pregnancy Care in County	42%	41%	43%	42%	2%

### C-Sections Among Nulliparous Term Singleton Vertex (NTSV) Deliveries

	2020	2021	2022	Net Change '21 to '22	3-year
NTSV Deliveries	1,341	1,356	1,407	51	4,104
<b>NTSV C-Section Rates</b>					
Rate for this Hospital	24.8%	23.2%	28.6%	5.3%	25.6%
Level 3 Hospitals	25.1%	26.3%	27.3%	1.0%	26.2%
Hospitals Statewide	24.9%	25.5%	26.5%	1.1%	25.6%

Distribution of NTSV C-Section Rates  
2022 Births at WA Non-Military Hospitals

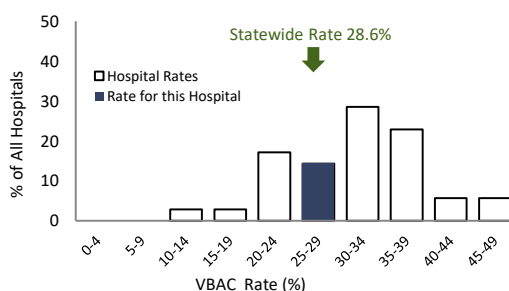


This hospital's 2022 NTSV C-Section rate of 28.6% was higher than the statewide rate of 26.5% .

### Vaginal Births After Cesarean (VBAC) for Term Singleton Vertex Deliveries

	2020	2021	2022	Net Change '21 to '22	3-year
Deliveries Post-C-Sec	433	380	429	49	1,242
<b>VBAC Rates</b>					
Rate for this Hospital	32.3%	31.1%	28.2%	-2.8%	30.5%
Level 3 Hospitals	27.7%	28.6%	28.2%	-0.4%	28.2%
Hospitals Statewide	27.4%	27.7%	28.6%	0.9%	27.9%

Distribution of VBAC Rates  
2022 Births at WA Non-Military Hospitals

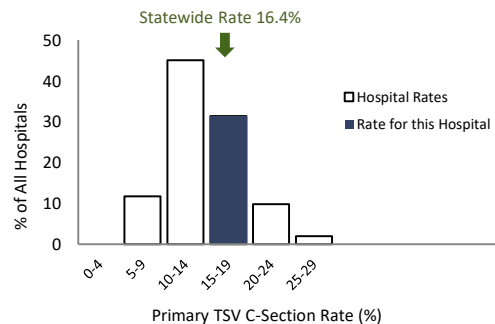


This hospital's 2022 VBAC rate of 28.2% was close to the statewide rate of 28.6% .

### Primary C-Sections Among Term Singleton Vertex (TSV) Deliveries

	2020	2021	2022	Net Change '21 to '22	3-year
TSV Deliveries/No Prior C	2,913	2,939	2,934	-5	8,786
<b>Primary C-Section Rates</b>					
Rate for this Hospital	14.7%	14.2%	17.6%	3.4%	15.5%
Level 3 Hospitals	15.1%	16.1%	17.4%	1.2%	16.2%
Hospitals Statewide	15.0%	15.5%	16.4%	0.9%	15.7%

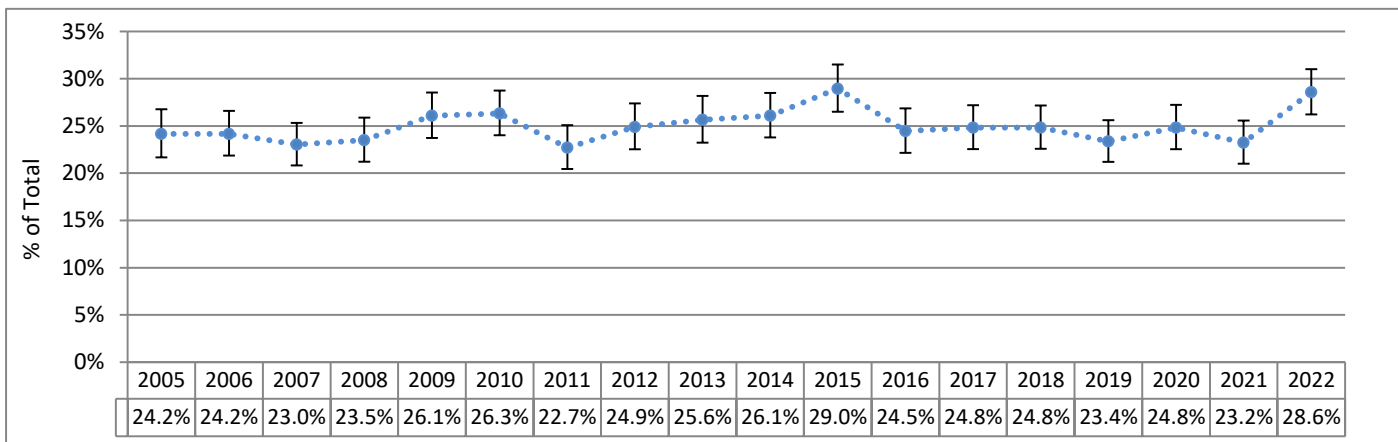
Distribution of TSV Primary C-Section Rates  
2022 Births at WA Non-Military Hospitals



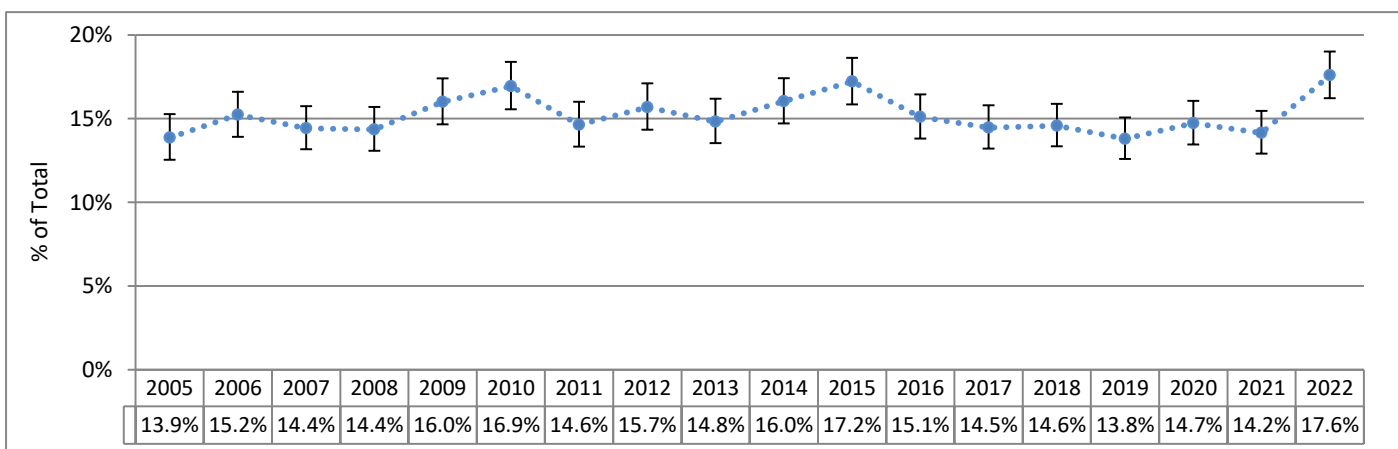
This hospital's 2022 Primary C-Section rate of 17.6% was higher than the statewide rate of 16.4% .

# St Joseph Medical Center

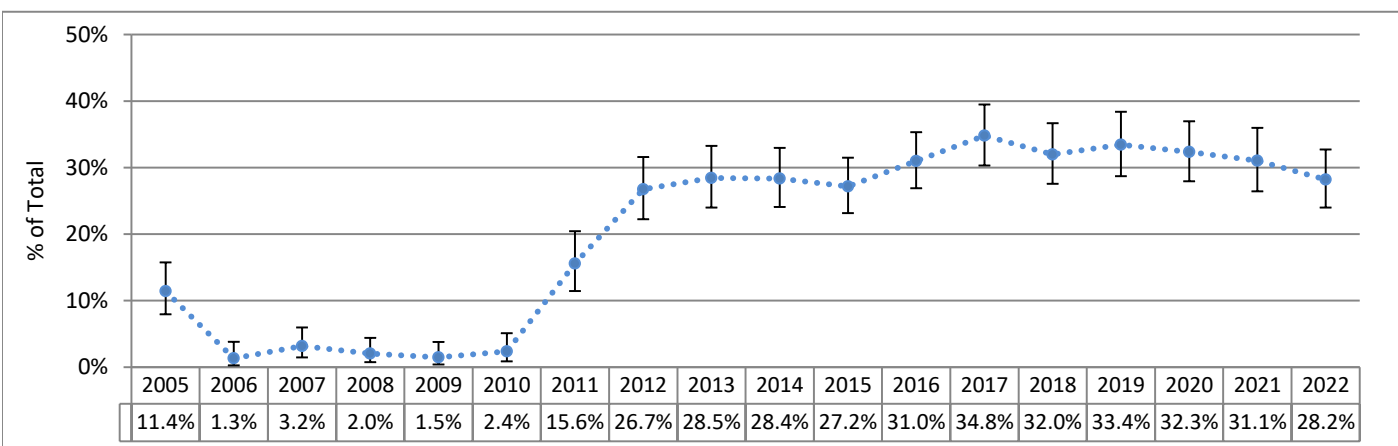
**C-Sections Among Nulliparous Term Singleton Vertex (NTSV) Deliveries 2005 - 2022**  
Hospital Rate with 95% Confidence Limits



**Primary C-Sections Among Term Singleton Vertex (TSV) Deliveries 2005 - 2022**  
Hospital Rate with 95% Confidence Limits



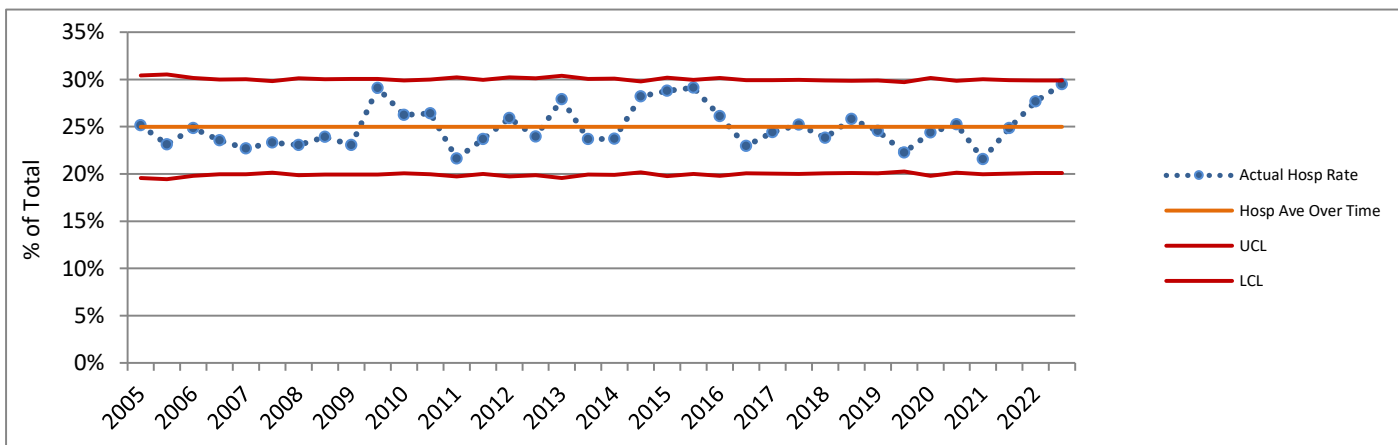
**Vaginal Birth After Cesarean Among Term Singleton Vertex (TSV) Deliveries 2005 - 2022**  
Hospital Rate with 95% Confidence Limits



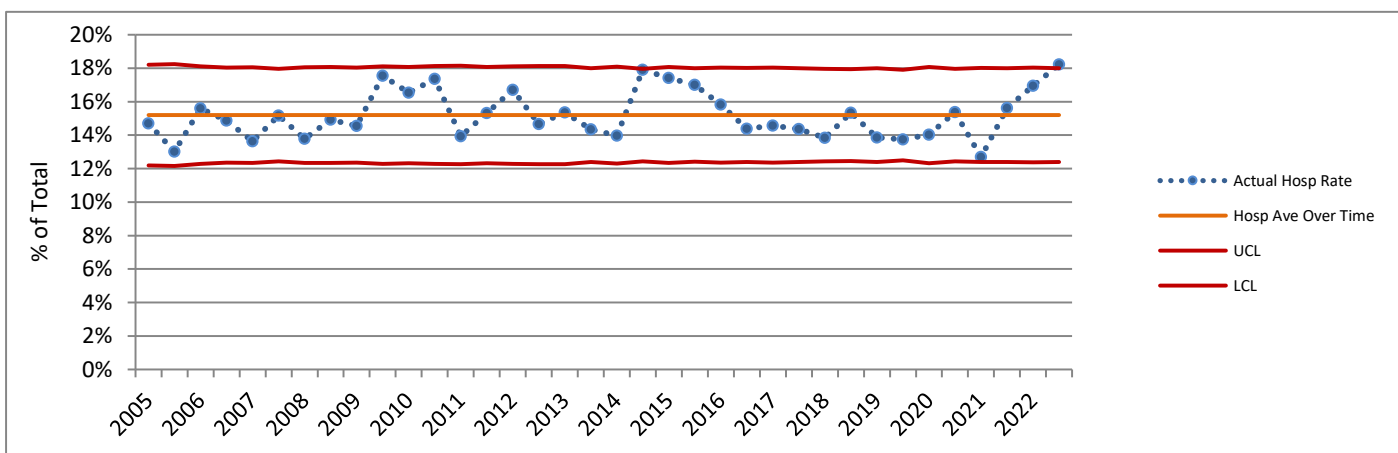
95% Confidence Limits show the range within which a data point could reasonably be the result of random variation. Points outside of this range are considered to differ significantly from the point for which the confidence limit is calculated, since there is only a 5% chance that the difference is due to random variability.

# St Joseph Medical Center

**C-Sections Among Nulliparous Term Singleton Vertex (NTSV) Deliveries 2005 - 2022 (Six-Month Intervals)**  
**Actual Hospital Rate Compared to Hospital Average Across Time**



**Primary C-Sections Among Term Singleton Vertex (TSV) Deliveries 2005 - 2022 (Six-Month Intervals)**  
**Actual Hospital Rate Compared to Hospital Average Across Time**



Charts based on the Hospital average over time are not presented where the Hospital number of deliveries for any six-month period did not meet the standard recommended size for upper (UCL) and lower (LCL) control lines based on 3 standard deviations. Rates above or below the red lines show a greater difference from the average than do those between the red lines.

**DATA SOURCES AND DEFINITIONS:** Certificates for live births and fetal deaths were provided by the DOH Center for Health Statistics and included in the First Steps Database. Medicaid status was determined by individual-level linkage to Medicaid claims/encounters and eligibility data performed by the First Steps Database Team. Years refer to calendar years.

**Excludes** births outside of hospitals, in military facilities, and in facilities that do not typically perform deliveries. C-Section measures exclude cases where the birthing parent was transferred to higher level care for medical or fetal indicators for delivery and births where intended place of birth was other than hospital.

\*\* = Rate not shown due to small numbers.

**Perinatal Level of Care designation** is as of 2022 for all years shown. **Total Deliveries** includes live births and fetal deaths after 20 weeks' gestation.

**Medicaid** refers to births to individuals with Medicaid-paid pregnancy care claims/encounters or individuals who were enrolled in a state-contracted capitated managed care plan for at least three of the last six months before delivery. **Distribution charts** are based on non-military hospitals with at least 20 denominator deliveries. **C-Sections (NTSV)** is the percent of Cesarean sections among nulliparous, term, singleton, liveborn, vertex deliveries. **Term** is defined as gestational age of at least 37 completed weeks. For reports as of November 2015, the gestational age used for term designation is based on obstetric estimate of gestation. **Vaginal Births After Cesarean (VBAC)** is the percent of vaginal births among live births to appropriate candidates.

Individuals whose pregnancies were at term, had a single fetus with vertex presentation, and who had one prior C-section were considered **appropriate candidates for VBAC**. Number of prior C-sections is determined by Birth Certificate number reported and by longitudinal linkage. **Primary C-Sections** is the percent of Cesarean sections among term, singleton, liveborn, vertex deliveries to individuals with no prior C-sections.