

HCA directions, visitor parking, and check-in instructions

HCA buildings

- **Cherry Street Plaza**
626 8th Avenue SE, Olympia, WA 98501
- **Townsquare Buildings 1 and 2**
621 8th Avenue SE, Olympia, WA 98501
- **Townsquare Building 6**
805 Plum Street SE, Olympia, WA 98501

Directions

1-5 Southbound—Take Exit 105B Port of Olympia:

- Continue through the first light; you are now on Plum Street SE.
- Go two more lights to 8th Avenue SE and turn left.
- Take the first right onto Chestnut Street SE. Turn right into the second driveway at HCA's lot (12 visitor slots along the south side), or park in metered spots on the street.

I-5 Northbound—Take Exit 105 State Capitol/City Center/Port of Olympia:

- Keep right (Port of Olympia) as lanes split. Remain right through the roundabout onto Henderson Boulevard SE (you will pass beneath I-5).
- Continue to the light and turn left onto Plum Street SE.
- Go two more lights to 8th Avenue SE and turn left.
- Take the first right onto Chestnut Street SE. Turn right into the second driveway at HCA's lot (12 visitor slots along the south side), or park in metered spots on the street.

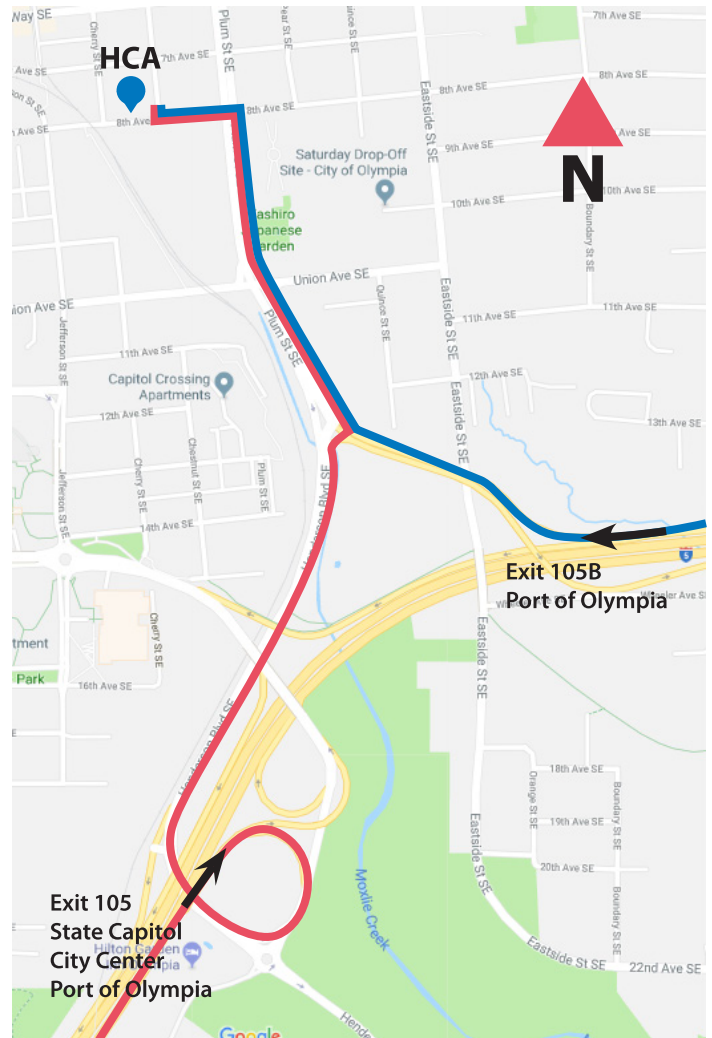
Transit routes

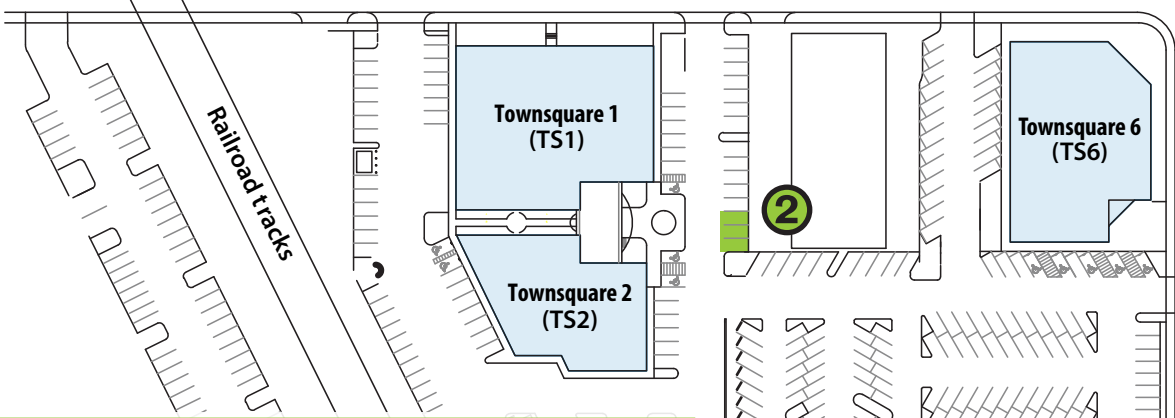
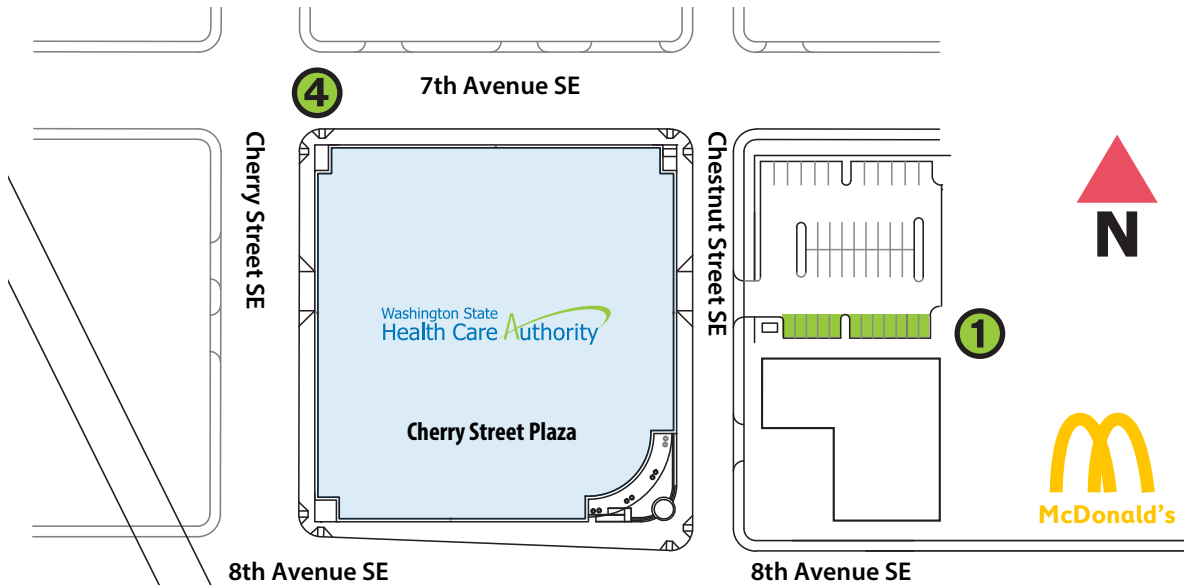
Intercity Transit routes 60 and 64 stop directly in front of HCA, while routes 94, 603, and 612 stop within a few blocks of the agency. For more rider and route information, visit www.intercitytransit.com.

Visitor parking and check-in

All visitors must check in with HCA Reception (360-725-1000) in the first-floor lobby of Cherry Street Plaza. To expedite your check-in, we recommend you have the first and last name of the person you are here to see, and the subject of the meeting you are here to attend.

See the parking map detail on the reverse side of this page for visitor parking locations.





Visitor parking locations

- 1** The parking lot at 7th Avenue SE and Chestnut street—Twelve marked slots along the south side, against the garage wall (all-day parking, no permit required).
- 2** The parking lot in front of Townsquare 1 and 2—Three marked slots across from the building entrance (two-hour limit, no permit required).
- 3** The “triangle” parking lot off Union Avenue SE, across the railroad tracks—Any spot in this lot (all-day parking, PERMIT REQUIRED from HCA Reception).
- 4** Any metered parking spots on the street (coin operated)—Free for the first 15 minutes (push button required), or free all day with disabled plates or disabled parking placard.

