

Trueblood Implementation Update

May 2023



Trueblood Contempt Settlement

The Contempt Settlement Agreement outlines an array of services intended to better deliver the right care, at the right time, to the right people and reduce the number of people who become or remain class members.

Washington state is in Phase 2 of implementation, which covers the King region, and has recently proposed the Thurston, Mason, and Salish regions for Phase 3.

Phased Approach

Trueblood Settlement Agreement Regions

Phase 1: 2019-2021

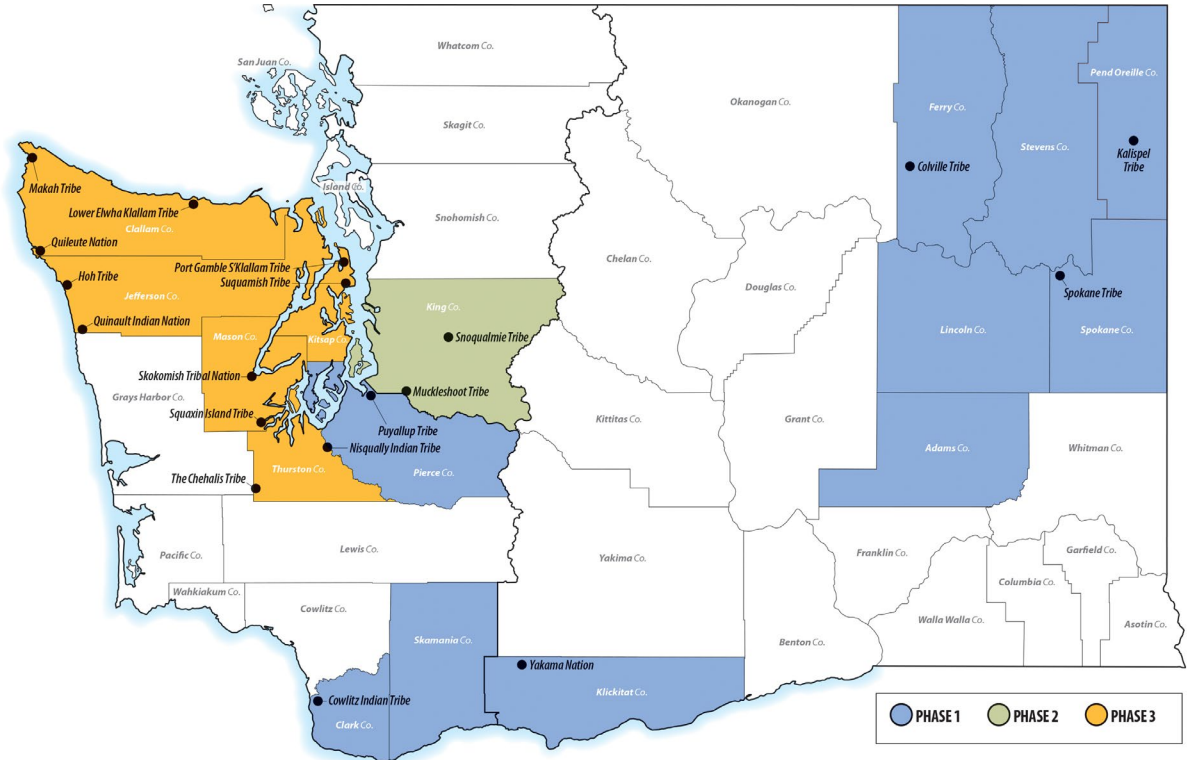
- Southwest region (Clark, Klickitat and Skamania counties)
- Pierce County
- Spokane region (Adams, Ferry, Lincoln, Pend Oreille, Spokane and Stevens counties)

Phase 2: 2021-2023

- King County – Washington’s most populous

Phase 3: 2023-2025

- Proposed counties: Thurston, Mason, Kitsap, Jefferson, and Clallam.



Forensic Mental Health System Overview

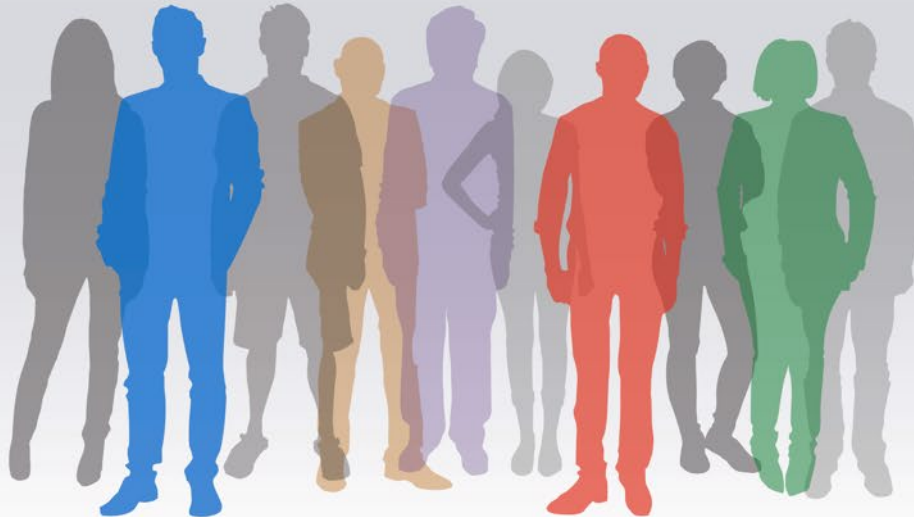
Forensic Navigators help guide, support and advocate for their participants as they undergo competency evaluations, competency restoration services and transition back into the community, offering coordinated transitions and warm handoffs to community resources.

Enhanced Peer Services are integrated into OCRP, FHARPS and FPATH to provide continuing education and specialized training to certified peer counselors who support peers who are forensically involved.

Forensic Housing and Recovery through Peer Services focus on helping participants overcome barriers to find and maintain housing. Staffed by people with lived behavioral health experiences, FHARPS teams foster engagement with participants who are referred by forensic navigators or FPATH.

Forensic Projects for Assistance in Transition from Homelessness offers targeted outreach and case management services for people who have been identified as likely to be referred to an additional competency evaluation in the next six months. The goal of the program is to connect people to behavioral health and mainstream community supports in hopes of preventing them from further involvement in the criminal court system.

The **Outpatient Competency Restoration Program** offers outpatient competency restoration when courts deem a person appropriate for community-based rather than inpatient services. OCRP is provided by contracted behavioral health agencies and includes psychoeducational interventions, assessments, medication management and requests for competency reevaluation.



Forensic Navigators

The primary goal of the program is to assist people who have been referred for competency evaluation. Forensic navigators help guide, support and advocate for their clients as they undergo competency services or transition into the community. Forensic navigators serve as officers of the courts, interim case managers, and community liaisons who help clients while they are involved with the criminal court system. They also offer coordinated transitions and warm handoffs to suitable community resources.

Forensic Navigators *Continued*

As of : 04/28/23

Total cases worked: 6,286

People discharged: 5,861

People active: 408

Average caseloads:

- Overall: 24
- Pierce: 12
- Southwest: 26
- Spokane: 20
- King: 33

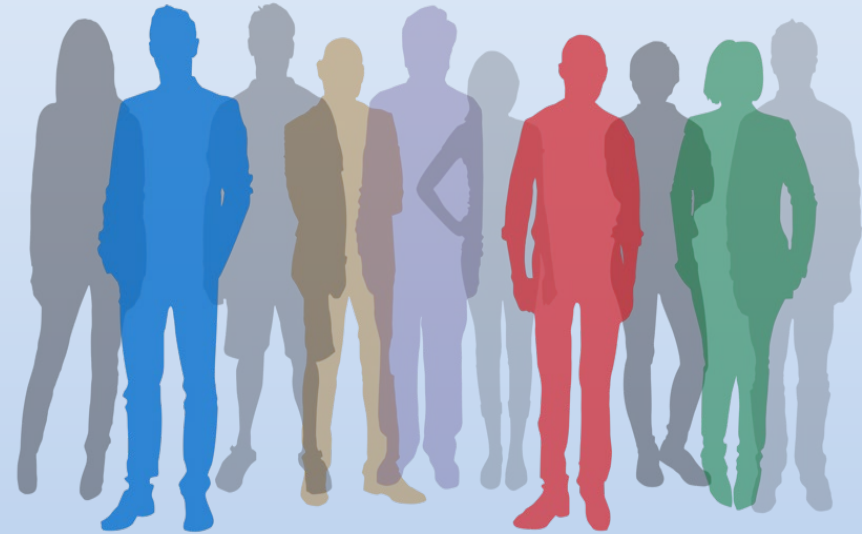
Highest caseload to date: 52 (King)

Note: People may be counted more than once. Numbers in this slide will not align with SAR data due to different timelines and counting rules.

Enhanced Peer Support

The Enhanced Peer Support continuing education program provides training on the intersection between behavioral health and the criminal court system to Washington certified peer counselors.

- All online trainings offered by the Enhanced Peer Support (EPS) program are hosted on an online learning management system. They are built using advanced e-learning software, coordinating content narration, and ensuring accessibility for all users.
- “The Intersection of Behavioral Health and the Law” and the diversity, equity, and inclusion training, “Enhancing Your Cultural Intelligence,” are available to learners online. Trainings are underway to prepare facilitators to offer these trainings in person.
- The EPS program offers peer support and behavioral health recovery technical assistance to DSHS/BHA, HCA, Forensic PATH, Forensic HARPS, Outpatient Competency Restoration teams, and statewide partners.



Outpatient Competency Restoration



OCRCP is a community-based competency restoration service that criminal courts can order as an alternative to facility-based competency restoration. OCRCP includes assessment of barriers to competency, psychoeducational programming, medication management, competency evaluation and referral to other supports (i.e., behavioral health services, residential supports) as needed.

- Residential Treatment Facility (RTF) to OCRCP project proposal went live on July 5, 2022.
- Phase 2 services went live on October 31, 2022.

Outpatient Competency Restoration Continued



- Phase 2 OCRP providers' temporary capacity has been lifted; courts can engage with forensic navigators to obtain information about the program's ability to accept people into the program.
- Outreach and education to courts and other interested stakeholders in Phase 1 and Phase 2 regions continue.
- Health Care Authority has begun outreach in the recommended Phase 3 regions to discuss the possibility of contracting for OCRP services in Phase 3.

Forensic HARPS (FHARPS)



Forensic Housing and Recovery through Peer Services teams are staffed with people who have lived experience of journeys in and through recovery. They provide supportive housing services and short-term housing subsidies.

- FHARPS providers continue to work creatively with eligible participants to engage people at crucial intercept points in the forensic and criminal court systems, enroll and house people who would like voucher and/or housing supports, and keep participants engaged in the longer process of identifying necessary resources and longer-term housing.



- Phase 1: Comprehensive Life Resources took over funding for a second team and is continuing to hire additional staff to support eligible people in the Pierce region. The agency also continues to operate a significant number of properties through master leasing.
- Phase 2: HCA is working with the FHARPS provider in Phase 2 to add hiring and retention bonuses for staff in an attempt to overcome some of the workforce challenges present in the region.



This was written on a note received by the FHARPS program director in the King region, from a person enrolled in the program:

“While at Clark County Jail a participant was referred to FHARPS. The participant and FHARPS Certified Peer Counselor began collaborating to develop a housing plan. Once the person was released, they were immediately housed in a local hotel to give both participant and peer time to collaborate with other community partners. During their stay in the hotel, this participant began a new life journey by getting enrolled and shortly thereafter, attending beauty school full time. They are currently stably housed within the OCRP triplex. The person is currently utilizing all opportunities provided through community services to the fullest while continuing to further their education with the hope and dream of being a beautician full time once they graduate in the fall of 2023.”

Crisis Housing Vouchers

In many counties in Washington, law enforcement can take people to emergency departments (EDs), crisis stabilization facilities (CSFs), or jails. Those entering CSFs in Phase 1 regions are eligible for crisis housing vouchers. Crisis housing vouchers provide short-term funding to purchase housing interventions. Crisis housing vouchers in the Phase 2 region are distributed via outpatient outreach and hourly crisis teams.

- Phase 2: King County reported vouchers are available through the following programs:
 - Downtown Emergency Services Center's (DESC) Community Outreach and Advocacy Team (COAT) program;
 - Navos' Adult Crisis Services; and
 - Valley Cities' Adult Crisis Services and Assisted Outpatient Services teams.
 - DESC COAT and Valley Cities Assisted Outpatient Services were the first programs to utilize the vouchers and King County BHASO held support meetings with each of the subcontracted providers to identify more ways to support the teams in utilizing this resource beginning in January 2023.
- Phase 1: In Phase 1 regions, HCA has continued to monitor the utilization of vouchers for any possible need of additional funding in 2023 and Lifeline's crisis stabilization facility will require an amendment to add funds.

Forensic Projects for the Assistance in Transitions from Homelessness is an assertive outreach and engagement program for people who have had two or more competency evaluations in the past 24 months. Forensic PATH teams provide intensive case management services to help people achieve identified goals and transition into longer-term outpatient behavioral health services.

- The FPATH Program Manager position is open for recruitment.
- Forensic PATH teams in Phase 2 teams have reported that forensic navigators provide most of their referrals, allowing FPATH teams to more immediately identify and engage with people who are eligible for the program.
- Forensic PATH held its second annual meeting on March 23 and 24 in Tukwila. This meeting was the first in-person event for all people working on Forensic PATH teams.

The Southwest team engaged and enrolled a FPATH eligible person while they were in jail. They began working with the person on setting goals, which included engaging in drug court, obtaining a bus pass, regaining possession of their bicycle, and eventually reinstating their CDL license.

With successful completion of all these goals, the person was able to attend court appointments in a timely manner, find a counselor to perform the required assessment to regain their CDL license and obtain a part-time job. The team was also successful in being granted an extension for housing funding because the person is engaging exceptionally well in the program. The team states: "This amazing individual has been clean and sober now for a few months and we are working on getting awarded social security for them and finally seeking to move them into an apartment of their own."

King Crisis Bed Capacity

The state will increase crisis stabilization/triage facilities in King County by adding two 16-bed facilities.

- Construction of the first facility in the King region was delayed due to the contractor identifying a \$1.6 million budget gap. DSHS, HCA, Department of Commerce, and RI International collaborated on options to alleviate the gap and funding appears to have been obtained through the governor's proposed budget.
- ConnectionsWA continues to work closely with state partners and has executed its contract for the second 16-bed facility in the King region.

Crisis Services Enhancements

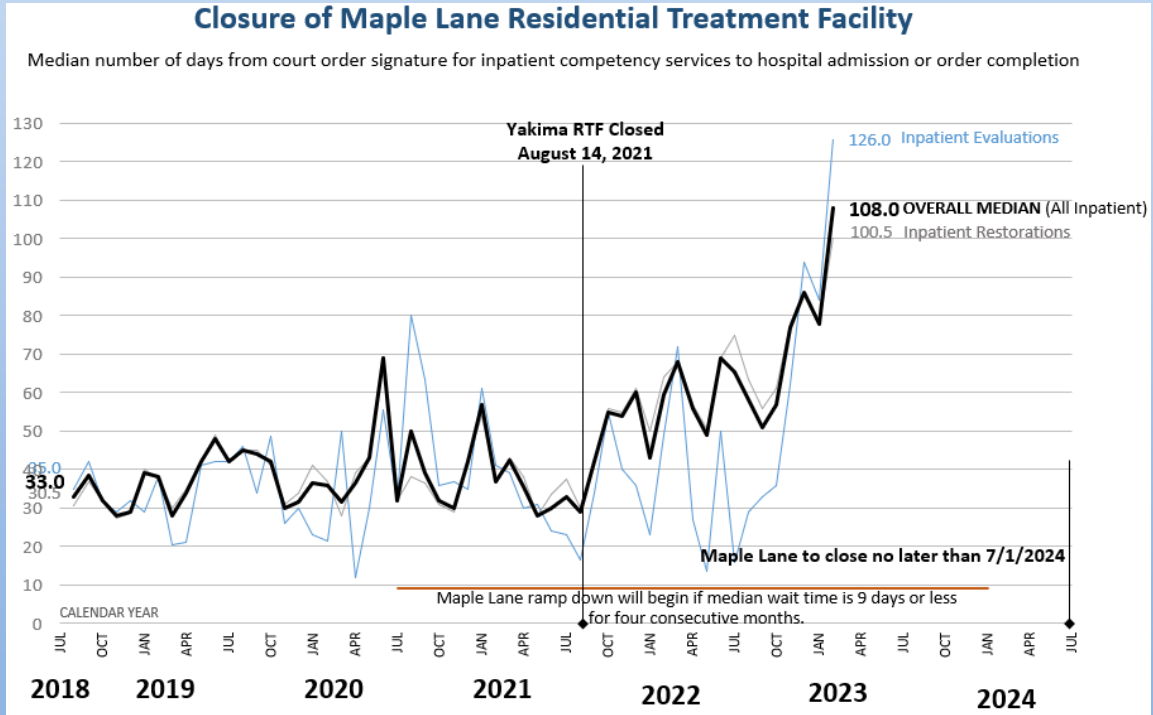
The state will provide funds for enhancing existing crisis stabilization services and facilities in the phased Trueblood regions to provide support for people experiencing a behavioral health crisis. These facilities will be designated to accept diversions from law enforcement for people whose behavior can be better managed and addressed in a therapeutic environment and does not rise to the level of arrest or incarceration.

- Phase 1: PHS has reported staffing challenges for floor staff, mental health clinicians, and administrative staff. The SCRBH (ASO) is diligently working with PHS to address these concerns to ensure the appropriate program staffing levels can be maintained as this program progresses. Prospects and strategies include collaborating with universities and dual-licensure staff to increase hiring and retention opportunities.
- Phase 2: King County BHASO continue to report crisis enhancements aid DESC staff to more efficiently reunite guests to communities with natural supports, help provide medication, help with medical copays, and supplement costs during guest-moves.



Ramp Down of Maple Lane

Maple Lane RTF will begin ramp down when class member wait times for inpatient competency services reaches a median of nine days or fewer for four consecutive months, based on mature data, or no later than July 1, 2024.



DATA SOURCE: BHA Forensic Data System; August 2018 through February 2023.

MEASURE DEFINITION: The median wait time represents the number of days from the beginning of a period of waiting in jail for competency services to order completion among orders completed in the specified month. Includes all inpatient competency evaluation or restoration orders for individuals waiting for services in jail. The order is completed when the individual is admitted for inpatient services, or when the order is dismissed, withdrawn or when the individual is physically released from jail (e.g. on personal recognizance or work release). Includes admissions to WSH, ESH, Maple Lane and Yakima Residential Treatment Facilities (until 7/26/2021, when the last patient was discharged from Yakima, with final facility closure on 8/14/2021).

Crisis Intervention Training

The Washington State Criminal Justice Training Commission provides Crisis Intervention Training (CIT) for the Trueblood regions. The eight-hour CIT class for dispatchers is a four-hour self-paced, online course plus a four-hour live webinar training. The eight-hour CIT class for corrections officers is an online platform and made available to all corrections officers across the state. CJTC continues to offer the 40-hour CIT course to peace officers for each agency in the phased regions.

- 40-hour CIT training for law enforcement officers is available.
 - As of June 30, 2022, Phase 1 agencies met and/or exceeded the Phase 1 requirements. The Spokane Region held a maintenance class in November.
 - Trainings scheduled for Phase 2 began in July 2022. Seven trainings are completed and six are scheduled through June 2023. Fewer than nine officers remain to be trained in this region to meet the target.



Crisis Intervention Training *Continued*

- 8-hour CIT for corrections is available for corrections officers.
 - The CIT 8-hour correction officer course completed 20 classes between July 1, 2022, and December 31, 2022.
- 8-hour CIT for 911 dispatchers.
 - This hybrid online/webinar training is ongoing in all areas of the state with 100% compliance in Phase 1, and 90% compliance in Phase 2.

Note: Numbers in this slide will not align with SAR data due to different timelines and counting rules.



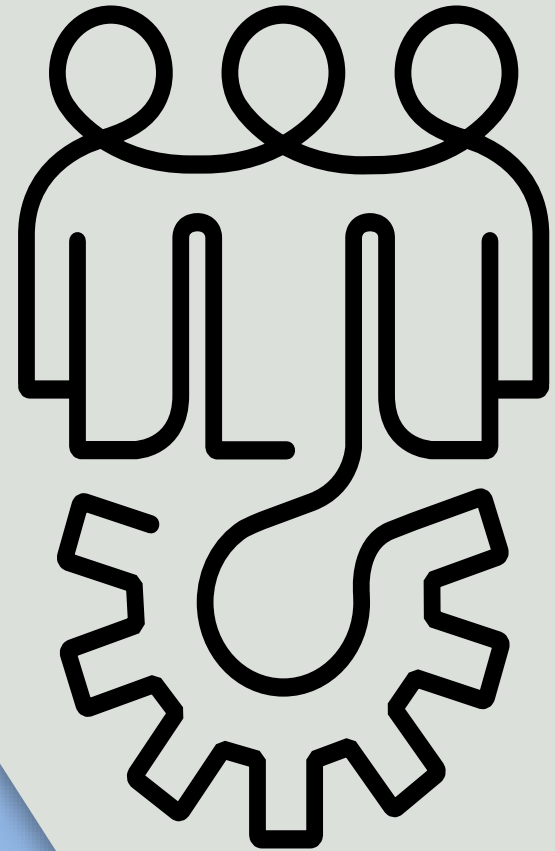
DSHS' Jail Technical Assistance program provides training and information to jails across the state to support jail staff in working effectively with persons who live with mental illness.

Services include:

- Monthly online learning events that are available to all city, county and Tribal jails statewide.
- Inviting jail staff to submit questions or requests via our JTA mailbox at jailassistance@dshs.wa.gov.
- Maintaining a website www.dshs.wa.gov/bha/office-forensic-mental-health-services/jail-technical-assistance-program with information and resources related to jail technical assistance, including past presentations.

DSHS continues to provide support for jail-based competency evaluations to be completed via video conferencing.

Twenty-four jails (including county, city and tribal jails) are now using video conferencing to complete an average of 210 competency evaluations per month. This contributes directly to improving the timeliness of jail-based competency evaluations.



Workforce Development

For the Trueblood Contempt Settlement Agreement to be successful, our state must cultivate a very specialized kind of workforce that includes social work, psychology, psychiatry, nursing, law enforcement, housing and other professionals to work together at what we call “The Intersection of Behavioral Health and the Law.” The DSHS Workforce Development program is charged with studying the needs for this specialized workforce and helping to develop strategies that promote an adequate and skilled workforce.

During the date range this report covers, the Workforce Development team has:

- Finalized and released the collaboratively developed *Overview of Washington State’s Adult Forensic Mental Health System* online training series. This five-module training series is focused on the Trueblood lawsuit, competency to stand trial, diversion, competency restoration and continuity of care. The training is now available at no cost to all jails statewide, educational partners, behavioral health organizations statewide, inpatient treatment settings, and any other interested parties.
- Implemented a new onboarding manual that supports OFMHS in consistently following policies regarding recruitment, hiring, and onboarding of new staff.
- Continued to gather information from Phase 2 partners in the King region to identify specific workforce strengths and challenges.
- Provided support for effective use and expansion of telehealth services for forensic evaluations.



For more information about Trueblood vs. DSHS, access to Court Monitor monthly reports, and one-pagers that describe the programs and services of Trueblood in more detail, please go to:

www.dshs.wa.gov/bha/trueblood-et-al-v-washington-state-dshs

To join the Trueblood listserv, please email truebloodtaskforce@dshs.wa.gov