

# Delivery Statistics Report (2022 Births) Washington State Non-Military Hospitals

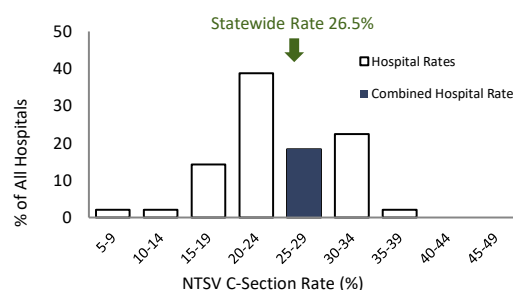
## Deliveries and Medicaid Status

	2020	2021	2022	3-year TOTAL	Net Change '21 to '22
Total Deliveries for Non-Military Hospitals	75,766	77,372	76,783	229,921	-589
Deliveries with Medicaid-paid Pregnancy Care	35,658	35,239	35,906	106,803	667
Percent of Deliveries with Medicaid-paid Pregnancy Care	47%	46%	47%	46%	1%

## C-Sections Among Nulliparous Term Singleton Vertex (NTSV) Deliveries

Distribution of NTSV C-Section Rates  
2021 Births at WA Non-Military Hospitals

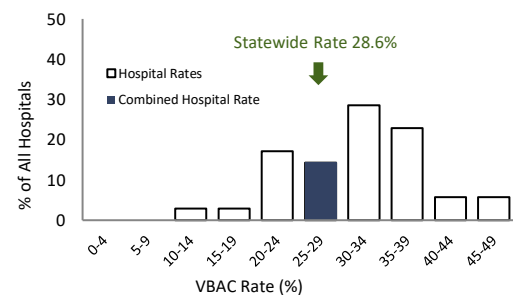
	2020	2021	2022	Net Change '21 to '22	3-year
NTSV Deliveries	24,783	24,294	24,560	266	73,637
<b>NTSV C-Section Rates</b>					
WA Non-Military Hospitals	24.9%	25.5%	26.5%	1.1%	25.6%
Level 1 Hospitals	22.4%	23.9%	23.5%	-0.5%	23.3%
Level 2 Hospitals	23.9%	23.8%	25.0%	1.3%	24.2%
Level 3 Hospitals	25.1%	26.3%	27.3%	1.0%	26.2%
Level 4 Hospitals	27.3%	27.0%	29.2%	2.2%	27.8%



## Vaginal Births After Cesarean for Term Singleton Vertex Deliveries

Distribution of VBAC Rates  
2021 Births at WA Non-Military Hospitals

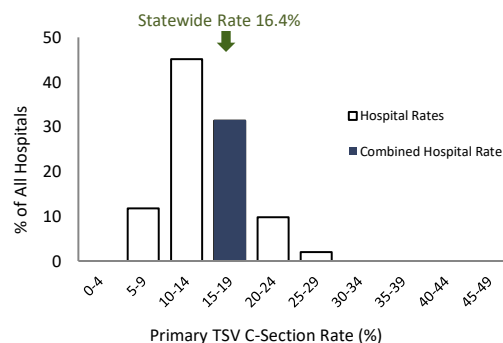
	2020	2021	2022	Net Change '21 to '22	3-year
Deliveries Post-C-Sec	7,145	7,128	7,169	41	21,442
<b>VBAC Rates</b>					
WA Non-Military Hospitals	27.4%	27.7%	28.6%	0.9%	27.9%
Level 1 Hospitals	28.1%	21.8%	26.1%	4.3%	25.4%
Level 2 Hospitals	28.0%	30.2%	32.8%	2.6%	30.4%
Level 3 Hospitals	27.7%	28.6%	28.2%	-0.4%	28.2%
Level 4 Hospitals	25.5%	25.4%	24.5%	-0.9%	25.1%



## Primary C-Sections Among Term Singleton Vertex (TSV) Deliveries

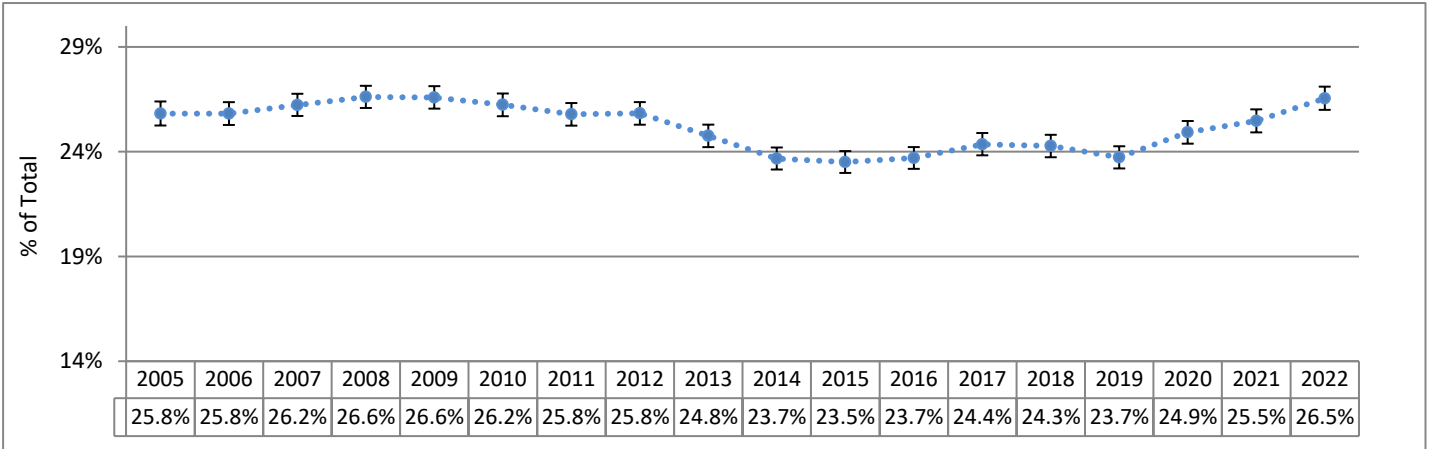
Distribution of TSV Primary C-Section Rates  
2021 Births at WA Non-Military Hospitals

	2020	2021	2022	Net Change '21 to '22	3-year
TSV Deliveries/No Prior C	54,202	53,604	53,500	-104	161,306
<b>Primary C-Section Rates</b>					
WA Non-Military Hospitals	15.0%	15.5%	16.4%	0.9%	15.7%
Level 1 Hospitals	12.4%	13.5%	13.3%	-0.3%	13.1%
Level 2 Hospitals	14.2%	14.4%	15.0%	0.6%	14.5%
Level 3 Hospitals	15.1%	16.1%	17.4%	1.2%	16.2%
Level 4 Hospitals	18.3%	17.7%	19.1%	1.4%	18.4%

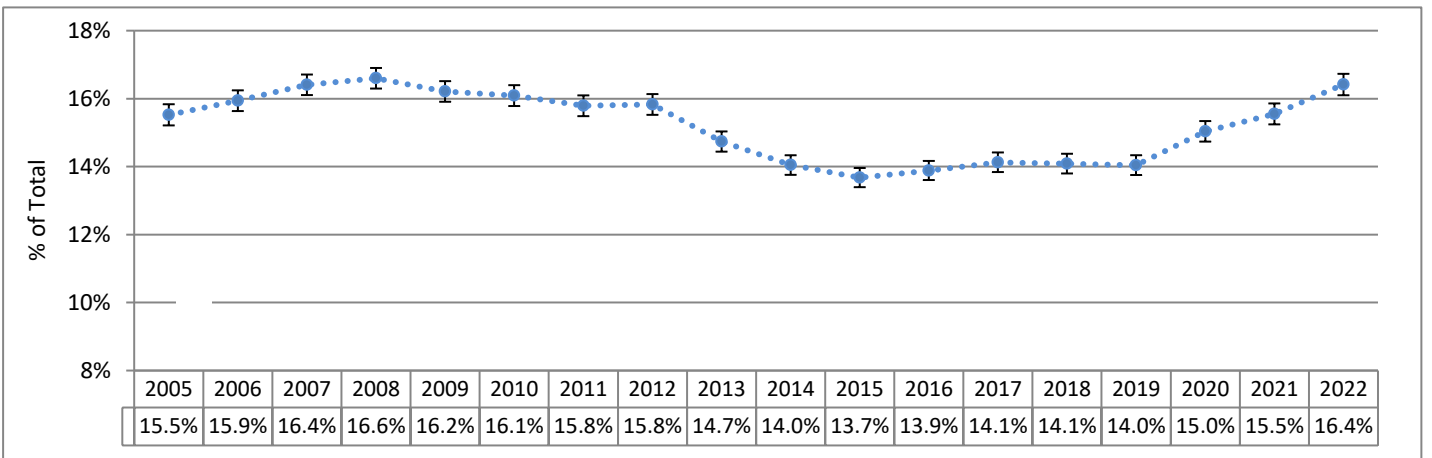


# Washington State Non-Military Hospitals

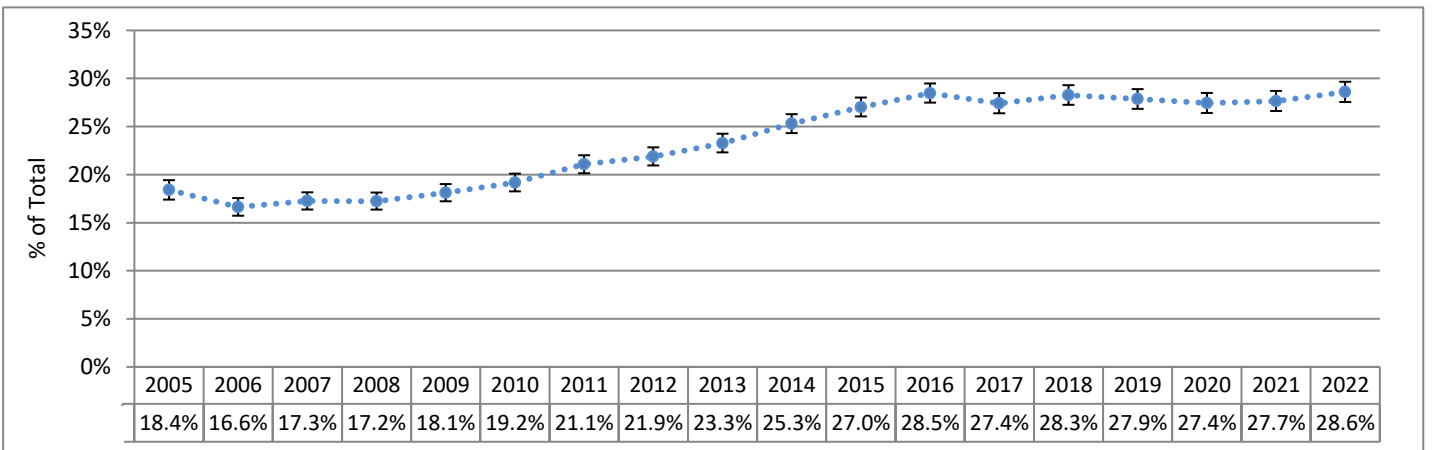
**C-Sections Among Nulliparous Term Singleton Vertex (NTSV) Deliveries 2004 - 2021**  
Hospital Rate with 95% Confidence Limits



**Primary C-Sections Among Term Singleton Vertex (TSV) Deliveries 2004 - 2021**  
Hospital Rate with 95% Confidence Limits



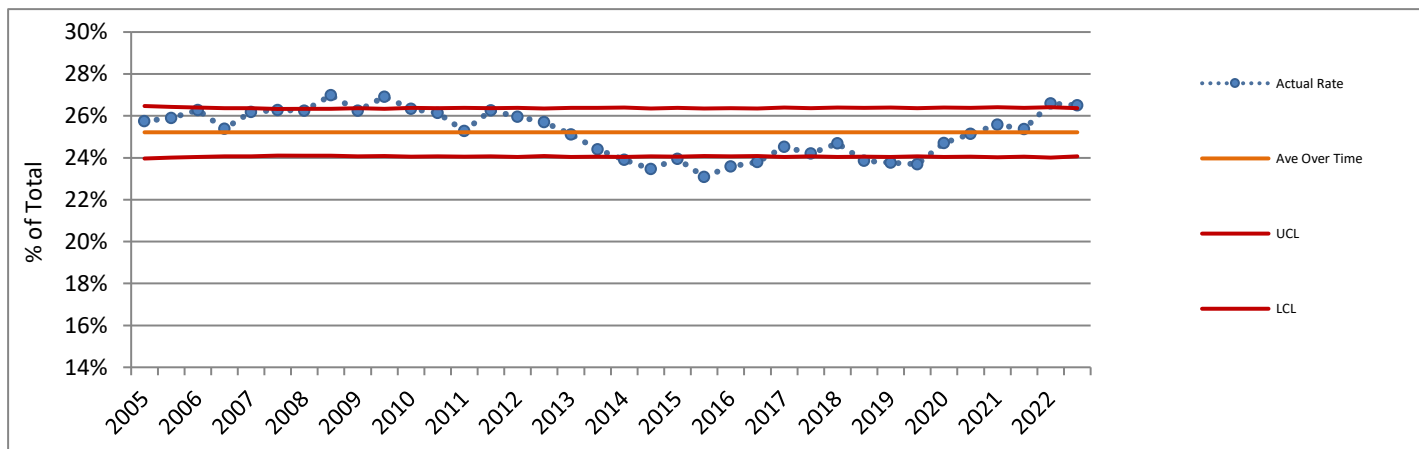
**Vaginal Birth After Cesarean Among Term Singleton Vertex (TSV) Deliveries 2004 - 2021**  
Hospital Rate with 95% Confidence Limits



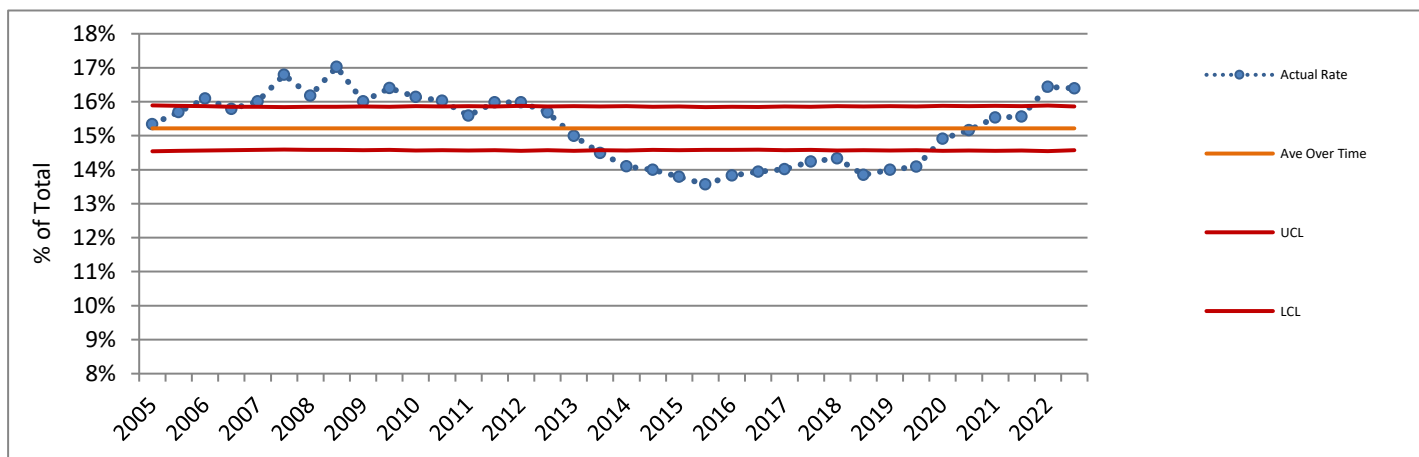
95% Confidence Limits show the range within which a data point could reasonably be the result of random variation. Points outside of this range are considered to differ significantly from the point for which the confidence limit is calculated, since there is only a 5% chance that the difference is due to random variability.

## Washington State Non-Military Hospitals

**C-Sections Among Nulliparous Term Singleton Vertex (NTSV) Deliveries 2004 - 2021 (Six-Month Intervals)**  
**Actual Hospital Rate Compared to Hospital Average Across Time**



**Primary C-Sections Among Term Singleton Vertex (TSV) Deliveries 2004 - 2021 (Six-Month Intervals)**  
**Actual Hospital Rate Compared to Hospital Average Across Time**



Charts based on the Hospital average over time are not presented where the Hospital number of deliveries for any six-month period did not meet the standard recommended size for upper (UCL) and lower (LCL) control lines based on 3 standard deviations. Rates above or below the red lines show a greater difference from the average than do those between the red lines.

**DATA SOURCES AND DEFINITIONS:** Certificates for live births and fetal deaths were provided by the DOH Center for Health Statistics and included in the First Steps Database. Medicaid status was determined by individual-level linkage to Medicaid claims and eligibility performed by the First Steps Database team. Years refer to calendar years.

**Excludes** births outside of hospitals, in military facilities, and in facilities that do not typically perform deliveries. C-Section measures exclude cases where the birthing parent was transferred to higher level care for medical or fetal indicators for delivery and births where intended place of birth was other than hospital.

**Distribution charts** are based on non-military hospitals with at least 20 denominator deliveries. **Perinatal Level of Care designation** is as of 2022 for all years shown. **Total Deliveries** includes live births and fetal deaths after 20 weeks' gestation. **Medicaid** refers to births to individuals with Medicaid-paid pregnancy care claims/encounters or individuals who were enrolled in a state-contracted capitated managed care plan for at least three of the last six months before delivery. **C-Sections (NTSV)** is the percent of Cesarean sections among nulliparous, term, singleton, liveborn, vertex deliveries. **Term** is defined as gestational age of at least 37 completed weeks. For reports as of November 2015, the gestational age used for term designation is based on obstetric estimate of gestation. **Vaginal Births After Cesarean (VBAC)** is the percent of vaginal births among live births to appropriate candidates. Individuals whose pregnancies were at term, had a single fetus with vertex presentation, and who had one prior C-section were considered **appropriate candidates for VBAC**. Number of prior C-sections is determined by Birth Certificate number reported and by longitudinal linkage. **Primary C-Sections** is the percent of Cesarean sections among term, singleton, liveborn, vertex deliveries to individuals with no prior C-sections.