

Welcome!



Welcome from HCA's IECMH team



Christine Cole, LCSW, IMH-E®

Infant & Early Childhood Mental Health Program Manager
Clinical Quality Care Transformation
Christine.Cole@hca.wa.gov



Kimberly "Kiki" Fabian, M.Ed.

Infant-Early Childhood Mental Health Analyst
Division of Behavioral Health and Recovery
Kiki.Fabian@hca.wa.gov

What does the HCA IECMH team do?



Implement and support policies for Apple Health IECMH services



Manage contracts and programs that support the IECMH field



Partner with sister agencies and organizations on IECMH projects

What to expect

Goal & Objectives

- ▶ **Goal:** Increase access to quality IECMH services for the birth – 5 population enrolled in Apple Health
 - ▶ **Objective 1:** Increase HCA’s understanding the current state of offering IECMH services across Washington.
 - ▶ **Objective 2:** Identify gaps and potential solutions for supporting the behavioral health workforce in offering quality IECMH services
 - ▶ **Objective 3:** Foster connection between providers to share lessons learned and create opportunities for collaboration in meeting the needs of the B-5 population

Structure

Group discussions & activity with 3 focus areas:

- General information about why & how birth – 5 services are provided at your agency

Providing IECMH Services



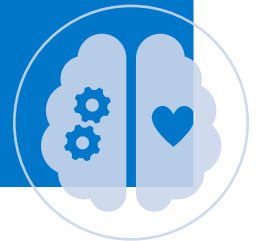
- Differences or best practices for billing & contracting for B-5 services

Billing & Contracting



- Diving deeper into what implementation looks like & where you are experiencing challenges

Mental Health Assessment for Young Children



Group Discussions

- ▶ Guiding questions will be on the screen
 - ▶ Questions are provided to start the discussion, though conversation may include broader topics
- ▶ At the end of discussions, we will share a link to an online response sheet, and there will be time to record any additional information you'd like to share.

Written responses



- ▶ Share specifics about your organization; the more details the better!
 - ▶ What does/did the process look like
 - ▶ What are your policies
 - ▶ Who is/was involved
 - ▶ What are your best practices
- ▶ Highlight your successes; feel free to brag!
- ▶ What are the new questions or considerations you are taking from the discussion?

MHAYC Sticky Note Activity

- ▶ Virtual 'poster boards' will have specific topics listed:
 - ▶ Coordination with other partners
 - ▶ Structure of intake assessments
 - ▶ Screening and assessment tools
 - ▶ Clinical documentation and electronic health records
 - ▶ Caregiver engagement
 - ▶ Travel to home and community settings
- ▶ Everyone will be invited to add sticky notes to the poster boards that describe their policies/procedures, best practices, and/or challenges.
- ▶ After a break, we will dive deeper during a group discussion.

Closing Reflections

- ▶ We will end the day with time to share thoughts
 - ▶ **Reflection form:** online form to share your reflections
 - ▶ **Share outs:** We will be inviting participants to share something that stuck with them from the day
- ▶ We will share ways to **stay informed** about IECMH work at HCA before transitioning to Community Networking

And last but not least, a raffle giveaway!

Consent to Participate

▶ Information we are collecting:

- ▶ Participant information: name, role, organization, and contact info
- ▶ Your response and reflection sheets do not need to include identifying information

▶ How will this be used:

- ▶ To follow-up with you after the Listening Session
- ▶ To inform our Provider Listening Session report
 - You will have the chance to review this report before it is published
 - No identifying information will be included in this report

Background

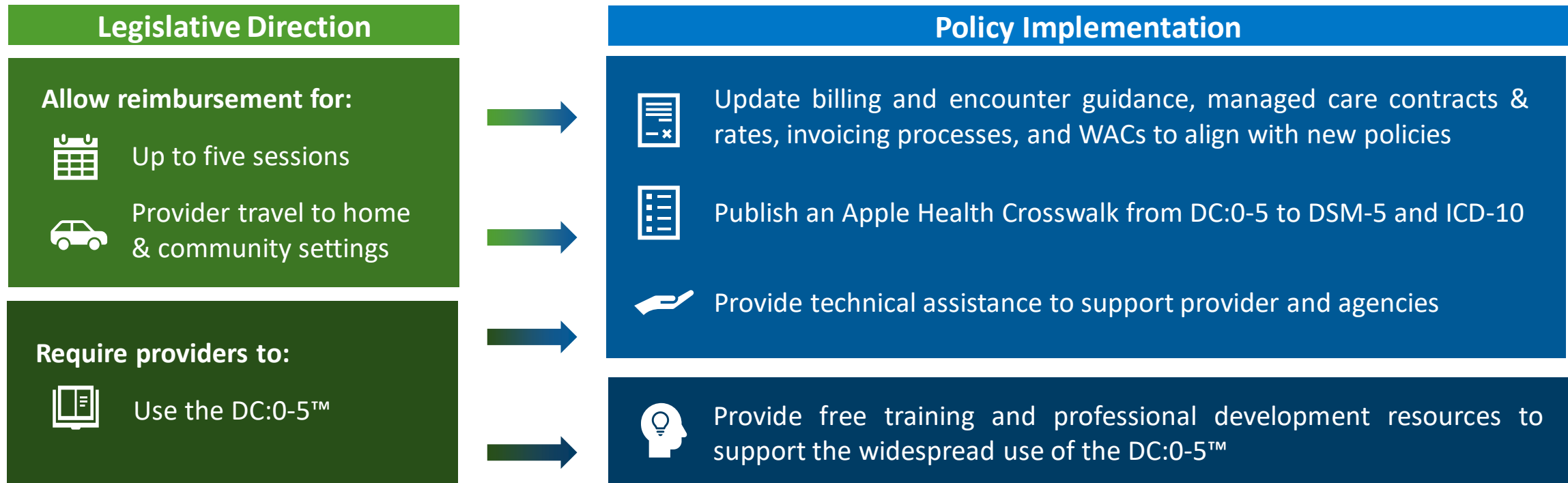


Developmentally appropriate mental health assessment

- ▶ Work on developmentally appropriate assessment & diagnosis for infants and young children has been ongoing for several years.
- ▶ Existing classification systems, such as the DSM, do not pay adequate attention to the unique developmental & relational experiences of infants and very young children.

Mental Health Assessment for Young Children (MHAYC) (HB1325, 2021)

For the purposes of **mental health assessment for children birth through 5 years of age**, Apple Health will:



MHAYC Implementation Report | Fall 2022

▶ Key findings from 20 respondents

- ▶ Easier billing, increased provider skills, and greater access to services
- ▶ Challenges in implementation, especially with regards to documentation/EHRs and provider travel
- ▶ Other systems-level factors impact MHAYC implementation



Multi-session Assessments

- 40% of respondents indicate planning to implement and 40% were already implementing.



Provider Travel

- No responses indicated current implementation.
- Despite challenges, respondents spoke positively about the potential.



Using the DC:0-5™

- 55% of respondents actively implementing and 35% planning or preparing to implement.

Providing IECMH / B-5 Services

Discussion | 9:00 – 9:45 am

Introductions

- ▶ Your name
- ▶ Your organization or agency
- ▶ 1 – 2 about: What led your organization to begin offering and/or thinking about offering birth – 5 services?



Providing IECMH services

If you have not yet started, what have you and your organization been considering?

- ▶ What was/is needed to get your organization on board with providing IECMH/B-5 services?
 - ▶ What were/are the strategies to get leadership on board?
- ▶ What do services look like for children birth – 5 in your setting/organization?
 - ▶ (i.e., types of services, specific processes and policies, how many staff support birth – 5)
- ▶ How does your organization support the diverse and intersectional needs of families?
 - ▶ Are there unique considerations when serving the birth to five population?
- ▶ What have been/are the greatest challenges/barriers to providing services to this age group?

Written responses



- ▶ Share specifics about your organization; the more details the better!
 - ▶ What does/did the process look like
 - ▶ What are your policies
 - ▶ Who is/was involved
 - ▶ What are your best practices
- ▶ Highlight your successes; feel free to brag!
- ▶ What are the new questions or considerations you are taking from the discussion?



Break

Please come
back by 10 am



Billing & Contracting

Small Group Discussion | 10 – 10:30 am

Billing & Contracting

If you have not yet started, what are you anticipating may be different?

- ▶ How is billing & contracting operationalized at your agency?
- ▶ Are there differences in how you bill/submit encounters when conducting these services with young children and their families?
- ▶ Have you experienced any differences to contracting for IECMH/B-5 services with HCA and/or Managed Care Organizations (MCOs)?
- ▶ What are the greatest challenges/barriers to billing and contracting for IECMH/B-5 services?

Written responses



- ▶ Share specifics about your organization; the more details the better!
 - ▶ What does/did the process look like
 - ▶ What are your policies
 - ▶ Who is/was involved
 - ▶ What are your best practices
- ▶ Highlight your successes; feel free to brag!
- ▶ What are the new questions or considerations you are taking from the discussion?

MHAYC Implementation

MURAL Activity | 10:30 – 10:45 am



Mental Health Assessment for Young Children (MHAYC)

- ▶ Using the virtual, share your organizations' policies/procedures, challenges, and best practices for the following topics:
 - ▶ Coordination with other partners
 - ▶ Structure of intake sessions
 - ▶ Screening/Assessment tools
 - ▶ Clinical documentation/ Electronic Health Records (EHR)
 - ▶ Caregiver engagement
 - ▶ Travel to home and community settings



Break

Please come
back by 11 am



MHAYC Implementation

Small Group Discussion | 11 – 12 pm

Questions

If you have not yet started, what are you considering and/or do you anticipate?

- ▶ What does this activity look like at your setting/organization?
 - ▶ What led your organization to start incorporating this activity into your work with children birth - 5?
 - ▶ What was/is needed to get your organization on board?
 - ▶ Do you have specific policies/procedures to how this is offered at your agency?
- ▶ Are there differences in how this is done for young children versus other ages at your organization?
- ▶ What are the greatest challenges/barriers to providing this activity?

Closing

Group Reflections | 12 – 12:30 pm

Want to learn more from HCA?



Visit our IECMH webpage

[Infant-early childhood mental health](#)



Find MHAYC Apple Health resources

[MHAYC website](#)

Email us!

Kiki.fabian@hca.wa.gov
Christine.cole@hca.wa.gov

Sign up for alerts & updates

Subscribe to [Prenatal – Age 25 Behavioral Health](#) topics through GovDelivery

Join HCA IECMH Office Hours

Sign-up under **Office Hours** on our [IECMH website](#)



What's available on the MHAYC webpage?

- Billing webinars
- Billing & encounter guidance
- Travel reimbursement forms
- DC:0-5 Crosswalk
- Guidance on the DC:0-5 requirement and documentation
- And more!

Closing Reflections

