



HCA Infant Early Childhood Mental Health Office Hours

October 27, 2022

Washington State
Health Care Authority

Today's Agenda

Note: Please drop questions in the chat throughout. HCA's team will respond during open floor portion.

- ▶ Welcome from the HCA IECMH team
- ▶ IECMH updates
- ▶ Apple Health Community Informed DC:0-5 Crosswalk
- ▶ Open floor for questions & comments

Getting to know one another

In the chat box:

- ▶ Your name
- ▶ Your role & agency (if applies)
- ▶ What are you hoping to get from joining today?



Welcome from HCA's IECMH team



Christine Cole, LCSW, IMH-E®

Infant & Early Childhood Mental Health Program Manager
Clinical Quality Care Transformation
Christine.Cole@hca.wa.gov



Kimberly "Kiki" Fabian, M.Ed.

Infant-Early Childhood Mental Health Analyst
Division of Behavioral Health and Recovery
Kiki.Fabian@hca.wa.gov

What does the HCA IECMH team do?



Implement and support policies for Apple Health IECMH services



Manage contracts and programs that support the IECMH field



Partner with sister agencies and organizations on IECMH projects

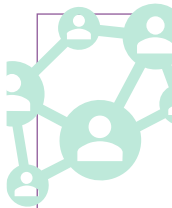
IECMH Updates



IECMH Provider
Webpage



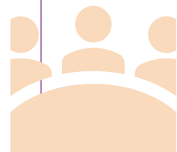
MHAYC FAQ &
resources



MHAYC
Multidisciplinary
Referral Guide



DOH Policy Statement



Apple Health
Community Informed
DC:0-5 Crosswalk

IECMH Webpage

- ▶ Learn about upcoming office hours
- ▶ Connect to Mental Health Assessment for Young Children (MHAYC) content
- ▶ Access new [IECMH](#) & related resources

<https://www.hca.wa.gov/billers-providers-partners/program-information-providers/infant-early-childhood-mental-health-services>



Mental Health Assessment for Young Children

FAQs and resources

FAQ Topic	Resources
Apple Health Billing & Reimbursement <ul style="list-style-type: none"> What procedure codes should I use for assessing/diagnosing young children? How do I bill for multiple assessments? How do I get reimbursed for travel to home & community settings? Are there trainings/webinars about billing for clinicians, billing/coding staff, or administrators? 	Visit HCA's Mental Health Assessment for Young Children webpage for providers – see <i>How do I bill?</i> Email HCA's Infant-Early Childhood Mental Health (IECMH) team <ul style="list-style-type: none"> Christine Cole: Christine.cole@hca.wa.gov Kiki Fabian: Kiki.fabian@hca.wa.gov
DC:0-5™ Requirement & DC:0-5™ Crosswalk <ul style="list-style-type: none"> Do Apple Health providers have to attend DC:0-5™ training? When does the DC:0-5™ requirement “start”? How do I put DC:0-5™ diagnoses on my claims? Where is the Apple Health DC:0-5™ Crosswalk? 	Visit HCA's Mental Health Assessment for Young Children webpage for providers – see <i>Resources to support DC:0-5™ adoption</i> Email HCA's Infant-Early Childhood Mental Health (IECMH) team <ul style="list-style-type: none"> Christine Cole: Christine.cole@hca.wa.gov Kiki Fabian: Kiki.fabian@hca.wa.gov
DC:0-5™ Trainings <ul style="list-style-type: none"> How do I register? Who is eligible? How long are trainings? Will CEUs be offered? 	Visit the Infant-Early Childhood Mental Health Workforce Collaborative's (IECMH WC's) About DC:0-5™ Training webpage Email the Washington Association for Infant Mental Health (WA AIMH) training team: training@wa-aimh.org
Additional Workforce Development Supports <ul style="list-style-type: none"> Are there supports for using the DC:0-5™ after training? What other trainings on developmentally appropriate diagnosis/assessment are available? 	Visit the Infant-Early Childhood Mental Health Workforce Collaborative's (IECMH WC's) Additional Resources webpage Email the Washington Association for Infant Mental Health (WA AIMH) training team: training@wa-aimh.org
Project Updates <ul style="list-style-type: none"> How can I find out about updates? 	Sign up for HCA's Prenatal – Age 25 Behavioral Health email listserv Sign up for the Infant-Early Childhood Mental Health Workforce Collaborative's (IECMH WC's) Communications email listserv

MHAYC FAQ & resources

Find out where to get answers to common Mental Health Assessment for Young Children questions.

Access through the [MHAYC](#) webpage!

MHAYC Multidisciplinary Guide

To support providers in navigating the complex early childhood system, HCA has developed a tool to help providers identify referral partners for non-mental health specific needs related to a child's functioning and well-being.

Access through the [MHAYC](#) webpage!

Considerations	Examples	Referral partners
Are there medical or physical conditions to explain the presenting behaviors or symptoms?	<ul style="list-style-type: none"> • Hard of hearing • Visual impairment • Potential side effect of prescribed medication • Reflux • Gastrointestinal issues 	<ul style="list-style-type: none"> • Primary care provider
Are there physical, cognitive, communication, or adaptive development concerns to explain behaviors or symptoms?	<ul style="list-style-type: none"> • Developmental regression or sudden loss of skills • Communication challenges • Delayed gross or fine motor movements • Strong reactions to sensory input 	<ul style="list-style-type: none"> • Early Supports for Infants and Toddlers (ESIT) • Neurodevelopmental center • Special education • Physical therapist • Speech language pathologist or speech therapist • Occupational therapist • Developmental therapist
Are there symptoms consistent with Autism Spectrum Disorder?	Refer to Diagnostic Classification of Mental Health and Developmental Disorders of Infancy and Early Childhood for symptoms.	<ul style="list-style-type: none"> • Autism Center of Excellence • Applied behavioral analysis
Are the symptoms only related to sleeping?	<ul style="list-style-type: none"> • Difficulty falling asleep • Wakes regularly throughout the night • Night terrors • Sleep walking • Sudden awakening with distress 	<ul style="list-style-type: none"> • Pediatric sleep center
Are the symptoms only related to feeding?	<ul style="list-style-type: none"> • Coughing, choking, or gagging when eating or drinking • Vomiting often • Being fussy around mealtimes • Sensory, textural, or oral aversion • Avoids entire food groups • Poor growth and appetite 	<ul style="list-style-type: none"> • Primary care provider • Speech language pathologist • Occupational therapist • Feeding team • Registered dietician



Department of Health (DOH) Policy Statement

The policy statement provides clarification that licensed Behavioral Health Agencies may document a mental health diagnosis in their clinical records using either the DC:0-5™ or the DSM.

Efforts to amend department rules to align with this guidance are also underway.

Apple Health Community Informed DC:0-5™ Crosswalk



DC:0-5™ Policy

Apple Health (Medicaid) mental health professionals conducting a mental health assessment for a child from birth through age 5 are required to use the DC:0-5™.

When are Apple Health mental health professionals required to use the DC:0-5™?

- ▶ HCA interprets that the intent of this legislation is to support the field in moving to the standard and expected use of the DC:0-5™ for children birth through age 5.
 - ▶ Current efforts are **aimed at building up workforce capacity** to support this new legislation through **DC:0-5™ training** and **the Apple Health DC:0-5™ Crosswalk**.
 - ▶ We anticipate there will be requests for clearer implementation dates and timelines in the future.

DC:0-5™ Crosswalk

- ▶ A DC: 0-5™ crosswalk is a reference tool for clinicians that helps to convert DC: 0–5™ diagnoses to associated ICD diagnostic codes and DSM diagnoses.

- CMS requires an ICD code for service reimbursement.

Centers for
Medicare and
Medicaid Services



- Many electronic record systems require a DSM diagnosis for documentation

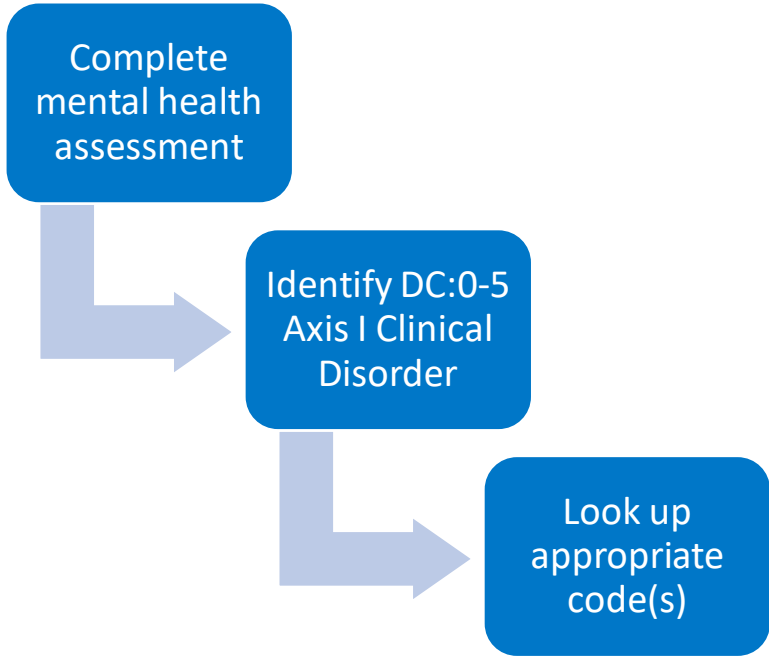
Electronic Record
Systems



Note: The DC: 0–5™ manual includes a sample crosswalk, but it is not state specific or updated on a regular basis.

How to use the DC:0-5™ Crosswalk

Note: Department of Health (DOH) released a [policy statement](#) clarifying that licensed Behavioral Health Agencies may document a mental health diagnosis in their clinical records using the DC:0-5™ or the DSM.



Anxiety Disorders

DC:0 – 5™ Axis I Clinical Disorder		DSM Diagnosis		ICD Classification	
Separation Anxiety Disorder	30.1	Separation Anxiety Disorder	309.21	Separation Anxiety Disorder of Childhood	F93.0
Social Anxiety Disorder (Social Phobia)	30.2	Social Anxiety Disorder	300.23	Social Phobia, Unspecified	F40.10
				Social Phobia, Generalized	F40.11

Visit the [Mental Health Assessment for Young Children webpage](#) to access the current crosswalk

Development of the Community-Informed Apple Health DC:0-5 Crosswalk

January 2022

Published interim Apple Health DC0-5™ Crosswalk

- Based on national crosswalk from Zero To Three
- Changes to align with current coding standards to ensure reimbursable

February – September 2022

IECMH providers, advocates, and experts

Received consultation from other professional disciplines

- Best clinical fit and billable ICD-10 diagnoses under the Apple Health mental health system

Annually

HCA will publish updated crosswalk to ensure remains aligned and current

- Review input from Crosswalk Feedback Form
- Review current coding standards

Open Floor

Comments & Questions

Stay Involved!



Just a couple days left to complete the **MHAYC Implementation Survey!**

- ▶ Complete the [survey](#).
- ▶ Share with your networks!



Join the HCA/DOH **Clinical Records Workgroup**

- ▶ Starting January 2023!
- ▶ Fill out the [Expression of Interest](#).



We want to hear from your agency!

We are interested in those who are just getting started & those who have been doing this for some time.

Want to learn more from HCA?



Visit our website

Infant-early childhood mental health services



Find MHAYC Billing Supports

Webinars, billing guides, and forms under
How Do I Bill? on our MHAYC [website](#)

Email us!

Kiki.fabian@hca.wa.gov
Christine.cole@hca.wa.gov

Sign up for alerts & updates

Subscribe to [Prenatal – Age 25 Behavioral Health](#)
topics through GovDelivery



Join HCA IECMH Office Hours

Join from the IECMH [webpage](#) under **Office Hours**

