

# WISe Administrative Outcome Measures

NOVEMBER 2023

---

*This report presents administrative outcome measures for youth first entering WISe services between SFY 2019 and SFY 2022 who could be linked with administrative outcome data (approximately 99% of all youth who received WISe services over this period). Measures are tabulated for the four quarters (12 months) prior to WISe entry and for up to six quarters (up to 18 months) following WISe entry.*

**Mental Health Inpatient Services** - Any inpatient mental health services in the quarter, including state hospitals, CSTC, CLIP, community hospitals, or evaluation and treatment centers.

**Mental Health Crisis Services** - Mental health crisis service days per 1,000 member months.

**Mental Health Services Received, if Psychotropic Medications Filled** - Of clients who received psychotropic medications in five key classes (antianxiety, antidepressant, antimania, antipsychotic, ADHD) in the period, those who received at least one mental health service in the same period.

**Substance Use Disorder (SUD) Services Received, if Treatment Need Indicated** - Of clients with substance use disorder treatment need indicated in the 12 months prior to WISe entry, those receiving any substance use disorder services (inpatient, outpatient, opiate substitution/buprenorphine or case management) in the period.

**Emergency Department Visits** - Emergency department visits, unduplicated by service date, per 1,000 member months.

**Emergency Department Visits with Mental Health Diagnosis** - Emergency Department visits with a mental health diagnosis in seven key categories (psychosis, mania/bipolar, depression, anxiety, ADHD, disruptive/impulse/conduct disorder, adjustment disorder), unduplicated by service date, per 1,000 member months.

**Emergency Department Visits with Substance Use Disorder Diagnosis** - Emergency department visits with an alcohol- or drug-related diagnosis, unduplicated by service date, per 1,000 member months.

**Suicide/Self-Injury Diagnoses** - Number of days with at least one medical claim/encounter with a diagnosis indicating attempted suicide or self-injury, per 1,000 member months. Months prior to October 2015 were multiplied by an adjustment factor to enhance comparability of pre- and post-ICD-10 suicide/self-injury diagnosing.

**Juvenile Criminal Convictions** - Any convictions in the period.

**Foster Care Placement Changes** - Of clients in foster care in month of WISe entry, any placement changes in period.

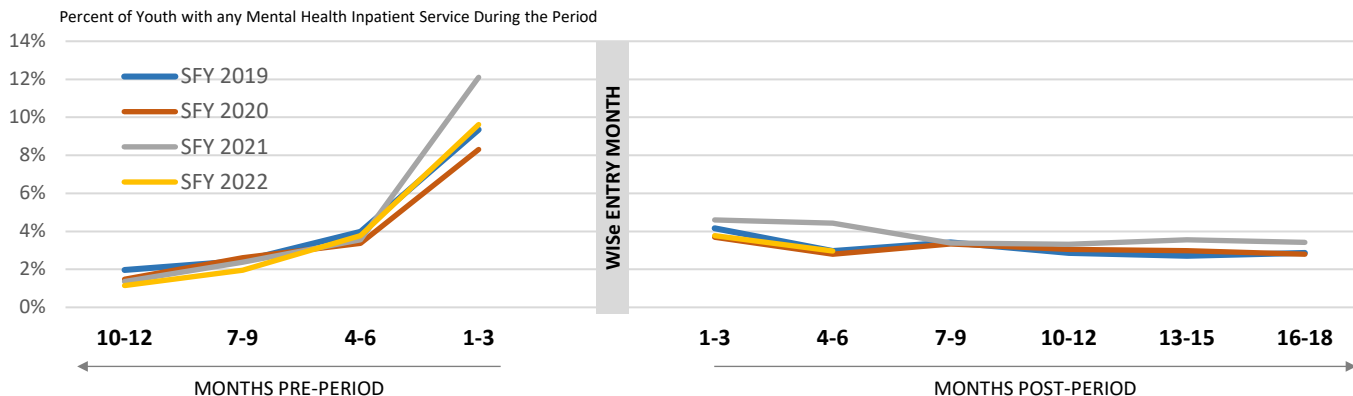
**Homelessness/Housing Instability** - Ever homeless without housing (e.g. in a shelter or on the street) or homeless with housing (e.g. couch surfing) in period, based on ACES data.

**Any Out-of-Home Placement** - Youth with any type of out-of-home placement in the period, including foster care, mental health inpatient, Juvenile Rehabilitation institution, or Developmental Disabilities residential habilitation center.

# WISe Outcomes

NOVEMBER 2023

## Mental Health Inpatient Services



Cohort	Entered Wise	N	MONTHS PRE-PERIOD				MONTHS POST PERIOD					
			10-12	7-9	4-6	1-3	1-3	4-6	7-9	10-12	13-15	16-18
<b>WASHINGTON</b>												
Percent of Youth with any Mental Health Inpatient Services During the Period												
SFY 2019	07/18-06/19	2,695	2.0%	2.4%	4.0%	9.4%	4.2%	3.0%	3.4%	2.9%	2.7%	2.9%
SFY 2020	07/19-06/20	3,178	1.5%	2.6%	3.4%	8.3%	3.7%	2.8%	3.3%	3.1%	3.0%	2.8%
SFY 2021	07/20-06/21	2,867	1.4%	2.4%	3.6%	12.1%	4.6%	4.4%	3.4%	3.3%	3.6%	3.4%
SFY 2022	07/21-06/22	---	1.1%	2.0%	3.8%	9.6%	3.8%	3.0%	Data not available			
<b>REGIONS</b>												
<b>GREAT RIVERS</b>												
SFY 2019	07/18-06/19	---	1.3%	0.9%	0.9%	5.1%	3.0%	1.3%	1.7%	1.3%	3.4%	1.7%
SFY 2020	07/19-06/20	---	0.4%	4.0%	4.0%	6.2%	1.8%	1.8%	3.3%	4.0%	2.6%	2.2%
SFY 2021	07/20-06/21	---	0.6%	0.6%	1.9%	7.1%	2.2%	2.9%	1.9%	1.9%	2.9%	2.2%
SFY 2022	07/21-06/22	---	1.2%	0.6%	1.8%	7.4%	3.5%	2.1%	Data not available			
<b>GREATER COLUMBIA</b>												
SFY 2019	07/18-06/19	---	1.0%	1.2%	1.7%	5.6%	1.7%	1.7%	2.0%	2.0%	1.0%	1.5%
SFY 2020	07/19-06/20	---	1.2%	2.1%	2.1%	4.3%	1.7%	1.9%	2.8%	2.4%	2.1%	1.7%
SFY 2021	07/20-06/21	---	0.5%	1.6%	1.6%	7.2%	1.9%	4.0%	1.9%	2.1%	1.6%	2.4%
SFY 2022	07/21-06/22	---	1.4%	0.8%	2.7%	5.5%	1.6%	1.1%	Data not available			
<b>KING COUNTY</b>												
SFY 2019	07/18-06/19	---	4.2%	3.3%	8.9%	13.6%	6.4%	6.4%	5.3%	6.1%	4.7%	4.7%
SFY 2020	07/19-06/20	---	2.1%	3.2%	4.2%	6.7%	2.9%	1.9%	2.7%	2.9%	2.5%	1.9%
SFY 2021	07/20-06/21	---	3.5%	4.5%	5.6%	16.7%	9.4%	5.6%	5.9%	4.2%	4.2%	4.9%
SFY 2022	07/21-06/22	---	2.7%	3.6%	5.9%	12.7%	4.5%	2.7%	Data not available			
<b>NORTH CENTRAL</b>												
SFY 2019	07/18-06/19	---	0.7%	0.7%	0.7%	5.5%	2.1%	3.4%	2.8%	3.4%	2.1%	1.4%
SFY 2020	07/19-06/20	---	1.2%	1.2%	2.4%	8.4%	7.2%	6.0%	6.0%	4.8%	3.6%	3.6%
SFY 2021	07/20-06/21	---	1.0%	1.0%	5.1%	10.2%	6.1%	4.1%	3.1%	4.1%	2.0%	2.0%
SFY 2022	07/21-06/22	---	0.0%	2.7%	3.5%	8.8%	4.4%	1.8%	Data not available			
<b>NORTH SOUND</b>												
SFY 2019	07/18-06/19	---	2.6%	4.4%	7.5%	12.6%	4.9%	3.6%	4.1%	2.1%	2.1%	2.8%
SFY 2020	07/19-06/20	---	1.6%	5.2%	6.3%	10.6%	3.8%	2.9%	3.6%	2.7%	3.6%	4.5%
SFY 2021	07/20-06/21	---	2.3%	3.3%	7.0%	13.6%	5.4%	4.9%	Data not available			

# WISe Outcomes

NOVEMBER 2023

## Mental Health Inpatient Services

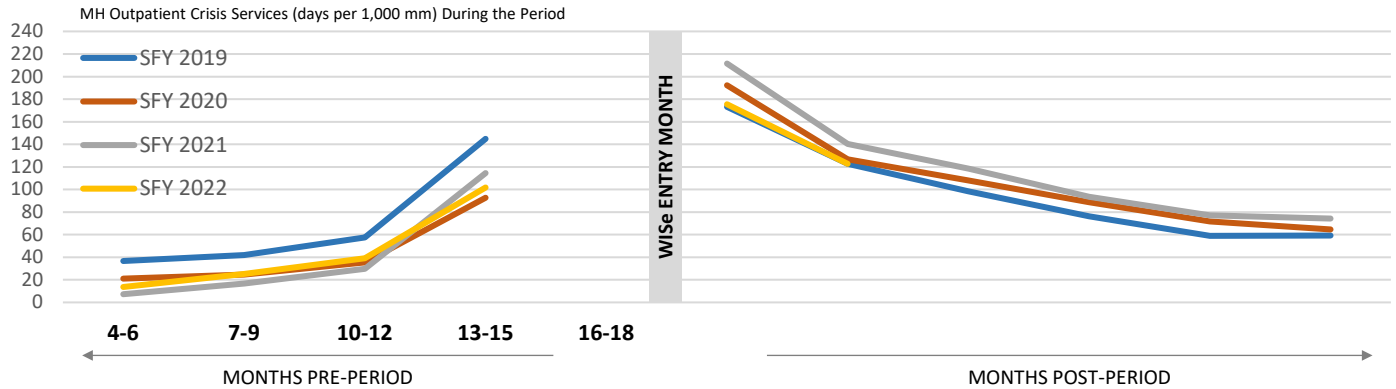
SFY 2022	07/21-06/22	--- <sup>2</sup>	1.5%	3.5%	7.1%	8.0%	4.7%	3.5%	3.5%	1.5%	2.1%	0.6%
<b>PIERCE</b>												
SFY 2019	07/18-06/19	--- <sup>2</sup>	0.7%	0.4%	1.1%	6.7%	2.1%	1.1%	3.2%	3.2%	4.2%	4.2%
SFY 2020	07/19-06/20	--- <sup>2</sup>	0.5%	0.5%	0.8%	6.2%	3.0%	1.1%	1.9%	1.9%	1.9%	2.7%
SFY 2021	07/20-06/21	--- <sup>2</sup>	1.0%	1.6%	2.6%	9.0%	3.8%	2.9%	2.6%	3.5%	4.2%	5.1%
SFY 2022	07/21-06/22	--- <sup>2</sup>	0.8%	3.4%	3.8%	13.3%	2.7%	3.0%	<i>Data not available</i>			
<b>SALISH</b>												
SFY 2019	07/18-06/19	--- <sup>2</sup>	0.0%	0.5%	2.1%	7.4%	7.9%	3.2%	3.7%	1.6%	1.1%	1.1%
SFY 2020	07/19-06/20	--- <sup>2</sup>	1.9%	1.4%	1.4%	7.5%	5.1%	1.9%	2.8%	1.9%	2.8%	1.9%
SFY 2021	07/20-06/21	--- <sup>2</sup>	0.0%	1.0%	1.5%	10.8%	3.1%	3.6%	2.6%	2.1%	3.1%	1.5%
SFY 2022	07/21-06/22	--- <sup>2</sup>	0.0%	0.0%	1.3%	4.8%	1.7%	1.3%	<i>Data not available</i>			
<b>SOUTHWEST</b>												
SFY 2019	07/18-06/19	--- <sup>2</sup>	0.0%	0.0%	2.2%	6.1%	3.3%	1.7%	2.2%	1.7%	2.8%	3.3%
SFY 2020	07/19-06/20	--- <sup>2</sup>	1.0%	0.5%	1.6%	7.8%	4.7%	2.6%	1.6%	2.1%	2.1%	1.6%
SFY 2021	07/20-06/21	--- <sup>2</sup>	1.8%	2.4%	4.1%	14.1%	4.7%	4.7%	4.7%	5.3%	4.1%	3.5%
SFY 2022	07/21-06/22	--- <sup>2</sup>	0.7%	4.0%	4.0%	7.3%	4.0%	7.9%	<i>Data not available</i>			
<b>SPOKANE</b>												
SFY 2019	07/18-06/19	--- <sup>2</sup>	3.2%	5.3%	5.3%	14.7%	5.6%	3.5%	4.5%	3.7%	2.7%	3.7%
SFY 2020	07/19-06/20	--- <sup>2</sup>	2.9%	3.2%	5.5%	17.9%	7.5%	6.9%	7.5%	6.6%	6.1%	5.5%
SFY 2021	07/20-06/21	--- <sup>2</sup>	1.8%	3.6%	3.4%	19.7%	6.8%	7.2%	4.1%	5.0%	5.0%	5.0%
SFY 2022	07/21-06/22	--- <sup>2</sup>	1.5%	1.9%	4.4%	13.9%	6.5%	3.8%	<i>Data not available</i>			
<b>THURSTON-MASON</b>												
SFY 2019	07/18-06/19	--- <sup>2</sup>	4.6%	5.4%	3.8%	9.2%	3.8%	2.3%	3.1%	1.5%	3.1%	2.3%
SFY 2020	07/19-06/20	--- <sup>2</sup>	1.3%	1.6%	2.3%	7.8%	3.2%	3.6%	2.6%	2.3%	2.9%	2.3%
SFY 2021	07/20-06/21	--- <sup>2</sup>	0.0%	2.0%	2.4%	8.9%	2.4%	2.4%	2.4%	1.2%	2.4%	1.6%
SFY 2022	07/21-06/22	--- <sup>2</sup>	0.5%	0.5%	2.4%	13.0%	2.4%	3.8%	<i>Data not available</i>			

**Notes.** <sup>1</sup>Primary suppression: To protect the privacy of individuals, cells in this data product that represent 10 or fewer persons are not displayed. <sup>2</sup>Secondary suppression: Some additional numbers representing more than 10 persons have also been suppressed to ensure that cells representing 10 or fewer persons cannot be calculated.

# WISe Outcomes

NOVEMBER 2023

## Mental Health Crisis Services



Cohort	Entered Wise	N	MONTHS PRE-PERIOD				MONTHS POST PERIOD					
			10-12	7-9	4-6	1-3	1-3	4-6	7-9	10-12	13-15	16-18
<b>WASHINGTON</b>												
MH Outpatient Crisis Services (days per 1,000 mm) During the Period												
SFY 2019	07/18-06/19	2,695	37	42	58	145	173	123	98	76	59	59
SFY 2020	07/19-06/20	3,178	21	25	36	93	192	127	108	89	72	65
SFY 2021	07/20-06/21	2,867	7	17	30	114	212	140	119	93	77	74
SFY 2022	07/21-06/22	--- <sup>2</sup>	14	25	39	102	175	123	Data not available			
<b>REGIONS</b>												
Entered Wise												
<b>GREAT RIVERS</b>												
SFY 2019	07/18-06/19	--- <sup>2</sup>	76	58	91	248	270	226	157	124	90	60
SFY 2020	07/19-06/20	--- <sup>2</sup>	52	91	103	120	363	157	137	125	111	81
SFY 2021	07/20-06/21	--- <sup>2</sup>	8	35	28	197	342	223	195	131	191	183
SFY 2022	07/21-06/22	--- <sup>2</sup>	37	34	50	130	244	161	Data not available			
<b>GREATER COLUMBIA</b>												
SFY 2019	07/18-06/19	--- <sup>2</sup>	42	43	49	124	113	96	58	59	34	39
SFY 2020	07/19-06/20	--- <sup>2</sup>	13	44	34	100	125	70	51	28	32	26
SFY 2021	07/20-06/21	--- <sup>2</sup>	9	8	6	53	88	72	42	43	32	35
SFY 2022	07/21-06/22	--- <sup>2</sup>	4	8	23	57	58	46	Data not available			
<b>KING COUNTY</b>												
SFY 2019	07/18-06/19	--- <sup>2</sup>	36.3	33.7	62.7	120.7	73.6	40.1	47.8	46.8	14.4	32.9
SFY 2020	07/19-06/20	--- <sup>2</sup>	15	22	27	54	32	33	23	13	17	11
SFY 2021	07/20-06/21	--- <sup>2</sup>	7	5	26	47	103	48	66	60	46	31
SFY 2022	07/21-06/22	--- <sup>2</sup>	2	14	8	50	106	105	Data not available			
<b>NORTH CENTRAL</b>												
SFY 2019	07/18-06/19	--- <sup>2</sup>	25	29	16	134	78	88	42	19	19	26
SFY 2020	07/19-06/20	--- <sup>2</sup>	35	39	88	158	100	167	85	128	107	21
SFY 2021	07/20-06/21	--- <sup>2</sup>	21	42	65	79	163	119	86	72	34	21
SFY 2022	07/21-06/22	--- <sup>2</sup>	24	46	61	100	186	59	Data not available			
<b>NORTH SOUND</b>												
SFY 2019	07/18-06/19	--- <sup>2</sup>	36	58	64	100	187	134	128	81	48	55
SFY 2020	07/19-06/20	--- <sup>2</sup>	31	11	15	46	187	144	106	74	50	53
SFY 2021	07/20-06/21	--- <sup>2</sup>	4	3	16	68	220	157	106	69	58	41

# WISe Outcomes

NOVEMBER 2023

## Mental Health Crisis Services

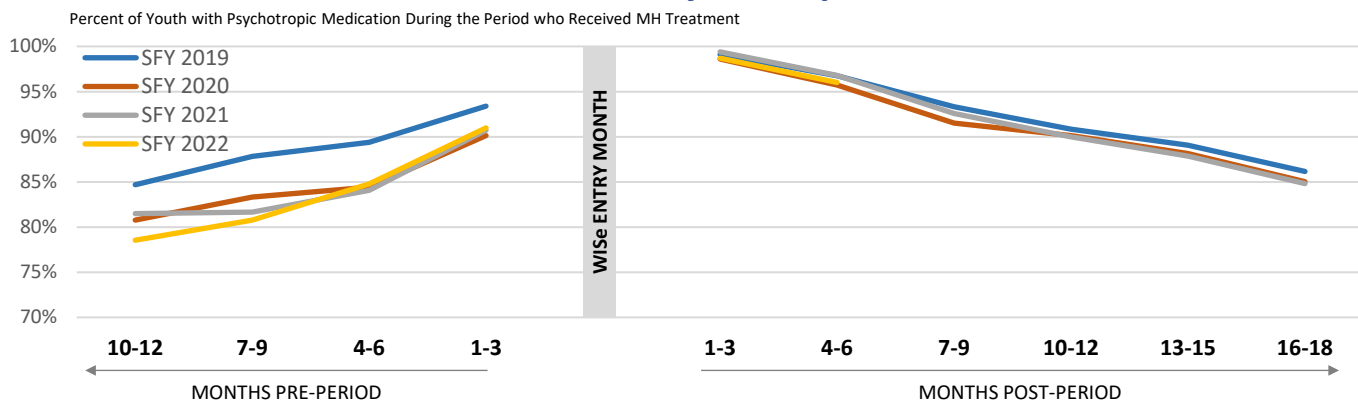
SFY 2022	07/21-06/22	---	2	7	30	102	141	123	<i>Data not available</i>			
<b>PIERCE</b>												
SFY 2019	07/18-06/19	---	31	39	29	204	146	86	85	57	85	85
SFY 2020	07/19-06/20	---	12	1	6	89	237	178	144	129	95	88
SFY 2021	07/20-06/21	---	8	9	6	82	297	217	155	148	96	123
SFY 2022	07/21-06/22	---	1	22	24	223	366	218	<i>Data not available</i>			
<b>SALISH</b>												
SFY 2019	07/18-06/19	---	23	20	44	75	150	70	65	39	26	59
SFY 2020	07/19-06/20	---	15	17	20	101	103	99	125	120	120	109
SFY 2021	07/20-06/21	---	2	9	20	108	149	80	130	89	45	66
SFY 2022	07/21-06/22	---	18	0	14	33	176	98	<i>Data not available</i>			
<b>SOUTHWEST</b>												
SFY 2019	07/18-06/19	---	0	0	23	139	374	284	292	215	189	180
SFY 2020	07/19-06/20	---	9	13	55	188	699	393	353	335	165	142
SFY 2021	07/20-06/21	---	11	15	122	331	564	388	384	277	245	181
SFY 2022	07/21-06/22	---	51	137	93	99	368	367	<i>Data not available</i>			
<b>SPOKANE</b>												
SFY 2019	07/18-06/19	---	36	61	83	175	257	161	98	93	81	55
SFY 2020	07/19-06/20	---	23	9	28	102	138	71	67	44	40	79
SFY 2021	07/20-06/21	---	9	34	37	93	136	70	65	73	37	46
SFY 2022	07/21-06/22	---	8	19	37	85	95	56	<i>Data not available</i>			
<b>THURSTON-MASON</b>												
SFY 2019	07/18-06/19	---	47	41	95	130	101	78	43	24	31	34
SFY 2020	07/19-06/20	---	19	17	48	103	191	155	151	104	124	101
SFY 2021	07/20-06/21	---	0	19	43	211	201	134	97	60	49	50
SFY 2022	07/21-06/22	---	13	35	99	150	197	132	<i>Data not available</i>			

**Notes.** <sup>1</sup>Primary suppression: To protect the privacy of individuals, cells in this data product that represent 10 or fewer persons are not displayed. <sup>2</sup>Secondary suppression: Some additional numbers representing more than 10 persons have also been suppressed to ensure that cells representing 10 or fewer persons cannot be calculated.

# WISe Outcomes

NOVEMBER 2023

## Mental Health Services Received, if Psychotropic Medications Filled



Cohort	Entered Wise	N	MONTHS PRE-PERIOD				MONTHS POST PERIOD					
			10-12	7-9	4-6	1-3	1-3	4-6	7-9	10-12	13-15	16-18
Percent of Youth with Psychotropic Medication During the Period who Received MH Treatment												
<b>WASHINGTON</b>												
SFY 2019	07/18-06/19	1,979	84.7%	87.8%	89.4%	93.4%	99.1%	96.8%	93.3%	90.8%	89.1%	86.2%
SFY 2020	07/19-06/20	2,163	80.8%	83.3%	84.4%	90.1%	98.6%	95.7%	91.5%	90.1%	88.2%	85.0%
SFY 2021	07/20-06/21	2,050	81.5%	81.6%	84.1%	90.7%	99.4%	96.8%	92.6%	90.0%	87.9%	84.8%
SFY 2022	07/21-06/22	1,846	78.5%	80.8%	84.8%	91.0%	98.7%	96.0%	Data not available			
<b>REGIONS</b>												
<b>GREAT RIVERS</b>												
SFY 2019	07/18-06/19	179	86.3%	87.6%	85.0%	93.4%	98.5%	97.7%	94.4%	89.8%	95.4%	93.4%
SFY 2020	07/19-06/20	209	81.0%	85.7%	87.0%	89.1%	98.2%	94.0%	93.1%	94.3%	92.7%	85.4%
SFY 2021	07/20-06/21	225	82.9%	85.7%	84.7%	89.3%	99.4%	97.4%	92.5%	95.7%	92.5%	88.2%
SFY 2022	07/21-06/22	221	88.0%	84.7%	82.6%	93.3%	98.8%	96.2%	Data not available			
<b>GREATER COLUMBIA</b>												
SFY 2019	07/18-06/19	273	90.4%	89.6%	87.0%	89.8%	99.0%	96.2%	95.1%	90.3%	87.4%	83.2%
SFY 2020	07/19-06/20	284	81.2%	85.8%	81.4%	89.0%	99.5%	98.0%	92.3%	91.0%	88.2%	87.1%
SFY 2021	07/20-06/21	240	88.3%	85.8%	86.6%	92.6%	99.4%	98.2%	92.1%	89.4%	85.5%	83.4%
SFY 2022	07/21-06/22	221	71.1%	78.6%	83.9%	91.5%	98.6%	98.1%	Data not available			
<b>KING COUNTY</b>												
SFY 2019	07/18-06/19	244	82.7%	88.6%	89.3%	95.4%	100.0%	98.2%	93.9%	91.1%	90.3%	89.0%
SFY 2020	07/19-06/20	265	81.7%	84.0%	85.2%	92.5%	95.3%	94.7%	90.2%	89.7%	87.8%	89.2%
SFY 2021	07/20-06/21	199	76.2%	75.3%	76.0%	89.3%	100.0%	96.9%	90.4%	90.2%	89.2%	87.5%
SFY 2022	07/21-06/22	119	75.6%	81.6%	90.0%	89.7%	96.2%	95.9%	Data not available			
<b>NORTH CENTRAL</b>												
SFY 2019	07/18-06/19	76	83.3%	94.3%	91.9%	96.0%	100.0%	97.9%	97.9%	95.5%	88.6%	87.5%
SFY 2020	07/19-06/20	62	91.7%	86.7%	90.2%	95.8%	100.0%	95.2%	94.4%	90.6%	83.9%	87.1%
SFY 2021	07/20-06/21	73	87.5%	97.0%	86.5%	91.3%	96.2%	98.1%	94.5%	92.9%	88.7%	87.5%
SFY 2022	07/21-06/22	77	96.3%	87.9%	97.2%	95.6%	100.0%	96.3%	Data not available			
<b>NORTH SOUND</b>												
SFY 2019	07/18-06/19	306	82.6%	85.3%	87.6%	93.5%	99.1%	96.7%	95.8%	91.9%	90.1%	87.9%
SFY 2020	07/19-06/20	325	79.2%	77.4%	79.6%	91.1%	99.2%	96.3%	93.0%	87.3%	84.8%	77.1%
SFY 2021	07/20-06/21	334	80.0%	78.3%	86.7%	90.4%	99.6%	97.2%	93.6%	92.3%	86.8%	83.8%

# WISe Outcomes

NOVEMBER 2023

## Mental Health Services Received, if Psychotropic Medications Filled

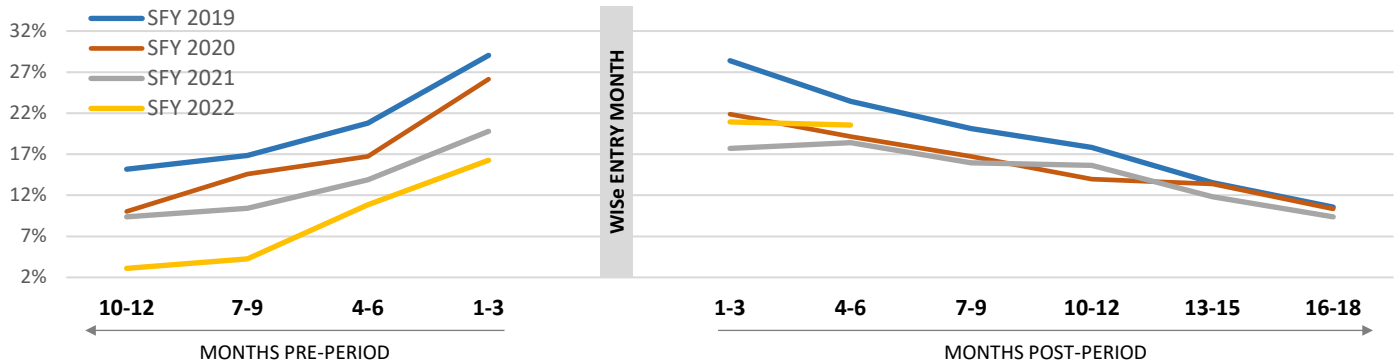
SFY 2022	07/21-06/22	269	77.8%	78.4%	85.8%	90.5%	98.9%	96.4%	<i>Data not available</i>			
<b>PIERCE</b>												
SFY 2019	07/18-06/19	204	82.8%	85.6%	87.5%	93.6%	98.6%	94.2%	86.2%	86.3%	79.4%	74.8%
SFY 2020	07/19-06/20	223	68.6%	85.3%	79.3%	79.6%	100.0%	93.9%	87.1%	82.3%	82.9%	81.8%
SFY 2021	07/20-06/21	202	77.5%	73.0%	73.9%	89.1%	100.0%	93.3%	89.1%	80.2%	79.8%	80.5%
SFY 2022	07/21-06/22	195	71.8%	72.2%	80.2%	89.7%	97.0%	95.3%	<i>Data not available</i>			
<b>SALISH</b>												
SFY 2019	07/18-06/19	148	89.5%	88.1%	93.0%	97.8%	100.0%	97.4%	96.1%	90.4%	87.2%	92.4%
SFY 2020	07/19-06/20	149	84.9%	87.9%	90.5%	93.3%	98.1%	95.8%	93.3%	95.8%	95.2%	95.2%
SFY 2021	07/20-06/21	132	82.6%	77.4%	91.5%	97.3%	100.0%	95.6%	88.9%	85.1%	84.3%	81.0%
SFY 2022	07/21-06/22	148	76.0%	75.0%	76.6%	88.4%	100.0%	98.0%	<i>Data not available</i>			
<b>SOUTHWEST</b>												
SFY 2019	07/18-06/19	142	87.3%	95.8%	92.7%	92.3%	98.1%	99.1%	97.1%	91.2%	95.8%	88.0%
SFY 2020	07/19-06/20	155	80.6%	81.8%	86.0%	92.9%	99.1%	95.5%	92.5%	91.8%	88.8%	85.5%
SFY 2021	07/20-06/21	126	80.4%	87.3%	89.7%	90.2%	100.0%	98.8%	96.6%	91.6%	91.0%	84.7%
SFY 2022	07/21-06/22	117	80.9%	83.9%	79.3%	81.7%	98.8%	95.4%	<i>Data not available</i>			
<b>SPOKANE</b>												
SFY 2019	07/18-06/19	319	82.8%	85.8%	91.7%	92.5%	99.6%	96.8%	92.5%	93.5%	90.8%	87.6%
SFY 2020	07/19-06/20	279	85.1%	84.7%	92.0%	93.1%	99.1%	94.9%	92.6%	93.4%	91.9%	89.4%
SFY 2021	07/20-06/21	366	82.9%	85.6%	88.0%	90.8%	99.3%	97.2%	94.8%	92.0%	92.0%	86.1%
SFY 2022	07/21-06/22	340	79.9%	85.5%	87.4%	94.3%	99.2%	95.1%	<i>Data not available</i>			
<b>THURSTON-MASON</b>												
SFY 2019	07/18-06/19	88	78.0%	84.1%	93.8%	93.2%	96.4%	91.2%	75.5%	86.0%	81.6%	69.0%
SFY 2020	07/19-06/20	212	83.1%	79.0%	79.8%	88.4%	97.9%	98.6%	88.5%	87.5%	84.3%	78.4%
SFY 2021	07/20-06/21	153	77.3%	78.1%	74.0%	89.4%	98.3%	94.2%	91.2%	86.5%	86.0%	85.2%
SFY 2022	07/21-06/22	139	76.5%	81.4%	87.3%	89.8%	99.0%	93.4%	<i>Data not available</i>			

# WISe Outcomes

NOVEMBER 2023

## Substance Use Disorder Treatment Services Received, If Need Indicated

Percent of Youth with SUD Treatment Need who Receive SUD Services During the Period



Cohort	Entered Wise	N	MONTHS PRE-PERIOD				MONTHS POST PERIOD					
			10-12	7-9	4-6	1-3	1-3	4-6	7-9	10-12	13-15	16-18
<b>WASHINGTON</b>												
Percent of Youth with SUD Treatment Need who Receive SUD Services During the Period												
SFY 2019	07/18-06/19	303	15.2%	16.8%	20.8%	29.0%	28.4%	23.4%	20.1%	17.8%	13.5%	10.6%
SFY 2020	07/19-06/20	329	10.0%	14.6%	16.7%	26.1%	21.9%	19.1%	16.7%	14.0%	13.4%	10.3%
SFY 2021	07/20-06/21	288	9.4%	10.4%	13.9%	19.8%	17.7%	18.4%	16.0%	15.6%	11.8%	9.4%
SFY 2022	07/21-06/22	---	3.1%	4.3%	10.9%	16.3%	20.9%	20.5%	Data not available			
<b>REGIONS</b>												
Entered Wise												
<b>GREAT RIVERS</b>												
SFY 2019	07/18-06/19	---	21.7%	21.7%	30.4%	43.5%	47.8%	34.8%	39.1%	30.4%	17.4%	8.7%
SFY 2020	07/19-06/20	---	14.3%	23.8%	28.6%	38.1%	38.1%	42.9%	33.3%	19.0%	19.0%	9.5%
SFY 2021	07/20-06/21	---	12.1%	9.1%	21.2%	30.3%	21.2%	30.3%	27.3%	30.3%	24.2%	12.1%
SFY 2022	07/21-06/22	---	0.0%	0.0%	9.1%	22.7%	22.7%	31.8%	Data not available			
<b>GREATER COLUMBIA</b>												
SFY 2019	07/18-06/19	---	18.8%	23.4%	31.3%	46.9%	31.3%	29.7%	26.6%	26.6%	15.6%	15.6%
SFY 2020	07/19-06/20	---	11.8%	25.5%	21.6%	33.3%	19.6%	17.6%	17.6%	13.7%	13.7%	13.7%
SFY 2021	07/20-06/21	---	11.8%	14.7%	23.5%	35.3%	29.4%	26.5%	14.7%	8.8%	8.8%	8.8%
SFY 2022	07/21-06/22	---	4.7%	2.3%	16.3%	14.0%	20.9%	20.9%	Data not available			
<b>KING COUNTY</b>												
SFY 2019	07/18-06/19	---	8.8%	5.9%	11.8%	11.8%	20.6%	20.6%	17.6%	11.8%	11.8%	5.9%
SFY 2020	07/19-06/20	---	5.9%	8.8%	14.7%	8.8%	14.7%	14.7%	8.8%	11.8%	8.8%	8.8%
SFY 2021	07/20-06/21	---	0.0%	0.0%	4.2%	12.5%	16.7%	20.8%	16.7%	16.7%	8.3%	8.3%
SFY 2022	07/21-06/22	---	4.5%	4.5%	13.6%	13.6%	18.2%	22.7%	Data not available			
<b>NORTH CENTRAL</b>												
SFY 2019	07/18-06/19	---	0.0%	0.0%	16.7%	33.3%	50.0%	16.7%	0.0%	16.7%	0.0%	0.0%
SFY 2020	07/19-06/20	---	12.5%	12.5%	0.0%	37.5%	12.5%	12.5%	12.5%	0.0%	25.0%	12.5%
SFY 2021	07/20-06/21	---	0.0%	0.0%	0.0%	0.0%	10.0%	10.0%	10.0%	10.0%	20.0%	20.0%
SFY 2022	07/21-06/22	---	20.0%	30.0%	30.0%	30.0%	30.0%	10.0%	Data not available			
<b>NORTH SOUND</b>												
SFY 2019	07/18-06/19	---	7.3%	9.8%	12.2%	14.6%	17.1%	14.6%	9.8%	12.2%	4.9%	4.9%
SFY 2020	07/19-06/20	---	11.1%	22.2%	16.7%	18.5%	13.0%	16.7%	11.1%	9.3%	11.1%	7.4%
SFY 2021	07/20-06/21	---	10.0%	16.0%	18.0%	16.0%	12.0%	10.0%	12.0%	16.0%	14.0%	6.0%



# WISe Outcomes

NOVEMBER 2023

## Substance Use Disorder Treatment Services Received, If Need Indicated

SFY 2022	07/21-06/22	--- <sup>2</sup>	2.6%	5.3%	7.9%	18.4%	15.8%	23.7%	Data not available			
<b>PIERCE</b>												
SFY 2019	07/18-06/19	--- <sup>2</sup>	10.7%	7.1%	21.4%	28.6%	21.4%	14.3%	14.3%	10.7%	14.3%	10.7%
SFY 2020	07/19-06/20	--- <sup>2</sup>	6.3%	3.1%	18.8%	12.5%	15.6%	6.3%	15.6%	15.6%	9.4%	9.4%
SFY 2021	07/20-06/21	--- <sup>2</sup>	11.1%	11.1%	14.8%	18.5%	18.5%	14.8%	11.1%	11.1%	3.7%	3.7%
SFY 2022	07/21-06/22	--- <sup>2</sup>	0.0%	0.0%	13.8%	6.9%	37.9%	27.6%	Data not available			
<b>SALISH</b>												
SFY 2019	07/18-06/19	--- <sup>2</sup>	27.8%	38.9%	38.9%	55.6%	72.2%	44.4%	38.9%	33.3%	27.8%	22.2%
SFY 2020	07/19-06/20	--- <sup>2</sup>	18.2%	27.3%	31.8%	40.9%	22.7%	22.7%	18.2%	18.2%	4.5%	4.5%
SFY 2021	07/20-06/21	--- <sup>2</sup>	18.8%	12.5%	18.8%	25.0%	12.5%	18.8%	12.5%	18.8%	6.3%	12.5%
SFY 2022	07/21-06/22	--- <sup>2</sup>	0.0%	0.0%	0.0%	27.3%	18.2%	9.1%	Data not available			
<b>SOUTHWEST</b>												
SFY 2019	07/18-06/19	--- <sup>2</sup>	16.7%	22.2%	22.2%	22.2%	27.8%	33.3%	22.2%	16.7%	16.7%	11.1%
SFY 2020	07/19-06/20	--- <sup>2</sup>	15.4%	11.5%	11.5%	38.5%	30.8%	19.2%	19.2%	19.2%	23.1%	11.5%
SFY 2021	07/20-06/21	--- <sup>2</sup>	17.6%	11.8%	11.8%	29.4%	11.8%	5.9%	29.4%	29.4%	17.6%	11.8%
SFY 2022	07/21-06/22	--- <sup>2</sup>	0.0%	0.0%	0.0%	27.3%	36.4%	36.4%	Data not available			
<b>SPOKANE</b>												
SFY 2019	07/18-06/19	--- <sup>2</sup>	13.7%	15.7%	13.7%	15.7%	19.6%	23.5%	9.8%	9.8%	9.8%	9.8%
SFY 2020	07/19-06/20	--- <sup>2</sup>	3.8%	1.9%	7.7%	25.0%	23.1%	21.2%	15.4%	11.5%	15.4%	13.5%
SFY 2021	07/20-06/21	--- <sup>2</sup>	3.4%	6.9%	3.4%	6.9%	12.1%	12.1%	8.6%	5.2%	5.2%	5.2%
SFY 2022	07/21-06/22	--- <sup>2</sup>	1.9%	3.8%	3.8%	7.5%	11.3%	5.7%	Data not available			
<b>THURSTON-MASON</b>												
SFY 2019	07/18-06/19	--- <sup>2</sup>	25.0%	20.0%	10.0%	30.0%	20.0%	0.0%	25.0%	15.0%	20.0%	10.0%
SFY 2020	07/19-06/20	--- <sup>2</sup>	10.3%	10.3%	13.8%	31.0%	37.9%	24.1%	24.1%	20.7%	13.8%	10.3%
SFY 2021	07/20-06/21	--- <sup>2</sup>	15.8%	15.8%	21.1%	31.6%	36.8%	42.1%	31.6%	26.3%	21.1%	26.3%
SFY 2022	07/21-06/22	--- <sup>2</sup>	5.3%	10.5%	21.1%	31.6%	21.1%	31.6%	Data not available			

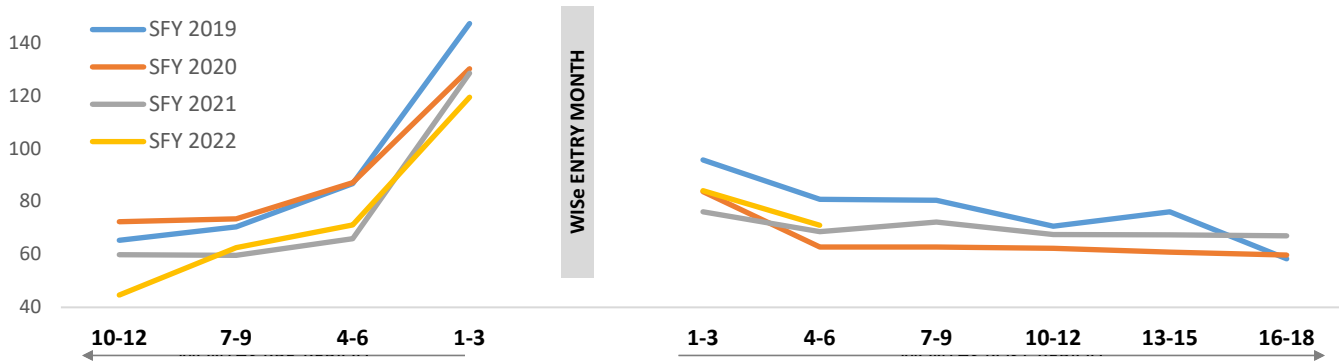
**Notes.** <sup>1</sup>Primary suppression: To protect the privacy of individuals, cells in this data product that represent 10 or fewer persons are not displayed. <sup>2</sup>Secondary suppression: Some additional numbers representing more than 10 persons have also been suppressed to ensure that cells representing 10 or fewer persons cannot be calculated.

# WISe Outcomes

NOVEMBER 2023

## Emergency Department Visits

Emergency Department Visits (days per 1,000 mm) During the Period



Cohort	Entered Wise	N	MONTHS PRE-PERIOD				MONTHS POST PERIOD					
			10-12	7-9	4-6	1-3	1-3	4-6	7-9	10-12	13-15	16-18
<b>WASHINGTON</b>												
ED Visits (days per 1,000 mm) During the Period												
SFY 2019	07/18-06/19	2,695	65.3	70.5	86.7	147.2	95.7	80.8	80.5	70.6	76.0	58.3
SFY 2020	07/19-06/20	3,178	72.4	73.4	87.1	130.2	83.7	62.8	62.8	62.3	60.9	59.8
SFY 2021	07/20-06/21	2,867	59.9	59.7	65.9	128.5	76.1	68.6	72.2	67.5	67.4	67.1
SFY 2022	07/21-06/22	---	44.6	62.5	71.2	119.4	84.1	71.0	Data not available			
<b>REGIONS</b>												
Entered Wise												
<b>GREAT RIVERS</b>												
SFY 2019	07/18-06/19	---	45.5	28.3	53.1	96.7	64.4	56.0	64.0	51.2	64.9	38.1
SFY 2020	07/19-06/20	---	71.4	70.0	63.2	100.2	60.0	47.1	55.1	48.0	59.8	65.1
SFY 2021	07/20-06/21	---	73.7	58.6	61.7	109.5	59.8	84.4	72.5	56.1	54.6	52.2
SFY 2022	07/21-06/22	---	46.4	38.8	50.3	89.7	68.8	51.3	Data not available			
<b>GREATER COLUMBIA</b>												
SFY 2019	07/18-06/19	---	92.6	80.3	101.1	189.1	108.5	99.4	109.7	84.2	89.3	72.6
SFY 2020	07/19-06/20	---	77.2	110.7	94.4	138.2	96.6	77.9	71.9	78.1	66.8	73.7
SFY 2021	07/20-06/21	---	67.3	64.1	51.7	129.0	78.9	75.1	81.5	76.6	79.0	82.2
SFY 2022	07/21-06/22	---	45.8	66.5	65.3	118.5	84.0	76.2	Data not available			
<b>KING COUNTY</b>												
SFY 2019	07/18-06/19	---	61.8	67.4	96.9	136.5	95.4	84.5	62.7	79.3	83.3	71.5
SFY 2020	07/19-06/20	---	70.4	58.4	76.7	88.6	55.3	44.6	40.1	34.6	47.4	45.2
SFY 2021	07/20-06/21	---	58.2	57.5	73.5	128.2	100.7	81.6	84.5	66.7	97.9	56.8
SFY 2022	07/21-06/22	---	54.2	76.7	79.1	100.5	75.8	72.7	Data not available			
<b>NORTH CENTRAL</b>												
SFY 2019	07/18-06/19	---	32.1	45.6	53.2	120.4	82.8	61.3	50.5	52.0	37.4	36.0
SFY 2020	07/19-06/20	---	74.6	75.8	60.4	179.0	76.3	97.6	122.0	102.9	106.8	59.1
SFY 2021	07/20-06/21	---	52.6	55.6	72.2	110.0	88.4	71.4	79.0	58.4	58.4	75.6
SFY 2022	07/21-06/22	---	61.2	100.9	84.8	91.4	129.8	112.1	Data not available			
<b>NORTH SOUND</b>												
SFY 2019	07/18-06/19	---	49.9	71.9	94.5	129.5	96.1	69.7	68.4	53.5	66.0	55.0
SFY 2020	07/19-06/20	---	74.3	78.9	83.7	138.8	79.0	65.8	63.3	72.6	72.1	65.4
SFY 2021	07/20-06/21	---	62.8	60.4	69.9	115.6	69.3	58.0	55.3	60.6	57.6	51.6
SFY 2022	07/21-06/22	---	54.3	78.1	122.3	138.1	81.6	73.0	Data not available			

# WISe Outcomes

NOVEMBER 2023

PIERCE												
SFY 2019	07/18-06/19	--- <sup>2</sup>	63.9	68.7	57.6	144.4	75.4	58.0	99.5	81.2	90.1	67.7
SFY 2020	07/19-06/20	--- <sup>2</sup>	61.1	55.9	87.2	132.4	95.8	64.7	54.8	75.7	57.6	85.0
SFY 2021	07/20-06/21	--- <sup>2</sup>	59.3	58.7	70.2	144.6	84.4	70.7	68.1	66.8	51.5	93.8
SFY 2022	07/21-06/22	--- <sup>2</sup>	31.3	63.2	61.1	169.2	83.7	70.2	<i>Data not available</i>			
SALISH												
SFY 2019	07/18-06/19	--- <sup>2</sup>	60.0	73.0	109.3	158.6	142.9	105.5	89.6	68.5	109.2	42.6
SFY 2020	07/19-06/20	--- <sup>2</sup>	86.7	81.6	112.5	166.7	108.3	51.9	76.9	67.3	72.2	43.1
SFY 2021	07/20-06/21	--- <sup>2</sup>	47.9	45.9	90.2	136.6	87.2	66.7	70.8	57.9	46.3	56.7
SFY 2022	07/21-06/22	--- <sup>2</sup>	41.1	36.5	56.3	102.2	64.0	65.2	<i>Data not available</i>			
SOUTHWEST												
SFY 2019	07/18-06/19	--- <sup>2</sup>	44.0	72.0	65.1	144.4	59.3	64.8	81.0	51.4	51.6	42.4
SFY 2020	07/19-06/20	--- <sup>2</sup>	54.9	43.7	88.7	126.1	91.5	62.5	62.8	64.9	52.0	18.2
SFY 2021	07/20-06/21	--- <sup>2</sup>	61.4	55.6	94.9	157.8	75.5	56.2	76.3	64.3	73.6	63.3
SFY 2022	07/21-06/22	--- <sup>2</sup>	37.0	78.8	72.8	106.0	98.2	72.1	<i>Data not available</i>			
SPOKANE												
SFY 2019	07/18-06/19	--- <sup>2</sup>	92.4	94.5	106.2	182.9	120.1	102.9	82.9	91.4	76.4	69.5
SFY 2020	07/19-06/20	--- <sup>2</sup>	80.0	80.8	93.4	150.3	100.7	68.0	79.2	67.1	56.2	68.0
SFY 2021	07/20-06/21	--- <sup>2</sup>	61.3	64.9	59.3	145.3	74.7	68.2	78.4	96.6	91.3	71.8
SFY 2022	07/21-06/22	--- <sup>2</sup>	39.9	60.3	55.6	125.5	109.5	79.1	<i>Data not available</i>			
THURSTON-MASON												
SFY 2019	07/18-06/19	--- <sup>2</sup>	68.9	78.5	92.6	109.4	82.7	83.3	76.1	57.8	61.1	39.9
SFY 2020	07/19-06/20	--- <sup>2</sup>	72.3	67.1	102.3	142.9	88.5	72.4	60.1	47.6	55.6	49.9
SFY 2021	07/20-06/21	--- <sup>2</sup>	36.9	62.0	43.4	104.3	54.2	48.8	61.9	42.0	38.8	66.4
SFY 2022	07/21-06/22	--- <sup>2</sup>	41.2	51.1	79.1	125.4	51.3	55.3	<i>Data not available</i>			

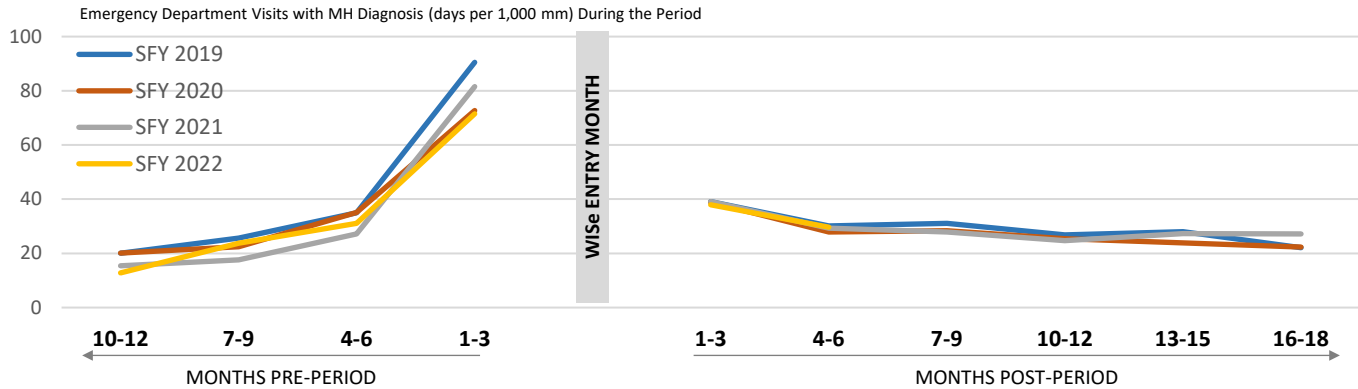
**Notes.** <sup>1</sup>Primary suppression: To protect the privacy of individuals, cells in this data product that represent 10 or fewer persons are not displayed.

<sup>2</sup>Secondary suppression: Some additional numbers representing more than 10 persons have also been suppressed to ensure that cells representing 10 or fewer persons cannot be calculated.

# WISe Outcomes

NOVEMBER 2023

## Emergency Department Visits with Mental Health Diagnosis



Cohort	Entered Wise	N	MONTHS PRE-PERIOD				MONTHS POST PERIOD					
			10-12	7-9	4-6	1-3	1-3	4-6	7-9	10-12	13-15	16-18
<b>WASHINGTON</b>												
ED Visits with MH Diagnosis (days per 1,000 mm) During the Period												
SFY 2019	07/18-06/19	2,695	20.1	25.7	35.0	90.5	39.1	30.1	31.1	26.9	28.0	22.1
SFY 2020	07/19-06/20	3,178	20.1	22.4	35.1	72.7	38.9	27.9	28.4	25.4	23.8	22.4
SFY 2021	07/20-06/21	2,867	15.4	17.7	27.1	81.5	39.1	29.3	27.9	24.7	27.3	27.2
SFY 2022	07/21-06/22	---	12.8	23.7	31.1	71.5	37.9	29.6	Data not available			
<b>REGIONS</b>												
<b>GREAT RIVERS</b>												
SFY 2019	07/18-06/19	---	9.1	8.9	20.6	51.9	27.2	18.7	26.2	19.0	30.2	21.3
SFY 2020	07/19-06/20	---	14.6	28.5	23.0	57.8	19.6	9.9	23.8	29.0	30.5	16.9
SFY 2021	07/20-06/21	---	8.2	12.5	16.8	60.4	26.7	33.1	16.2	17.6	26.8	14.6
SFY 2022	07/21-06/22	---	14.8	12.6	24.6	61.1	23.6	17.8	Data not available			
<b>GREATER COLUMBIA</b>												
SFY 2019	07/18-06/19	---	19.0	19.8	19.9	75.2	23.8	28.1	18.4	24.1	18.0	17.6
SFY 2020	07/19-06/20	---	15.3	20.2	20.8	59.8	22.2	28.0	28.1	21.7	18.7	24.6
SFY 2021	07/20-06/21	---	11.3	13.9	12.0	78.0	35.0	34.9	25.1	16.2	17.3	21.2
SFY 2022	07/21-06/22	---	9.7	15.4	20.7	56.9	28.3	22.0	Data not available			
<b>KING COUNTY</b>												
SFY 2019	07/18-06/19	---	29.4	18.0	53.4	86.4	40.5	28.9	37.9	41.1	38.3	27.5
SFY 2020	07/19-06/20	---	14.8	15.3	27.3	36.6	20.4	12.8	17.4	11.1	17.1	13.9
SFY 2021	07/20-06/21	---	17.2	16.6	31.9	73.4	44.0	39.6	46.9	29.8	30.4	21.0
SFY 2022	07/21-06/22	---	20.7	34.4	38.8	62.4	39.4	36.4	Data not available			
<b>NORTH CENTRAL</b>												
SFY 2019	07/18-06/19	---	9.9	24.0	16.2	81.0	34.5	18.5	20.0	11.8	0.0	2.4
SFY 2020	07/19-06/20	---	35.1	43.3	20.8	125.5	48.2	52.8	69.1	70.0	51.3	29.5
SFY 2021	07/20-06/21	---	17.5	20.8	34.4	53.3	27.2	30.6	17.2	27.5	24.1	17.2
SFY 2022	07/21-06/22	---	33.6	58.1	45.5	59.0	82.6	59.0	Data not available			
<b>NORTH SOUND</b>												
SFY 2019	07/18-06/19	---	16.6	37.3	47.2	91.5	41.6	39.9	36.0	25.0	33.0	22.5
SFY 2020	07/19-06/20	---	28.6	32.1	37.3	83.1	41.4	41.6	29.7	27.5	25.6	31.2
SFY 2021	07/20-06/21	---	25.2	25.4	44.9	83.5	42.1	25.9	23.7	21.5	24.3	17.2

# WISe Outcomes

NOVEMBER 2023

## Emergency Department Visits with Mental Health Diagnosis

SFY 2022	07/21-06/22	--- <sup>2</sup>	12.8	39.6	71.4	85.3	39.3	28.6	Data not available			
<b>PIERCE</b>												
SFY 2019	07/18-06/19	--- <sup>2</sup>	16.6	25.0	7.3	111.5	30.6	19.3	28.1	28.1	32.1	28.8
SFY 2020	07/19-06/20	--- <sup>2</sup>	11.8	10.7	27.1	64.4	47.9	28.2	24.7	26.8	14.9	29.7
SFY 2021	07/20-06/21	--- <sup>2</sup>	15.4	17.8	24.0	87.6	50.2	24.7	30.5	18.8	22.4	46.3
SFY 2022	07/21-06/22	--- <sup>2</sup>	10.9	30.9	29.2	123.6	35.5	28.1	Data not available			
<b>SALISH</b>												
SFY 2019	07/18-06/19	--- <sup>2</sup>	15.2	28.1	36.4	85.1	61.7	45.2	35.8	25.9	41.4	20.8
SFY 2020	07/19-06/20	--- <sup>2</sup>	23.8	18.7	41.9	104.6	62.3	23.6	38.5	31.2	32.8	21.6
SFY 2021	07/20-06/21	--- <sup>2</sup>	9.6	9.4	25.8	89.3	32.5	25.6	20.7	12.3	14.3	14.2
SFY 2022	07/21-06/22	--- <sup>2</sup>	1.6	1.6	14.1	44.4	20.4	20.7	Data not available			
<b>SOUTHWEST</b>												
SFY 2019	07/18-06/19	--- <sup>2</sup>	11.2	19.7	36.4	107.4	29.6	25.9	47.1	24.8	25.8	20.2
SFY 2020	07/19-06/20	--- <sup>2</sup>	15.2	14.6	60.3	89.8	67.4	41.7	43.6	31.6	21.5	10.9
SFY 2021	07/20-06/21	--- <sup>2</sup>	15.4	27.8	46.4	118.3	43.1	36.1	32.1	38.2	34.8	44.3
SFY 2022	07/21-06/22	--- <sup>2</sup>	13.9	33.8	30.9	56.3	65.1	54.1	Data not available			
<b>SPOKANE</b>												
SFY 2019	07/18-06/19	--- <sup>2</sup>	33.0	38.5	50.4	127.9	61.8	36.4	31.3	33.2	25.1	29.1
SFY 2020	07/19-06/20	--- <sup>2</sup>	36.5	30.9	44.2	96.3	56.8	33.0	25.4	32.5	30.3	31.2
SFY 2021	07/20-06/21	--- <sup>2</sup>	19.2	16.8	25.0	92.9	46.8	28.8	32.7	44.4	47.2	32.0
SFY 2022	07/21-06/22	--- <sup>2</sup>	11.5	18.7	16.0	72.1	51.2	34.6	Data not available			
<b>THURSTON-MASON</b>												
SFY 2019	07/18-06/19	--- <sup>2</sup>	27.5	33.1	52.9	57.3	36.2	33.9	35.4	16.1	25.0	11.4
SFY 2020	07/19-06/20	--- <sup>2</sup>	16.3	25.0	57.2	86.6	38.8	31.0	29.5	18.8	25.6	12.5
SFY 2021	07/20-06/21	--- <sup>2</sup>	8.8	17.3	19.9	71.3	29.8	14.9	27.2	16.8	21.6	47.6
SFY 2022	07/21-06/22	--- <sup>2</sup>	10.8	17.6	33.7	80.9	22.4	23.2	Data not available			

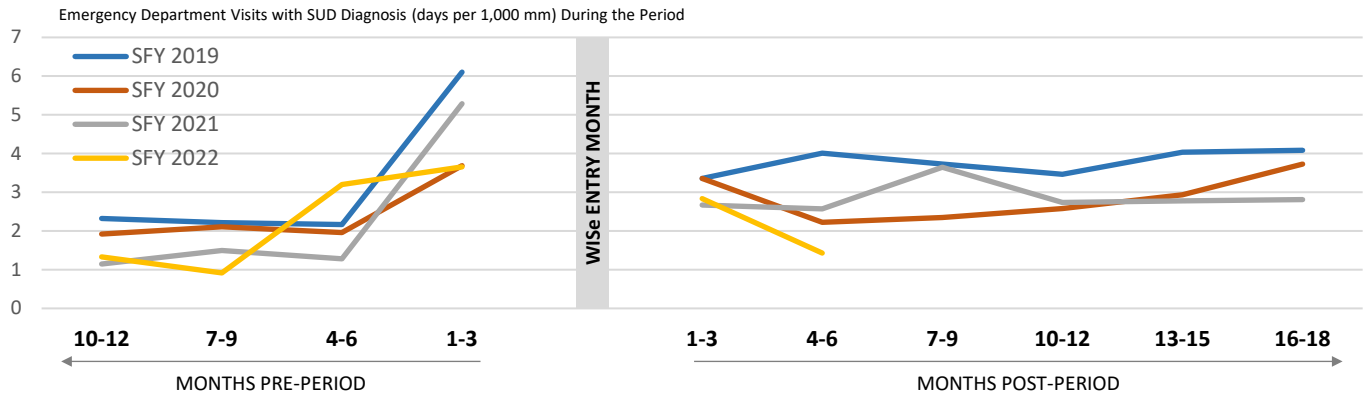
**Notes.** <sup>1</sup>Primary suppression: To protect the privacy of individuals, cells in this data product that represent 10 or fewer persons are not displayed.

<sup>2</sup>Secondary suppression: Some additional numbers representing more than 10 persons have also been suppressed to ensure that cells representing 10 or fewer persons cannot be calculated.

# WISe Outcomes

NOVEMBER 2023

## Emergency Department Visits with Substance Use Disorder Diagnosis



Cohort	Entered Wise	N	MONTHS PRE-PERIOD				MONTHS POST PERIOD					
			10-12	7-9	4-6	1-3	1-3	4-6	7-9	10-12	13-15	16-18
<b>WASHINGTON</b>												
ED Visits with SUD Diagnosis (days per 1,000 mm) During the Period												
SFY 2019	07/18-06/19	2,695	2.3	2.2	2.2	6.1	3.4	4.0	3.7	3.5	4.0	4.1
SFY 2020	07/19-06/20	3,178	1.9	2.1	2.0	3.7	3.4	2.2	2.3	2.6	2.9	3.7
SFY 2021	07/20-06/21	2,867	1.1	1.5	1.3	5.3	2.7	2.6	3.7	2.7	2.8	2.8
SFY 2022	07/21-06/22	--- <sup>2</sup>	1.3	0.9	3.2	3.7	2.8	1.4	Data not available			
<b>REGIONS</b>												
Entered Wise												
<b>GREAT RIVERS</b>												
SFY 2019	07/18-06/19	--- <sup>2</sup>	0.0	1.5	0.0	4.3	1.4	1.4	1.5	1.5	0.0	1.5
SFY 2020	07/19-06/20	--- <sup>2</sup>	0.0	1.3	0.0	1.2	0.0	0.0	2.5	3.8	3.8	0.0
SFY 2021	07/20-06/21	--- <sup>2</sup>	1.2	2.3	0.0	10.8	5.3	2.1	2.2	2.2	4.5	4.5
SFY 2022	07/21-06/22	--- <sup>2</sup>	0.0	0.0	1.0	1.0	2.9	0.0	Data not available			
<b>GREATER COLUMBIA</b>												
SFY 2019	07/18-06/19	--- <sup>2</sup>	5.2	1.7	3.4	10.6	2.5	5.8	0.8	5.1	6.0	5.3
SFY 2020	07/19-06/20	--- <sup>2</sup>	0.0	2.5	1.6	6.3	8.7	4.8	4.0	1.6	3.3	6.6
SFY 2021	07/20-06/21	--- <sup>2</sup>	1.9	0.9	0.9	5.4	0.9	5.4	4.5	1.8	1.8	2.8
SFY 2022	07/21-06/22	--- <sup>2</sup>	1.9	1.9	2.8	1.8	3.7	3.7	Data not available			
<b>KING COUNTY</b>												
SFY 2019	07/18-06/19	--- <sup>2</sup>	2.0	1.9	1.9	1.9	1.9	3.7	4.7	2.9	8.6	4.8
SFY 2020	07/19-06/20	--- <sup>2</sup>	0.7	0.7	5.2	2.5	1.3	0.6	1.9	0.0	1.3	2.0
SFY 2021	07/20-06/21	--- <sup>2</sup>	0.0	0.0	1.2	4.7	6.9	3.5	4.7	2.4	2.4	3.7
SFY 2022	07/21-06/22	--- <sup>2</sup>	3.2	4.7	12.4	10.7	3.0	0.0	Data not available			
<b>NORTH CENTRAL</b>												
SFY 2019	07/18-06/19	--- <sup>2</sup>	0.0	4.8	0.0	6.9	2.3	0.0	9.4	2.4	0.0	2.4
SFY 2020	07/19-06/20	--- <sup>2</sup>	8.8	8.7	0.0	4.1	4.0	0.0	20.3	8.2	0.0	0.0
SFY 2021	07/20-06/21	--- <sup>2</sup>	0.0	3.5	0.0	3.4	0.0	0.0	6.9	3.4	3.4	0.0
SFY 2022	07/21-06/22	--- <sup>2</sup>	6.1	0.0	0.0	8.8	0.0	0.0	Data not available			
<b>NORTH SOUND</b>												
SFY 2019	07/18-06/19	--- <sup>2</sup>	0.9	0.9	1.8	2.6	2.6	2.6	2.6	0.9	0.9	1.8
SFY 2020	07/19-06/20	--- <sup>2</sup>	5.7	4.9	0.0	3.0	0.0	3.8	0.8	3.8	3.9	4.7
SFY 2021	07/20-06/21	--- <sup>2</sup>	0.0	3.3	2.9	2.4	1.6	0.8	1.6	2.4	3.2	1.6

# WISe Outcomes

NOVEMBER 2023

## Emergency Department Visits with Substance Use Disorder Diagnosis

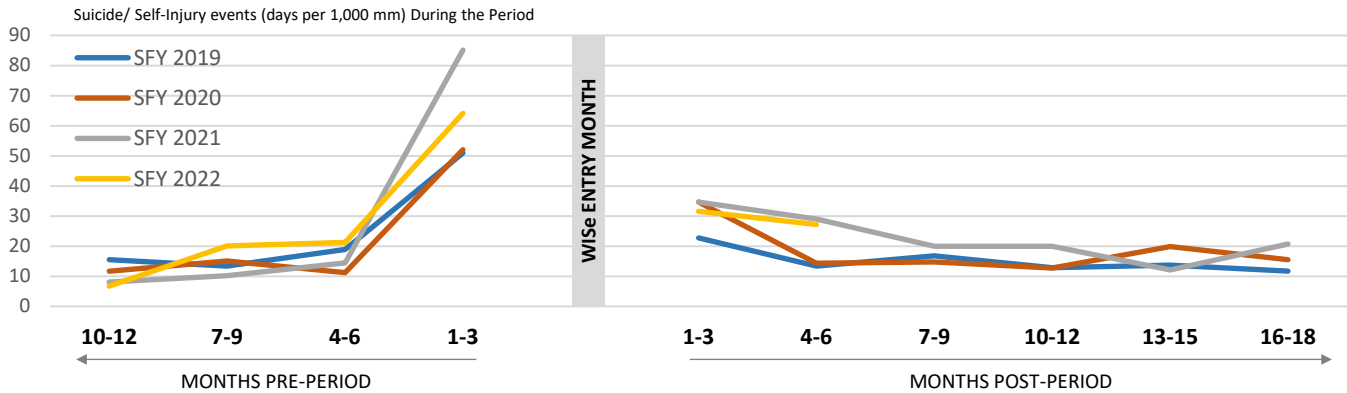
SFY 2022	07/21-06/22	--- <sup>2</sup>	1.1	0.0	6.1	8.4	5.9	0.0	<i>Data not available</i>			
<b>PIERCE</b>												
SFY 2019	07/18-06/19	--- <sup>2</sup>	1.3	3.7	3.6	9.4	3.5	3.6	8.5	3.7	2.5	1.3
SFY 2020	07/19-06/20	--- <sup>2</sup>	3.0	2.9	1.9	4.6	2.7	0.0	0.9	1.8	0.9	4.2
SFY 2021	07/20-06/21	--- <sup>2</sup>	1.2	0.0	1.1	3.2	6.4	3.2	8.7	4.4	0.0	3.4
SFY 2022	07/21-06/22	--- <sup>2</sup>	2.7	0.0	6.6	2.5	2.5	2.6	<i>Data not available</i>			
<b>SALISH</b>												
SFY 2019	07/18-06/19	--- <sup>2</sup>	0.0	0.0	3.6	9.0	7.1	7.1	5.4	5.6	5.6	3.8
SFY 2020	07/19-06/20	--- <sup>2</sup>	5.1	0.0	0.0	6.3	3.1	3.1	1.6	1.6	1.6	5.0
SFY 2021	07/20-06/21	--- <sup>2</sup>	0.0	1.9	0.0	6.9	0.0	0.0	0.0	1.8	0.0	1.8
SFY 2022	07/21-06/22	--- <sup>2</sup>	0.0	0.0	0.0	3.0	0.0	0.0	<i>Data not available</i>			
<b>SOUTHWEST</b>												
SFY 2019	07/18-06/19	--- <sup>2</sup>	0.0	0.0	3.8	5.6	1.9	0.0	0.0	0.0	0.0	4.0
SFY 2020	07/19-06/20	--- <sup>2</sup>	0.0	1.8	3.5	6.9	3.5	1.7	3.5	7.0	10.8	3.6
SFY 2021	07/20-06/21	--- <sup>2</sup>	2.2	0.0	0.0	13.8	2.0	2.0	6.0	2.0	8.2	10.5
SFY 2022	07/21-06/22	--- <sup>2</sup>	0.0	0.0	2.2	0.0	2.2	2.3	<i>Data not available</i>			
<b>SPOKANE</b>												
SFY 2019	07/18-06/19	--- <sup>2</sup>	6.2	5.7	0.9	8.1	7.2	6.3	4.1	7.4	7.4	9.4
SFY 2020	07/19-06/20	--- <sup>2</sup>	1.0	2.0	2.0	3.9	8.7	4.9	2.0	3.0	3.0	3.5
SFY 2021	07/20-06/21	--- <sup>2</sup>	3.3	1.6	2.3	5.4	0.8	3.0	3.0	3.8	1.5	1.6
SFY 2022	07/21-06/22	--- <sup>2</sup>	0.8	0.7	0.7	2.8	3.5	2.1	<i>Data not available</i>			
<b>THURSTON-MASON</b>												
SFY 2019	07/18-06/19	--- <sup>2</sup>	2.8	0.0	2.6	0.0	2.6	7.8	2.6	2.7	2.8	2.8
SFY 2020	07/19-06/20	--- <sup>2</sup>	0.0	0.0	2.2	0.0	2.2	1.1	0.0	2.2	2.2	4.5
SFY 2021	07/20-06/21	--- <sup>2</sup>	0.0	1.4	1.4	0.0	1.4	2.7	1.4	2.8	5.7	0.0
SFY 2022	07/21-06/22	--- <sup>2</sup>	0.0	1.8	0.0	0.0	0.0	2.4	<i>Data not available</i>			

**Notes.** <sup>1</sup>Primary suppression: To protect the privacy of individuals, cells in this data product that represent 10 or fewer persons are not displayed. <sup>2</sup>Secondary suppression: Some additional numbers representing more than 10 persons have also been suppressed to ensure that cells representing 10 or fewer persons cannot be calculated.

# WISe Outcomes

NOVEMBER 2023

## Suicide/Self-Injury Diagnoses



Cohort	Entered Wise	N	MONTHS PRE-PERIOD				MONTHS POST PERIOD					
			10-12	7-9	4-6	1-3	1-3	4-6	7-9	10-12	13-15	16-18
<b>WASHINGTON</b> <i>Entered Wise</i>												
Suicide / Self-injury Events (days per 1,000 mm) During the Period												
SFY 2019	07/18-06/19	2,695	15.5	13.4	18.9	50.9	22.8	13.4	16.8	12.8	13.7	11.7
SFY 2020	07/19-06/20	3,178	11.6	15.1	11.2	52.1	34.7	14.3	14.7	12.7	19.9	15.5
SFY 2021	07/20-06/21	2,867	8.1	10.2	14.4	85.1	34.6	29.0	20.0	20.0	12.1	20.7
SFY 2022	07/21-06/22	---	6.7	20.0	21.2	64.1	31.6	27.2	Data not available			
<b>REGIONS</b> <i>Entered Wise</i>												
<b>GREAT RIVERS</b>												
SFY 2019	07/18-06/19	---	10.6	4.5	7.4	33.2	11.4	4.3	5.8	2.9	21.1	7.6
SFY 2020	07/19-06/20	---	6.6	18.2	8.9	25.8	6.1	5.0	13.8	27.8	10.2	23.4
SFY 2021	07/20-06/21	---	1.2	0.0	2.2	32.4	7.5	13.9	5.4	5.5	8.9	6.7
SFY 2022	07/21-06/22	---	7.4	13.6	11.3	51.3	10.8	2.0	Data not available			
<b>GREATER COLUMBIA</b>												
SFY 2019	07/18-06/19	---	17.3	13.7	21.6	35.9	9.8	21.5	11.7	8.5	2.6	6.2
SFY 2020	07/19-06/20	---	5.1	24.7	9.8	41.2	14.3	10.4	12.0	6.4	16.3	8.2
SFY 2021	07/20-06/21	---	2.8	5.6	7.4	62.7	17.7	17.0	4.5	8.1	6.4	7.4
SFY 2022	07/21-06/22	---	1.9	7.7	19.7	27.5	13.7	12.9	Data not available			
<b>KING COUNTY</b>												
SFY 2019	07/18-06/19	---	9.8	19.9	26.2	34.4	22.3	9.3	22.0	31.5	24.9	22.2
SFY 2020	07/19-06/20	---	2.7	4.6	11.0	22.0	8.9	1.3	3.9	10.5	8.6	2.7
SFY 2021	07/20-06/21	---	9.3	10.2	23.3	28.0	24.3	25.6	14.1	13.1	13.4	24.7
SFY 2022	07/21-06/22	---	6.4	6.3	14.0	83.7	39.4	27.3	Data not available			
<b>NORTH CENTRAL</b>												
SFY 2019	07/18-06/19	---	9.9	4.8	4.6	37.0	25.3	57.9	7.0	7.1	0.0	2.4
SFY 2020	07/19-06/20	---	13.2	17.3	4.2	57.6	84.3	69.1	40.7	24.7	89.7	46.4
SFY 2021	07/20-06/21	---	10.5	6.9	44.7	82.5	6.8	3.4	6.9	6.9	13.7	3.4
SFY 2022	07/21-06/22	---	6.1	42.8	51.5	82.6	32.4	44.2	Data not available			
<b>NORTH SOUND</b>												
SFY 2019	07/18-06/19	---	16.6	13.5	33.0	40.2	19.0	14.0	13.2	8.0	6.2	22.5
SFY 2020	07/19-06/20	---	22.9	20.3	16.5	43.6	15.0	31.0	9.2	16.1	10.9	24.1
SFY 2021	07/20-06/21	---	21.8	6.7	16.3	90.3	36.6	14.9	15.0	13.6	8.1	10.6



# WISe Outcomes

NOVEMBER 2023

## Suicide/Self-Injury Diagnoses

SFY 2022	07/21-06/22	--- <sup>2</sup>	8.0	17.7	18.3	55.2	35.4	61.1	<i>Data not available</i>			
<b>PIERCE</b>												
SFY 2019	07/18-06/19	--- <sup>2</sup>	3.8	11.2	6.1	61.6	14.1	6.0	6.1	3.7	13.6	12.5
SFY 2020	07/19-06/20	--- <sup>2</sup>	17.8	2.9	5.8	32.4	47.0	11.8	11.0	10.2	29.7	23.2
SFY 2021	07/20-06/21	--- <sup>2</sup>	7.1	3.6	4.6	90.3	32.1	12.9	26.7	7.7	9.5	22.6
SFY 2022	07/21-06/22	--- <sup>2</sup>	13.6	13.4	10.6	80.5	34.2	37.0	<i>Data not available</i>			
<b>SALISH</b>												
SFY 2019	07/18-06/19	--- <sup>2</sup>	1.9	0.0	5.5	19.7	12.3	3.5	12.5	9.3	9.4	1.9
SFY 2020	07/19-06/20	--- <sup>2</sup>	1.7	0.0	1.6	44.0	26.5	9.4	12.8	11.5	13.1	8.3
SFY 2021	07/20-06/21	--- <sup>2</sup>	3.8	5.6	1.8	80.8	44.4	32.5	34.5	1.8	10.7	1.8
SFY 2022	07/21-06/22	--- <sup>2</sup>	3.3	11.1	17.2	17.8	24.7	13.3	<i>Data not available</i>			
<b>SOUTHWEST</b>												
SFY 2019	07/18-06/19	--- <sup>2</sup>	2.0	0.0	13.4	31.5	51.9	3.7	7.5	1.9	6.9	4.0
SFY 2020	07/19-06/20	--- <sup>2</sup>	13.3	3.6	10.6	44.9	38.0	12.2	19.2	1.8	21.5	1.8
SFY 2021	07/20-06/21	--- <sup>2</sup>	4.4	19.2	27.4	98.6	66.7	12.0	24.1	30.1	14.3	54.9
SFY 2022	07/21-06/22	--- <sup>2</sup>	0.0	9.0	6.6	59.6	28.7	20.3	<i>Data not available</i>			
<b>SPOKANE</b>												
SFY 2019	07/18-06/19	--- <sup>2</sup>	44.5	31.8	28.4	133.3	43.0	10.8	46.2	29.5	27.9	13.1
SFY 2020	07/19-06/20	--- <sup>2</sup>	26.3	36.9	21.6	166.7	142.6	19.4	42.0	17.8	46.8	20.1
SFY 2021	07/20-06/21	--- <sup>2</sup>	10.6	23.2	22.6	188.8	77.7	100.0	34.2	62.8	16.2	40.6
SFY 2022	07/21-06/22	--- <sup>2</sup>	9.2	53.9	29.8	110.4	61.8	38.1	<i>Data not available</i>			
<b>THURSTON-MASON</b>												
SFY 2019	07/18-06/19	--- <sup>2</sup>	16.5	8.3	13.2	36.5	28.4	15.6	17.1	5.4	16.7	2.8
SFY 2020	07/19-06/20	--- <sup>2</sup>	5.8	15.9	11.0	56.3	14.0	13.1	10.9	8.9	8.9	18.1
SFY 2021	07/20-06/21	--- <sup>2</sup>	1.5	20.2	12.8	47.3	10.8	6.8	34.0	26.6	25.9	33.2
SFY 2022	07/21-06/22	--- <sup>2</sup>	7.2	7.1	45.5	59.9	19.2	11.2	<i>Data not available</i>			

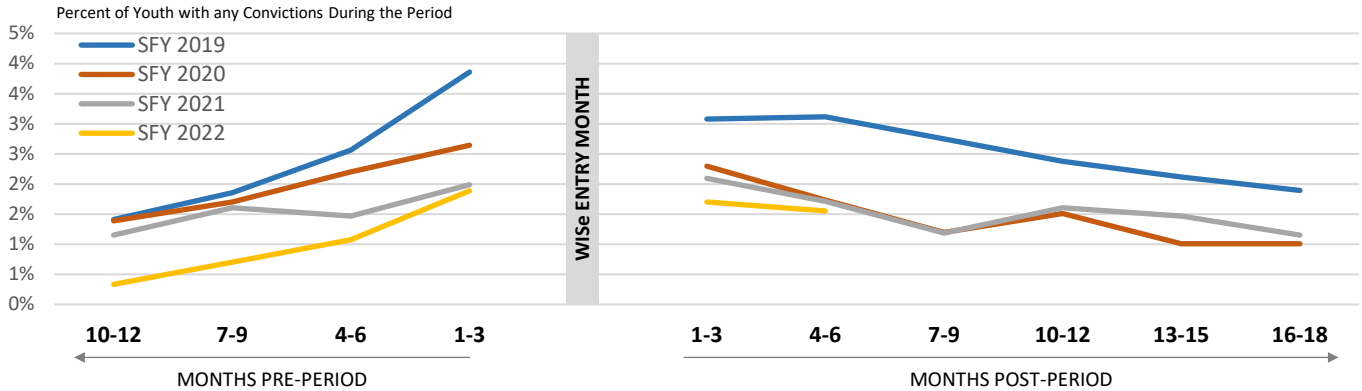
**Notes.** <sup>1</sup>Primary suppression: To protect the privacy of individuals, cells in this data product that represent 10 or fewer persons are not displayed.

<sup>2</sup>Secondary suppression: Some additional numbers representing more than 10 persons have also been suppressed to ensure that cells representing 10 or fewer persons cannot be calculated.

# WISe Outcomes

NOVEMBER 2023

## Juvenile Criminal Convictions



Cohort	Entered Wise	N	MONTHS PRE-PERIOD				MONTHS POST PERIOD					
			10-12	7-9	4-6	1-3	1-3	4-6	7-9	10-12	13-15	16-18
<b>WASHINGTON</b>												
Percent of Youth with any Convictions During the Period												
SFY 2019	07/18-06/19	2,695	1.4%	1.9%	2.6%	3.9%	3.1%	3.1%	2.7%	2.4%	2.1%	1.9%
SFY 2020	07/19-06/20	3,178	1.4%	1.7%	2.2%	2.6%	2.3%	1.7%	1.2%	1.5%	1.0%	1.0%
SFY 2021	07/20-06/21	2,867	1.2%	1.6%	1.5%	2.0%	2.1%	1.7%	1.2%	1.6%	1.5%	1.2%
SFY 2022	07/21-06/22	---	0.3%	0.7%	1.1%	1.9%	1.7%	1.6%	Data not available			
<b>REGIONS</b>												
Entered Wise												
<b>GREAT RIVERS</b>												
SFY 2019	07/18-06/19	---	1.7%	2.1%	6.4%	5.1%	2.6%	4.7%	3.4%	3.4%	3.8%	1.3%
SFY 2020	07/19-06/20	---	0.4%	3.3%	1.1%	1.1%	2.2%	2.6%	1.5%	1.1%	1.1%	1.5%
SFY 2021	07/20-06/21	---	1.0%	1.9%	1.0%	2.9%	1.3%	1.6%	1.0%	1.3%	1.0%	1.6%
SFY 2022	07/21-06/22	---	0.0%	0.6%	0.3%	2.9%	1.5%	2.1%	Data not available			
<b>GREATER COLUMBIA</b>												
SFY 2019	07/18-06/19	---	3.2%	3.7%	6.6%	6.1%	5.9%	5.4%	4.9%	4.2%	4.6%	4.9%
SFY 2020	07/19-06/20	---	3.1%	4.0%	4.7%	5.2%	4.7%	3.8%	1.7%	2.6%	1.2%	1.9%
SFY 2021	07/20-06/21	---	1.3%	2.7%	2.9%	2.4%	3.7%	3.2%	1.6%	3.2%	2.9%	1.6%
SFY 2022	07/21-06/22	---	1.1%	1.9%	1.9%	2.5%	3.3%	3.6%	Data not available			
<b>KING COUNTY</b>												
SFY 2019	07/18-06/19	---	0.8%	1.4%	0.8%	1.9%	1.7%	1.7%	1.4%	0.8%	0.8%	0.8%
SFY 2020	07/19-06/20	---	1.0%	0.4%	1.1%	0.6%	0.4%	0.2%	0.2%	0.0%	0.2%	0.4%
SFY 2021	07/20-06/21	---	0.3%	0.3%	0.3%	0.3%	0.7%	0.3%	1.0%	0.0%	0.3%	0.7%
SFY 2022	07/21-06/22	---	0.9%	0.5%	0.0%	0.0%	0.9%	0.5%	Data not available			
<b>NORTH CENTRAL</b>												
SFY 2019	07/18-06/19	---	0.0%	0.7%	0.0%	4.8%	3.4%	2.1%	2.1%	3.4%	2.1%	0.7%
SFY 2020	07/19-06/20	---	1.2%	2.4%	2.4%	8.4%	6.0%	7.2%	3.6%	2.4%	1.2%	2.4%
SFY 2021	07/20-06/21	---	2.0%	0.0%	7.1%	4.1%	5.1%	1.0%	0.0%	2.0%	2.0%	3.1%
SFY 2022	07/21-06/22	---	0.9%	0.9%	0.0%	1.8%	0.0%	0.9%	Data not available			
<b>NORTH SOUND</b>												
SFY 2019	07/18-06/19	---	0.3%	2.1%	0.5%	2.6%	1.5%	2.3%	2.1%	1.5%	1.8%	1.3%
SFY 2020	07/19-06/20	---	0.9%	1.8%	2.3%	2.3%	2.7%	1.4%	0.0%	1.1%	0.9%	0.2%
SFY 2021	07/20-06/21	---	1.6%	2.3%	1.9%	2.6%	2.1%	1.4%	1.4%	1.9%	1.2%	0.9%

# WISe Outcomes

NOVEMBER 2023

## Juvenile Criminal Convictions

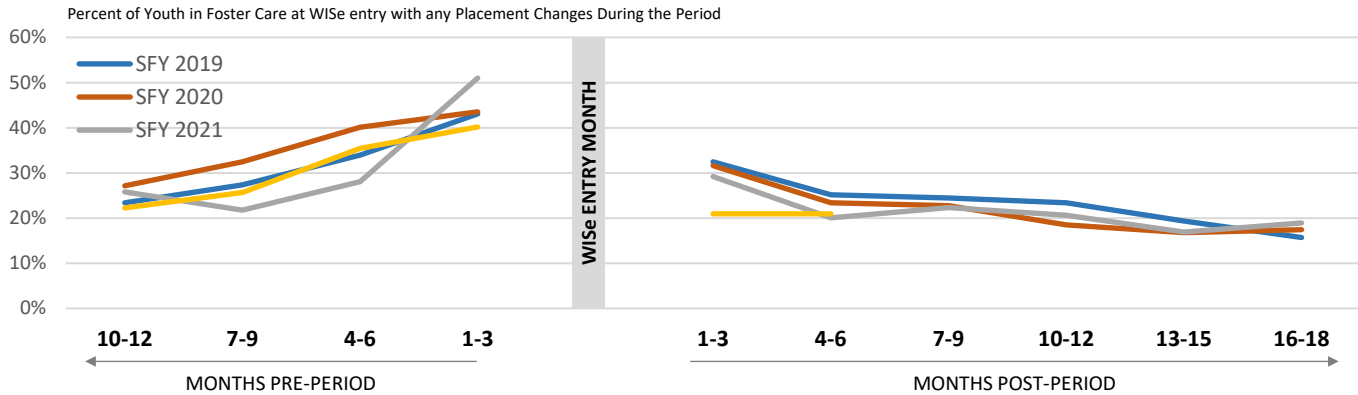
SFY 2022	07/21-06/22	--- <sup>2</sup>	0.3%	0.9%	0.9%	1.5%	1.5%	0.6%	<i>Data not available</i>			
<b>PIERCE</b>												
SFY 2019	07/18-06/19	--- <sup>2</sup>	0.4%	1.1%	0.7%	3.9%	4.2%	2.1%	0.0%	2.1%	1.4%	1.1%
SFY 2020	07/19-06/20	--- <sup>2</sup>	1.4%	1.4%	1.4%	1.4%	2.7%	1.1%	0.5%	1.9%	0.3%	0.3%
SFY 2021	07/20-06/21	--- <sup>2</sup>	1.6%	1.9%	0.6%	2.9%	1.6%	2.2%	1.3%	2.2%	1.6%	1.3%
SFY 2022	07/21-06/22	--- <sup>2</sup>	0.0%	0.0%	0.8%	2.3%	1.9%	0.8%	<i>Data not available</i>			
<b>SALISH</b>												
SFY 2019	07/18-06/19	--- <sup>2</sup>	1.6%	0.0%	1.6%	3.7%	2.1%	2.1%	2.6%	1.6%	0.5%	1.1%
SFY 2020	07/19-06/20	--- <sup>2</sup>	0.0%	0.9%	2.3%	2.8%	0.9%	0.9%	1.4%	1.4%	0.9%	0.5%
SFY 2021	07/20-06/21	--- <sup>2</sup>	0.5%	1.0%	0.5%	0.0%	0.0%	0.0%	1.0%	0.5%	0.5%	1.0%
SFY 2022	07/21-06/22	--- <sup>2</sup>	0.4%	0.4%	0.4%	1.3%	1.3%	2.2%	<i>Data not available</i>			
<b>SOUTHWEST</b>												
SFY 2019	07/18-06/19	--- <sup>2</sup>	0.6%	0.0%	2.2%	5.6%	2.8%	2.8%	2.8%	1.1%	1.1%	1.7%
SFY 2020	07/19-06/20	--- <sup>2</sup>	2.6%	1.6%	0.5%	2.1%	2.1%	1.6%	2.6%	1.0%	2.6%	2.6%
SFY 2021	07/20-06/21	--- <sup>2</sup>	1.8%	2.9%	1.8%	1.8%	3.5%	1.8%	1.2%	2.4%	1.2%	1.2%
SFY 2022	07/21-06/22	--- <sup>2</sup>	0.0%	0.7%	1.3%	1.3%	1.3%	2.0%	<i>Data not available</i>			
<b>SPOKANE</b>												
SFY 2019	07/18-06/19	--- <sup>2</sup>	2.4%	1.9%	1.9%	2.9%	2.9%	3.7%	2.7%	2.7%	0.8%	2.4%
SFY 2020	07/19-06/20	--- <sup>2</sup>	0.9%	1.2%	2.0%	3.2%	2.0%	1.4%	1.2%	2.0%	1.7%	1.4%
SFY 2021	07/20-06/21	--- <sup>2</sup>	0.7%	0.7%	0.5%	1.8%	2.9%	1.4%	1.1%	1.1%	1.4%	0.5%
SFY 2022	07/21-06/22	--- <sup>2</sup>	0.0%	0.6%	1.3%	2.1%	2.1%	0.8%	<i>Data not available</i>			
<b>THURSTON-MASON</b>												
SFY 2019	07/18-06/19	--- <sup>2</sup>	2.3%	4.6%	4.6%	3.1%	3.1%	3.1%	7.7%	3.1%	4.6%	1.5%
SFY 2020	07/19-06/20	--- <sup>2</sup>	2.3%	0.6%	3.6%	4.2%	1.6%	1.6%	2.9%	2.6%	1.3%	1.0%
SFY 2021	07/20-06/21	--- <sup>2</sup>	1.2%	1.2%	1.6%	1.2%	0.8%	3.3%	1.2%	1.2%	2.4%	1.2%
SFY 2022	07/21-06/22	--- <sup>2</sup>	0.0%	0.0%	3.4%	1.9%	1.0%	1.9%	<i>Data not available</i>			

**Notes.** <sup>1</sup>Primary suppression: To protect the privacy of individuals, cells in this data product that represent 10 or fewer persons are not displayed. <sup>2</sup>Secondary suppression: Some additional numbers representing more than 10 persons have also been suppressed to ensure that cells representing 10 or fewer persons cannot be calculated.

# WISe Outcomes

NOVEMBER 2023

## Foster Care Placement Changes



Cohort	N	MONTHS PRE-PERIOD				MONTHS POST PERIOD						
		10-12	7-9	4-6	1-3	1-3	4-6	7-9	10-12	13-15	16-18	
<b>WASHINGTON Entered Wise</b>												
Percent of Youth in Foster Care at WISe entry with any Placement Changes During the Period												
SFY 2019	07/18-06/19	274	23.4%	27.4%	33.9%	43.1%	32.5%	25.2%	24.5%	23.4%	19.3%	15.7%
SFY 2020	07/19-06/20	471	27.2%	32.5%	40.1%	43.5%	31.6%	23.4%	22.7%	18.5%	16.8%	17.4%
SFY 2021	07/20-06/21	349	25.8%	21.8%	28.1%	51.0%	29.2%	20.1%	22.3%	20.6%	16.9%	18.9%
SFY 2022	07/21-06/22	234	22.2%	25.6%	35.5%	40.2%	20.9%	20.9%	Data not available			
<b>REGIONS Entered Wise</b>												
<b>GREAT RIVERS</b>												
SFY 2019	07/18-06/19	---2	33.3%	40.0%	33.3%	30.0%	33.3%	43.3%	26.7%	13.3%	23.3%	23.3%
SFY 2020	07/19-06/20	---2	22.2%	33.3%	27.8%	33.3%	16.7%	22.2%	22.2%	16.7%	19.4%	19.4%
SFY 2021	07/20-06/21	---2	19.5%	19.5%	22.0%	43.9%	36.6%	24.4%	17.1%	9.8%	14.6%	19.5%
SFY 2022	07/21-06/22	---2	13.5%	16.2%	35.1%	45.9%	18.9%	13.5%	Data not available			
<b>GREATER COLUMBIA</b>												
SFY 2019	07/18-06/19	---2	37.5%	25.0%	41.7%	54.2%	50.0%	20.8%	41.7%	33.3%	12.5%	4.2%
SFY 2020	07/19-06/20	---2	25.0%	28.8%	48.1%	50.0%	38.5%	23.1%	30.8%	23.1%	21.2%	15.4%
SFY 2021	07/20-06/21	---2	33.3%	39.4%	45.5%	57.6%	45.5%	15.2%	33.3%	21.2%	21.2%	18.2%
SFY 2022	07/21-06/22	---2	26.1%	30.4%	26.1%	30.4%	13.0%	30.4%	Data not available			
<b>KING COUNTY</b>												
SFY 2019	07/18-06/19	---2	26.3%	31.6%	26.3%	36.8%	39.5%	26.3%	26.3%	21.1%	21.1%	13.2%
SFY 2020	07/19-06/20	---2	28.9%	30.3%	34.2%	25.0%	19.7%	15.8%	17.1%	9.2%	10.5%	13.2%
SFY 2021	07/20-06/21	---2	23.3%	36.7%	30.0%	53.3%	13.3%	20.0%	30.0%	23.3%	23.3%	20.0%
SFY 2022	07/21-06/22	---2	42.9%	38.1%	28.6%	42.9%	14.3%	28.6%	Data not available			
<b>NORTH CENTRAL</b>												
SFY 2019	07/18-06/19	---2	28.0%	12.0%	20.0%	60.0%	20.0%	28.0%	16.0%	16.0%	12.0%	12.0%
SFY 2020	07/19-06/20	---2	39.1%	47.8%	60.9%	65.2%	34.8%	26.1%	21.7%	17.4%	0.0%	17.4%
SFY 2021	07/20-06/21	---2	31.3%	25.0%	43.8%	43.8%	50.0%	25.0%	18.8%	37.5%	6.3%	25.0%
SFY 2022	07/21-06/22	---2	36.4%	27.3%	45.5%	45.5%	63.6%	9.1%	Data not available			
<b>NORTH SOUND</b>												
SFY 2019	07/18-06/19	---2	15.2%	24.2%	27.3%	39.4%	30.3%	12.1%	18.2%	27.3%	24.2%	18.2%
SFY 2020	07/19-06/20	---2	20.6%	33.3%	44.4%	36.5%	27.0%	22.2%	20.6%	19.0%	11.1%	9.5%
SFY 2021	07/20-06/21	---2	28.6%	26.2%	28.6%	64.3%	26.2%	21.4%	19.0%	19.0%	16.7%	19.0%

# WISe Outcomes

NOVEMBER 2023

## Foster Care Placement Changes

SFY 2022	07/21-06/22	--- <sup>2</sup>	24.0%	24.0%	40.0%	20.0%	20.0%	4.0%	<i>Data not available</i>			
<b>PIERCIE</b>												
SFY 2019	07/18-06/19	--- <sup>2</sup>	8.1%	13.5%	37.8%	54.1%	40.5%	29.7%	29.7%	37.8%	21.6%	16.2%
SFY 2020	07/19-06/20	81	28.4%	28.4%	35.8%	46.9%	43.2%	28.4%	24.7%	21.0%	19.8%	21.0%
SFY 2021	07/20-06/21	--- <sup>2</sup>	22.2%	7.4%	20.4%	44.4%	29.6%	20.4%	18.5%	20.4%	14.8%	20.4%
SFY 2022	07/21-06/22	--- <sup>2</sup>	11.5%	23.1%	34.6%	57.7%	15.4%	23.1%	<i>Data not available</i>			
<b>SALISH</b>												
SFY 2019	07/18-06/19	--- <sup>2</sup>	25.0%	40.0%	50.0%	55.0%	50.0%	50.0%	55.0%	20.0%	25.0%	25.0%
SFY 2020	07/19-06/20	--- <sup>2</sup>	28.6%	32.7%	40.8%	51.0%	44.9%	30.6%	28.6%	20.4%	12.2%	18.4%
SFY 2021	07/20-06/21	--- <sup>2</sup>	17.2%	10.3%	17.2%	75.9%	34.5%	20.7%	24.1%	13.8%	13.8%	13.8%
SFY 2022	07/21-06/22	--- <sup>2</sup>	10.0%	25.0%	30.0%	65.0%	20.0%	20.0%	<i>Data not available</i>			
<b>SOUTHWEST</b>												
SFY 2019	07/18-06/19	--- <sup>2</sup>	20.0%	33.3%	40.0%	26.7%	6.7%	6.7%	0.0%	6.7%	6.7%	6.7%
SFY 2020	07/19-06/20	--- <sup>2</sup>	30.8%	38.5%	57.7%	65.4%	34.6%	23.1%	7.7%	30.8%	30.8%	7.7%
SFY 2021	07/20-06/21	--- <sup>2</sup>	21.4%	28.6%	35.7%	50.0%	21.4%	10.7%	25.0%	32.1%	10.7%	28.6%
SFY 2022	07/21-06/22	--- <sup>2</sup>	37.5%	18.8%	31.3%	25.0%	18.8%	18.8%	<i>Data not available</i>			
<b>SPOKANE</b>												
SFY 2019	07/18-06/19	--- <sup>2</sup>	25.0%	27.5%	32.5%	40.0%	22.5%	15.0%	15.0%	30.0%	20.0%	20.0%
SFY 2020	07/19-06/20	--- <sup>2</sup>	31.6%	31.6%	26.3%	47.4%	26.3%	15.8%	26.3%	13.2%	26.3%	21.1%
SFY 2021	07/20-06/21	--- <sup>2</sup>	23.5%	17.6%	27.5%	47.1%	19.6%	15.7%	23.5%	19.6%	13.7%	9.8%
SFY 2022	07/21-06/22	--- <sup>2</sup>	14.7%	29.4%	52.9%	41.2%	20.6%	32.4%	<i>Data not available</i>			
<b>THURSTON-MASON</b>												
SFY 2019	07/18-06/19	--- <sup>2</sup>	16.7%	41.7%	50.0%	25.0%	16.7%	16.7%	8.3%	0.0%	16.7%	8.3%
SFY 2020	07/19-06/20	--- <sup>2</sup>	22.2%	37.0%	44.4%	44.4%	25.9%	29.6%	22.2%	22.2%	22.2%	40.7%
SFY 2021	07/20-06/21	--- <sup>2</sup>	48.0%	20.0%	24.0%	28.0%	28.0%	32.0%	16.0%	24.0%	36.0%	24.0%
SFY 2022	07/21-06/22	--- <sup>2</sup>	28.6%	28.6%	23.8%	23.8%	28.6%	23.8%	<i>Data not available</i>			

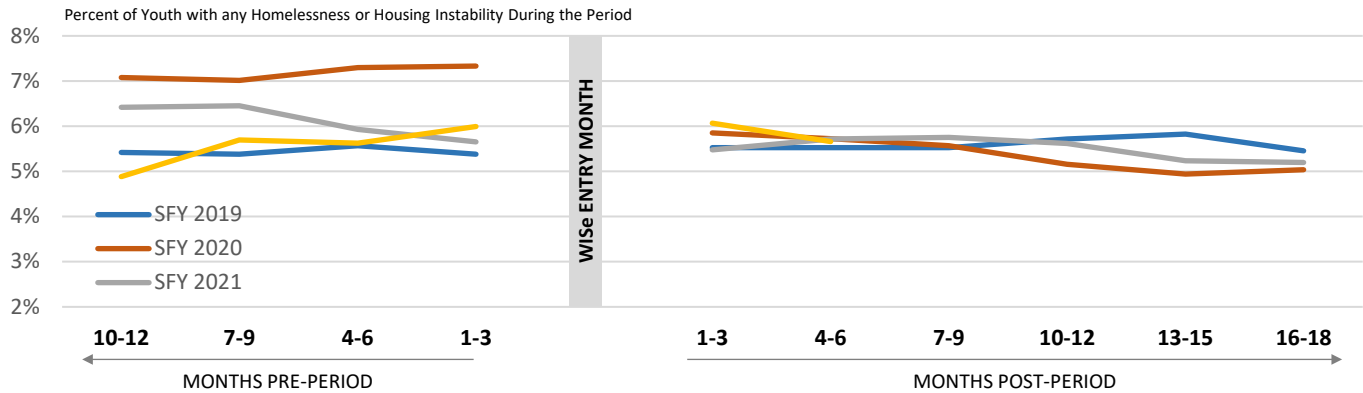
**Notes.** <sup>1</sup>Primary suppression: To protect the privacy of individuals, cells in this data product that represent 10 or fewer persons are not displayed.

<sup>2</sup>Secondary suppression: Some additional numbers representing more than 10 persons have also been suppressed to ensure that cells representing 10 or fewer persons cannot be calculated.

# WISe Outcomes

NOVEMBER 2023

## Homelessness or Housing Instability



Cohort	Entered Wise	N	MONTHS PRE-PERIOD				MONTHS POST PERIOD					
			10-12	7-9	4-6	1-3	1-3	4-6	7-9	10-12	13-15	16-18
<b>WASHINGTON</b>												
Percent of Youth with any Homelessness or Housing Instability During the Period												
SFY 2019	07/18-06/19	2,695	5.4%	5.4%	5.6%	5.4%	5.5%	5.5%	5.5%	5.7%	5.8%	5.5%
SFY 2020	07/19-06/20	3,178	7.1%	7.0%	7.3%	7.3%	5.9%	5.7%	5.6%	5.2%	4.9%	5.0%
SFY 2021	07/20-06/21	2,867	6.4%	6.5%	5.9%	5.7%	5.5%	5.7%	5.8%	5.6%	5.2%	5.2%
SFY 2022	07/21-06/22	--- <sup>2</sup>	4.9%	5.7%	5.6%	6.0%	6.1%	5.7%	Data not available			
<b>REGIONS</b>												
Entered Wise												
<b>GREAT RIVERS</b>												
SFY 2019	07/18-06/19	--- <sup>2</sup>	8.1%	9.4%	8.1%	9.0%	8.1%	7.3%	8.1%	8.1%	10.3%	8.1%
SFY 2020	07/19-06/20	--- <sup>2</sup>	8.4%	7.3%	5.1%	4.8%	5.1%	5.5%	5.9%	5.5%	5.5%	5.1%
SFY 2021	07/20-06/21	--- <sup>2</sup>	9.9%	10.9%	8.7%	8.7%	7.7%	7.4%	6.7%	6.4%	5.4%	5.4%
SFY 2022	07/21-06/22	--- <sup>2</sup>	6.5%	7.4%	8.3%	8.8%	6.8%	5.6%	Data not available			
<b>GREATER COLUMBIA</b>												
SFY 2019	07/18-06/19	--- <sup>2</sup>	3.2%	2.4%	3.2%	2.7%	3.4%	3.7%	3.2%	2.9%	3.9%	4.4%
SFY 2020	07/19-06/20	--- <sup>2</sup>	3.5%	3.8%	5.2%	4.5%	3.1%	3.3%	4.0%	3.3%	2.1%	2.4%
SFY 2021	07/20-06/21	--- <sup>2</sup>	5.1%	5.3%	5.6%	5.9%	6.1%	5.3%	5.6%	4.0%	3.7%	3.7%
SFY 2022	07/21-06/22	--- <sup>2</sup>	3.8%	4.4%	4.9%	4.4%	4.9%	4.9%	Data not available			
<b>KING COUNTY</b>												
SFY 2019	07/18-06/19	--- <sup>2</sup>	6.6%	7.2%	7.5%	5.8%	6.4%	5.0%	5.0%	6.1%	6.1%	5.0%
SFY 2020	07/19-06/20	--- <sup>2</sup>	8.6%	10.7%	9.9%	9.2%	7.4%	6.7%	6.1%	5.9%	5.3%	5.9%
SFY 2021	07/20-06/21	--- <sup>2</sup>	5.6%	5.6%	5.6%	5.2%	5.6%	6.3%	6.3%	5.6%	5.2%	5.6%
SFY 2022	07/21-06/22	--- <sup>2</sup>	5.0%	6.4%	5.5%	5.9%	6.8%	6.4%	Data not available			
<b>NORTH CENTRAL</b>												
SFY 2019	07/18-06/19	--- <sup>2</sup>	6.9%	3.4%	6.2%	5.5%	4.8%	3.4%	4.1%	4.1%	2.1%	2.8%
SFY 2020	07/19-06/20	--- <sup>2</sup>	7.2%	3.6%	8.4%	8.4%	1.2%	2.4%	1.2%	1.2%	1.2%	1.2%
SFY 2021	07/20-06/21	--- <sup>2</sup>	4.1%	3.1%	3.1%	2.0%	1.0%	3.1%	3.1%	6.1%	5.1%	5.1%
SFY 2022	07/21-06/22	--- <sup>2</sup>	0.9%	1.8%	1.8%	2.7%	1.8%	0.9%	Data not available			
<b>NORTH SOUND</b>												
SFY 2019	07/18-06/19	--- <sup>2</sup>	4.4%	4.9%	4.9%	4.6%	4.6%	5.9%	5.4%	6.4%	5.7%	4.9%
SFY 2020	07/19-06/20	--- <sup>2</sup>	6.3%	5.4%	6.1%	5.2%	5.0%	5.4%	5.2%	5.6%	5.9%	6.3%
SFY 2021	07/20-06/21	--- <sup>2</sup>	6.5%	5.6%	5.6%	4.9%	4.9%	5.8%	5.4%	5.6%	5.6%	4.7%

# WISe Outcomes

NOVEMBER 2023

## Homelessness or Housing Instability

SFY 2022	07/21-06/22	---	4.7%	4.7%	5.0%	5.0%	6.2%	5.9%	<i>Data not available</i>			
<b>PIERCE</b>												
SFY 2019	07/18-06/19	---	6.7%	7.4%	6.0%	6.7%	6.0%	6.0%	5.3%	6.3%	7.0%	6.0%
SFY 2020	07/19-06/20	---	8.9%	8.9%	8.9%	9.8%	6.2%	6.0%	6.0%	5.7%	5.1%	5.1%
SFY 2021	07/20-06/21	---	6.4%	6.7%	5.8%	5.4%	5.4%	6.4%	6.1%	5.8%	5.1%	6.4%
SFY 2022	07/21-06/22	---	4.5%	7.6%	7.2%	6.1%	7.2%	7.2%	<i>Data not available</i>			
<b>SALISH</b>												
SFY 2019	07/18-06/19	---	6.8%	7.4%	7.9%	8.9%	11.6%	10.0%	8.9%	7.4%	6.3%	6.8%
SFY 2020	07/19-06/20	---	5.6%	6.1%	10.3%	13.1%	10.7%	9.8%	9.3%	8.9%	8.9%	7.5%
SFY 2021	07/20-06/21	---	5.6%	6.2%	3.1%	4.1%	2.6%	3.1%	3.1%	2.6%	4.1%	3.1%
SFY 2022	07/21-06/22	---	4.8%	5.2%	4.8%	4.8%	4.4%	5.2%	<i>Data not available</i>			
<b>SOUTHWEST</b>												
SFY 2019	07/18-06/19	---	4.4%	4.4%	4.4%	2.8%	4.4%	6.1%	5.6%	4.4%	6.1%	5.0%
SFY 2020	07/19-06/20	---	11.4%	10.4%	9.3%	9.3%	7.8%	7.3%	6.7%	4.7%	4.7%	4.7%
SFY 2021	07/20-06/21	---	4.7%	2.9%	2.4%	2.9%	2.4%	1.2%	2.4%	1.8%	1.8%	1.2%
SFY 2022	07/21-06/22	---	7.3%	4.6%	4.6%	5.3%	2.0%	1.3%	<i>Data not available</i>			
<b>SPOKANE</b>												
SFY 2019	07/18-06/19	---	4.0%	3.5%	4.3%	5.3%	4.5%	5.3%	6.7%	6.7%	5.9%	6.4%
SFY 2020	07/19-06/20	---	4.9%	5.2%	4.3%	4.9%	4.6%	4.6%	4.6%	3.8%	5.2%	5.5%
SFY 2021	07/20-06/21	---	6.8%	7.2%	6.8%	5.9%	6.8%	6.8%	7.0%	8.1%	7.9%	7.9%
SFY 2022	07/21-06/22	---	5.5%	6.5%	6.3%	7.2%	7.4%	6.5%	<i>Data not available</i>			
<b>THURSTON-MASON</b>												
SFY 2019	07/18-06/19	---	6.2%	5.4%	5.4%	3.8%	3.1%	3.1%	3.8%	3.8%	3.8%	4.6%
SFY 2020	07/19-06/20	---	7.8%	6.5%	7.1%	7.8%	6.5%	6.1%	5.5%	5.2%	4.2%	4.2%
SFY 2021	07/20-06/21	---	6.9%	7.3%	8.5%	7.7%	6.5%	6.9%	7.7%	7.3%	5.3%	5.7%
SFY 2022	07/21-06/22	---	3.8%	5.3%	3.8%	6.7%	8.7%	8.2%	<i>Data not available</i>			

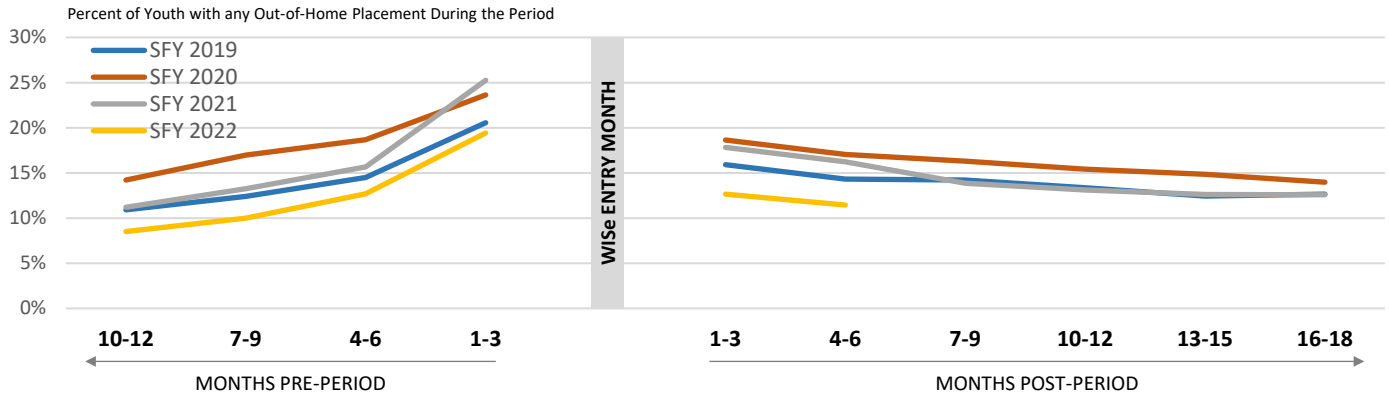
**Notes.** <sup>1</sup>Primary suppression: To protect the privacy of individuals, cells in this data product that represent 10 or fewer persons are not displayed.

<sup>2</sup>Secondary suppression: Some additional numbers representing more than 10 persons have also been suppressed to ensure that cells representing 10 or fewer persons cannot be calculated.

# WISe Outcomes

NOVEMBER 2023

## Any Out-of-Home Placement



Cohort	Entered Wise	N	MONTHS PRE-PERIOD				MONTHS POST PERIOD					
			10-12	7-9	4-6	1-3	1-3	4-6	7-9	10-12	13-15	16-18
<b>WASHINGTON</b>												
Percent of Youth with Any Out-of-Home Placement During the Period												
SFY 2019	07/18-06/19	2,695	10.9%	12.4%	14.5%	20.6%	15.9%	14.3%	14.2%	13.4%	12.4%	12.7%
SFY 2020	07/19-06/20	3,178	14.2%	17.0%	18.7%	23.6%	18.6%	17.1%	16.3%	15.4%	14.9%	14.0%
SFY 2021	07/20-06/21	2,867	11.2%	13.3%	15.7%	25.3%	17.8%	16.2%	13.8%	13.1%	12.6%	12.6%
SFY 2022	07/21-06/22	---	8.5%	10.0%	12.7%	19.4%	12.7%	11.4%	Data not available			
<b>REGIONS</b>												
Entered Wise												
<b>GREAT RIVERS</b>												
SFY 2019	07/18-06/19	---	10.3%	12.4%	15.0%	19.7%	17.1%	16.2%	17.1%	17.1%	17.5%	15.0%
SFY 2020	07/19-06/20	---	13.2%	18.3%	19.4%	20.9%	15.8%	14.3%	15.4%	15.0%	13.2%	12.8%
SFY 2021	07/20-06/21	---	10.9%	12.8%	13.5%	19.9%	16.0%	14.1%	12.8%	10.9%	11.2%	10.9%
SFY 2022	07/21-06/22	---	8.0%	9.4%	11.8%	18.6%	14.2%	10.6%	Data not available			
<b>GREATER COLUMBIA</b>												
SFY 2019	07/18-06/19	---	7.6%	7.6%	9.0%	13.9%	11.5%	11.2%	9.8%	10.0%	9.3%	9.8%
SFY 2020	07/19-06/20	---	10.2%	11.6%	13.9%	18.0%	14.9%	15.6%	14.7%	13.5%	13.0%	12.1%
SFY 2021	07/20-06/21	---	9.6%	12.0%	13.6%	19.7%	13.3%	15.2%	11.2%	9.8%	10.1%	12.5%
SFY 2022	07/21-06/22	---	7.1%	6.8%	9.3%	13.7%	7.9%	9.0%	Data not available			
<b>KING COUNTY</b>												
SFY 2019	07/18-06/19	---	13.0%	13.9%	16.9%	21.1%	17.2%	16.6%	16.6%	15.8%	13.6%	14.1%
SFY 2020	07/19-06/20	---	16.2%	18.3%	17.9%	21.0%	16.8%	15.3%	15.5%	14.3%	13.4%	12.0%
SFY 2021	07/20-06/21	---	11.8%	12.2%	13.5%	26.7%	21.5%	16.0%	13.9%	13.2%	12.2%	12.2%
SFY 2022	07/21-06/22	---	15.9%	15.0%	17.7%	23.2%	14.5%	12.7%	Data not available			
<b>NORTH CENTRAL</b>												
SFY 2019	07/18-06/19	---	14.5%	11.7%	12.4%	24.1%	19.3%	17.9%	15.2%	13.8%	12.4%	13.1%
SFY 2020	07/19-06/20	---	20.5%	26.5%	30.1%	37.3%	27.7%	22.9%	22.9%	20.5%	18.1%	16.9%
SFY 2021	07/20-06/21	---	17.3%	16.3%	22.4%	28.6%	22.4%	18.4%	15.3%	17.3%	15.3%	12.2%
SFY 2022	07/21-06/22	---	8.0%	10.6%	13.3%	19.5%	14.2%	9.7%	Data not available			
<b>NORTH SOUND</b>												
SFY 2019	07/18-06/19	---	11.6%	14.7%	18.3%	21.9%	14.2%	13.4%	13.4%	11.6%	10.6%	11.6%
SFY 2020	07/19-06/20	---	13.1%	18.2%	21.8%	25.0%	19.1%	17.1%	15.1%	13.3%	13.5%	14.2%
SFY 2021	07/20-06/21	---	11.0%	12.4%	17.8%	24.5%	16.1%	13.6%	12.6%	11.4%	11.4%	9.8%



# WISe Outcomes

NOVEMBER 2023

## Any Out-of-Home Placement

SFY 2022	07/21-06/22	---2	7.7%	11.5%	15.0%	15.6%	13.3%	11.8%	<i>Data not available</i>			
<b>PIERCE</b>												
SFY 2019	07/18-06/19	---2	11.3%	11.3%	13.7%	20.8%	16.5%	15.5%	17.3%	14.4%	15.5%	15.1%
SFY 2020	07/19-06/20	---2	19.5%	22.5%	23.6%	30.4%	25.2%	22.5%	21.7%	21.1%	19.0%	18.2%
SFY 2021	07/20-06/21	---2	13.5%	14.1%	16.7%	26.6%	21.8%	20.5%	17.9%	15.7%	16.3%	16.7%
SFY 2022	07/21-06/22	---2	7.6%	11.0%	12.5%	23.5%	13.3%	12.9%	<i>Data not available</i>			
<b>SALISH</b>												
SFY 2019	07/18-06/19	---2	9.5%	10.5%	12.1%	18.9%	20.5%	16.8%	16.8%	16.3%	13.7%	13.2%
SFY 2020	07/19-06/20	---2	19.2%	21.5%	21.0%	28.0%	26.6%	20.6%	22.9%	21.5%	22.0%	19.6%
SFY 2021	07/20-06/21	---2	9.7%	12.3%	13.8%	27.2%	17.9%	15.9%	13.8%	12.3%	11.8%	10.3%
SFY 2022	07/21-06/22	---2	5.2%	5.2%	7.9%	14.4%	13.5%	10.5%	<i>Data not available</i>			
<b>SOUTHWEST</b>												
SFY 2019	07/18-06/19	---2	6.1%	7.2%	12.2%	16.7%	13.9%	12.2%	10.0%	9.4%	10.0%	10.0%
SFY 2020	07/19-06/20	---2	14.0%	11.9%	17.6%	22.3%	20.2%	19.7%	15.5%	16.1%	15.5%	14.5%
SFY 2021	07/20-06/21	---2	14.7%	20.6%	21.8%	32.9%	21.8%	20.6%	18.2%	19.4%	18.2%	17.6%
SFY 2022	07/21-06/22	---2	14.6%	17.9%	18.5%	19.2%	15.9%	19.2%	<i>Data not available</i>			
<b>SPOKANE</b>												
SFY 2019	07/18-06/19	---2	12.0%	16.3%	16.8%	27.0%	17.1%	12.6%	13.1%	13.4%	11.5%	13.4%
SFY 2020	07/19-06/20	---2	12.7%	15.0%	17.1%	27.2%	17.1%	15.9%	13.9%	14.2%	15.3%	12.4%
SFY 2021	07/20-06/21	---2	10.9%	13.8%	15.8%	30.8%	18.8%	18.6%	15.2%	16.5%	13.8%	14.7%
SFY 2022	07/21-06/22	---2	7.4%	8.6%	12.8%	24.2%	11.6%	9.5%	<i>Data not available</i>			
<b>THURSTON-MASON</b>												
SFY 2019	07/18-06/19	---2	15.4%	18.5%	16.9%	22.3%	16.9%	14.6%	16.2%	13.8%	13.1%	11.5%
SFY 2020	07/19-06/20	---2	9.4%	12.0%	13.3%	18.4%	13.6%	13.6%	12.9%	12.0%	11.7%	12.3%
SFY 2021	07/20-06/21	---2	7.7%	11.0%	13.4%	20.3%	14.2%	12.2%	10.2%	8.9%	9.8%	9.8%
SFY 2022	07/21-06/22	---2	8.7%	9.6%	11.5%	22.6%	13.0%	13.9%	<i>Data not available</i>			

**Notes.** <sup>1</sup>Primary suppression: To protect the privacy of individuals, cells in this data product that represent 10 or fewer persons are not displayed. <sup>2</sup>Secondary suppression: Some additional numbers representing more than 10 persons have also been suppressed to ensure that cells representing 10 or fewer persons cannot be calculated.