

# WISe Screening Report

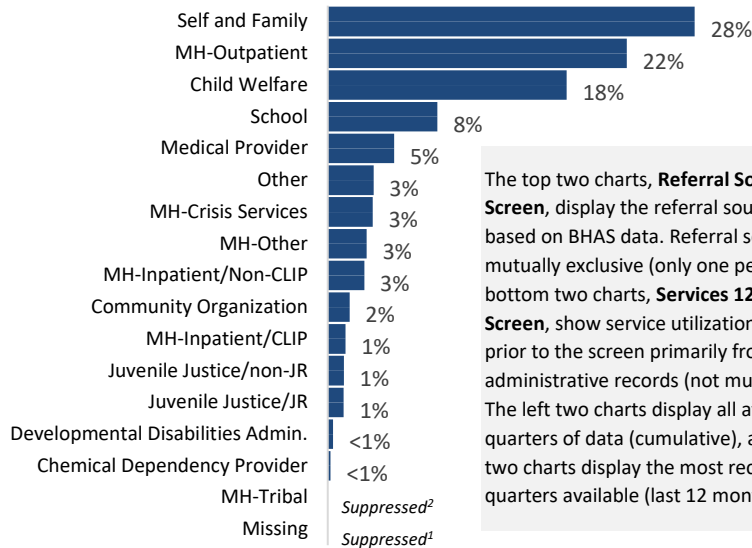
2024 QUARTER 1

## Referral Sources and Service History

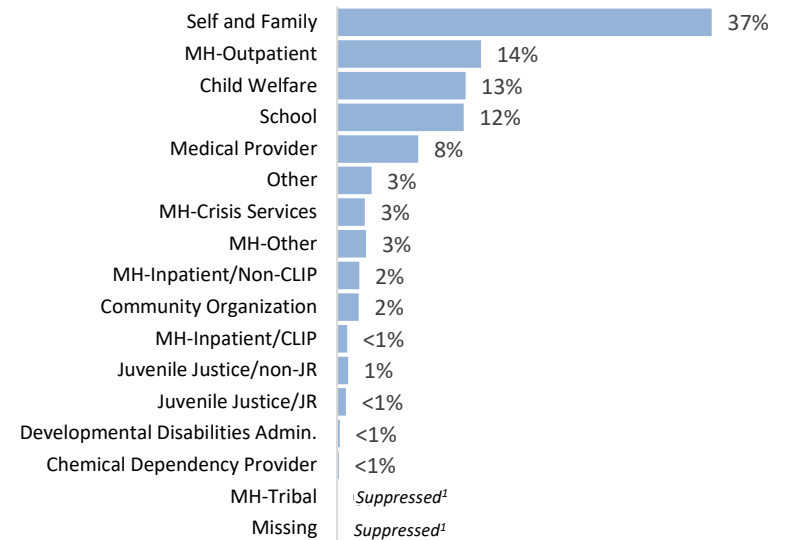
### Referral Source for WISe Screen

SOURCE: BHAS

#### CUMULATIVE July 2014 - September 2023



#### LAST 12 MONTHS October 2022 - September 2023

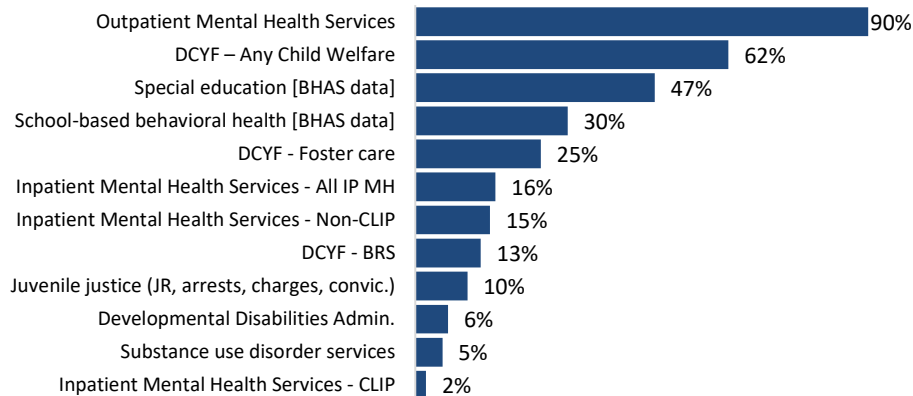


The top two charts, **Referral Sources for WISe Screen**, display the referral sources for screens based on BHAS data. Referral sources are mutually exclusive (only one per screen). The bottom two charts, **Services 12 Months Before Screen**, show service utilization in the year prior to the screen primarily from administrative records (not mutually exclusive). The left two charts display all available quarters of data (cumulative), and the right two charts display the most recent four quarters available (last 12 months).

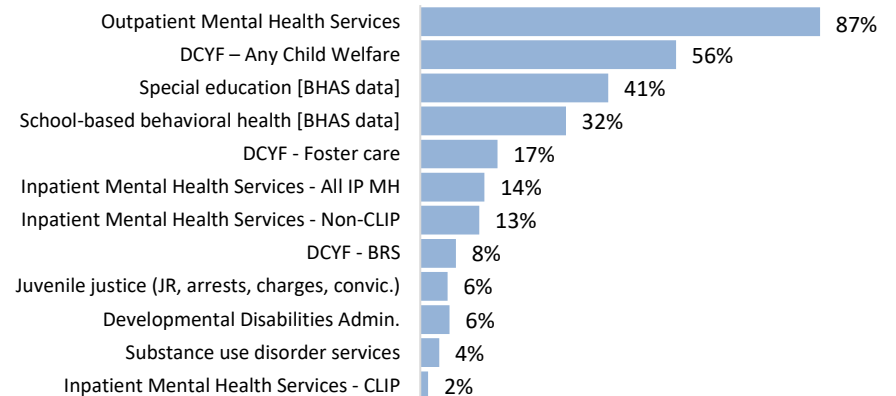
### Services 12 Months Before Screen

SOURCE: Admin data, except education items from BHAS

#### CUMULATIVE July 2014 - June 2023



#### LAST 12 MONTHS July 2022 - June 2023

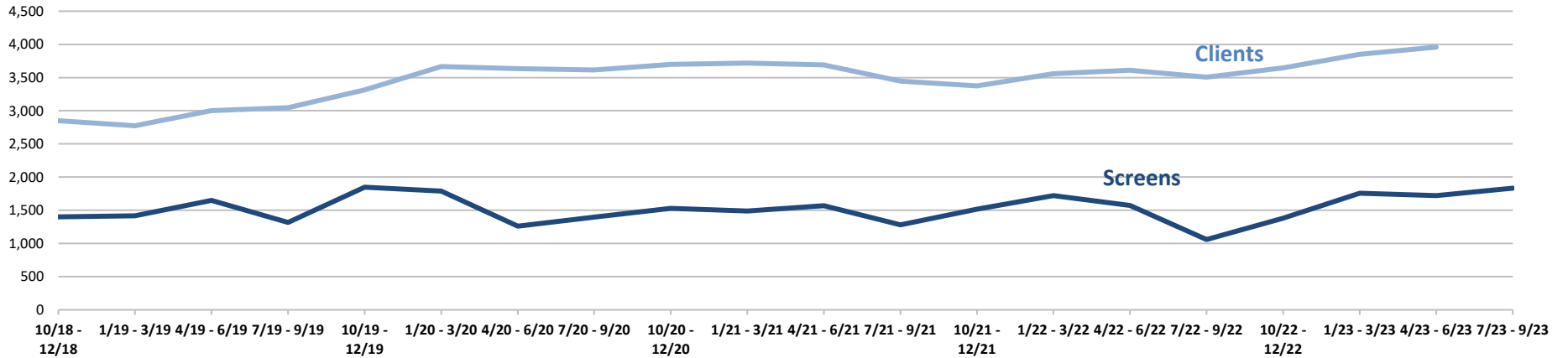


NOTES: Charts reflect data shown on page 3. See additional data notes on that page.

# WISe Screening Report

2024 QUARTER 1

## Quarterly Counts of Screens and Clients



QUARTER	NUMBER OF SCREENS (DUPLICATED)											NUMBER OF CLIENTS (UNDUPLICATED)										
	WASHINGTON	Great Rivers	Greater Columbia	King County	North Central	North Sound	Pierce County	Salish	Southwest	Spokane Region	Thurston Mason	WASHINGTON	Great Rivers	Greater Columbia	King County	North Central	North Sound	Pierce County	Salish	Southwest	Spokane Region	Thurston Mason
10/18 - 12/18	1,402	126	195	97	98	226	148	103	98	233	78	2,850	229	431	351	145	368	315	191	186	424	217
1/19 - 3/19	1,415	86	247	126	88	179	134	103	142	224	86	2,774	236	441	342	151	393	305	204	206	422	109
4/19 - 6/19	1,649	146	241	219	71	248	128	114	95	289	98	3,001	282	467	392	129	440	314	223	217	456	114
7/19 - 9/19	1,316	97	157	157	68	177	145	81	107	253	74	3,046	290	434	404	134	454	271	225	216	453	199
10/19 - 12/19	1,848	152	231	179	76	242	231	137	135	353	112	3,316	334	473	450	122	490	362	218	257	453	188
1/20 - 3/20	1,789	138	238	207	73	266	252	136	113	281	85	3,665	352	522	528	115	527	412	246	264	472	260
4/20 - 6/20	1,260	83	181	162	57	186	162	61	97	198	73	3,634	358	510	434	95	556	432	237	281	466	302
7/20 - 9/20	1,398	135	202	127	51	200	178	87	93	269	56	3,615	388	477	423	96	560	462	221	303	438	306
10/20 - 12/20	1,528	150	209	180	68	214	173	101	102	272	59	3,698	426	456	441	94	533	458	227	310	481	326
1/21 - 3/21	1,487	144	218	138	69	191	158	112	115	278	64	3,719	409	458	432	96	560	435	244	306	526	311
4/21 - 6/21	1,568	179	219	126	75	218	172	106	89	263	121	3,691	396	481	413	114	553	384	260	263	547	320
7/21 - 9/21	1,281	145	119	109	58	165	152	108	89	251	85	3,448	404	424	365	111	518	357	247	237	535	303
10/21 - 12/21	1,516	166	196	125	54	175	223	118	62	279	118	3,373	413	391	347	114	463	341	271	239	548	285
1/22 - 3/22	1,720	173	240	121	114	227	213	124	106	305	97	3,557	431	413	339	140	477	385	277	258	589	294
4/22 - 6/22	1,573	178	249	98	78	197	163	99	93	284	134	3,612	487	459	306	144	481	366	286	269	558	292
7/22 - 9/22	1,059	134	170	74	65	86	173	61	40	152	104	3,506	445	425	307	149	469	390	258	287	543	282
10/22 - 12/22	1,381	161	229	87	80	126	214	79	67	232	106	3,645	412	473	311	151	483	440	235	259	547	363
1/23 - 3/23	1,757	202	303	141	77	187	251	106	107	319	64	3,852	427	531	354	164	535	436	231	265	602	352
4/23 - 6/23	1,720	201	271	152	78	224	193	102	128	282	89	3,959	433	550	388	178	562	429	253	259	598	340
7/23 - 9/23	1,835	180	304	173	64	214	186	138	128	268	180											

NOTES: Counts of screens (not unduplicated; a child may have more than one in each time period) from WISe screening data (BHAS). Counts of clients (unduplicated; at most one in each time period at the state level) from administrative data (ProviderOne). Due to data lag, service data not available as recently as screening data. Service data may be incomplete in the last quarter shown. Regions reflect current HCA managed care regions.

# WiSe Screening Report

2024 QUARTER 1

## Statewide Screens

Duplicated Screens

### Referral Source for WiSe Screen

SOURCE: BHAS

Referral Source for WiSe Screen	WASHINGTON STATE				WASHINGTON STATE, Last 8 Quarters of Data															
	Cumulative 07/14-09/23		Last 12 months 10/22-09/23		10/21-12/21		01/22-03/22		04/22-06/22		07/22-09/22		10/22-12/22		01/23-03/23		04/23-06/23		07/23-09/23	
	N	PCT	N	PCT	N	PCT	N	PCT	N	PCT	N	PCT	N	PCT	N	PCT	N	PCT	N	PCT
Self and Family	11,972	27.6%	2,449	36.6%	521	34.4%	561	32.6%	557	35.4%	428	40.4%	500	36.2%	652	37.1%	611	35.5%	686	37.4%
MH-Outpatient	9,757	22.5%	940	14.0%	219	14.4%	237	13.8%	216	13.7%	107	10.1%	172	12.5%	214	12.2%	285	16.6%	269	14.7%
Child Welfare	7,796	18.0%	839	12.5%	243	16.0%	308	17.9%	243	15.4%	205	19.4%	180	13.0%	205	11.7%	210	12.2%	244	13.3%
School	3,578	8.2%	827	12.4%	191	12.6%	230	13.4%	194	12.3%	57	5.4%	216	15.6%	236	13.4%	231	13.4%	144	7.8%
Medical Provider	2,165	5.0%	530	7.9%	94	6.2%	101	5.9%	120	7.6%	90	8.5%	93	6.7%	150	8.5%	114	6.6%	173	9.4%
Other	1,494	3.4%	224	3.3%	35	2.3%	37	2.2%	40	2.5%	42	4.0%	50	3.6%	63	3.6%	46	2.7%	65	3.5%
MH-Crisis Services	1,467	3.4%	182	2.7%	45	3.0%	41	2.4%	34	2.2%	15	1.4%	31	2.2%	56	3.2%	45	2.6%	50	2.7%
MH-Other	1,272	2.9%	190	2.8%	52	3.4%	63	3.7%	52	3.3%	31	2.9%	35	2.5%	47	2.7%	53	3.1%	55	3.0%
MH-Inpatient/Non-CLIP	1,192	2.7%	145	2.2%	33	2.2%	57	3.3%	53	3.4%	33	3.1%	33	2.4%	45	2.6%	31	1.8%	36	2.0%
Community Organization	711	1.6%	141	2.1%	30	2.0%	34	2.0%	22	1.4%	13	1.2%	21	1.5%	50	2.8%	33	1.9%	37	2.0%
MH-Inpatient/CLIP	577	1.3%	65	1.0%	---	---	18	1.0%	18	1.1%	13	1.2%	---	---	---	---	19	1.1%	24	1.3%
Juvenile Justice/non-JR	527	1.2%	72	1.1%	15	1.0%	12	0.7%	---	---	---	---	11	0.8%	14	0.8%	22	1.3%	25	1.4%
Juvenile Justice/JR	520	1.2%	58	0.9%	14	0.9%	12	0.7%	12	0.8%	---	---	15	1.1%	---	---	---	---	22	1.2%
Developmental Disabilities Admin.	172	0.4%	17	0.3%	---	---	---	---	---	---	---	---	---	---	---	---	---	---	---	---
Chemical Dependency Provider	90	0.2%	11	0.2%	---	---	---	---	---	---	---	---	---	---	---	---	---	---	---	---
MH-Tribal	---	---	---	---	---	---	---	---	---	---	---	---	---	---	---	---	---	---	---	---
Missing	---	---	---	---	---	---	---	---	---	---	---	---	---	---	---	---	---	---	---	---
<b>TOTAL</b>	<b>43,290</b>	<b>100%</b>	<b>6,690</b>	<b>100%</b>	<b>1,492</b>	<b>98%</b>	<b>1,711</b>	<b>99%</b>	<b>1,561</b>	<b>99%</b>	<b>1,034</b>	<b>98%</b>	<b>1,357</b>	<b>98%</b>	<b>1,732</b>	<b>99%</b>	<b>1,700</b>	<b>99%</b>	<b>1,830</b>	<b>100%</b>

### Services 12 Months Before Screen

SOURCE: Admin data, except BHAS education items

Services 12 Months Before Screen	Cumulative 07/14-06/23		Last 12 months 07/22-06/23		07/21-09/21		10/21-12/21		01/22-03/22		04/22-06/22		07/22-09/22		10/22-12/22		01/23-03/23		04/23-06/23	
	N	PCT	N	PCT	N	PCT	N	PCT	N	PCT	N	PCT	N	PCT	N	PCT	N	PCT	N	PCT
Outpatient Mental Health Services	37,172	89.6%	5,156	87.3%	1,130	88.4%	1,295	85.6%	1,470	85.6%	1,342	85.5%	900	85.2%	1,195	86.7%	1,550	88.4%	1,511	88.0%
DCYF – Any Child Welfare	25,701	62.0%	3,299	55.9%	839	65.6%	841	55.6%	987	57.5%	895	57.0%	640	60.6%	787	57.1%	915	52.2%	957	55.7%
Special education [BHAS data]	19,653	47.4%	2,425	41.1%	586	45.8%	593	39.2%	744	43.3%	681	43.4%	442	41.9%	548	39.7%	694	39.6%	741	43.2%
School-based behavioral health [BHAS data]	12,521	30.2%	1,880	31.8%	333	26.0%	426	28.2%	565	32.9%	507	32.3%	319	30.2%	434	31.5%	541	30.8%	586	34.1%
DCYF - Foster care	10,318	24.9%	995	16.8%	393	30.7%	291	19.2%	370	21.5%	292	18.6%	241	22.8%	232	16.8%	289	16.5%	233	13.6%
Inpatient Mental Health Services - All IP MH	6,586	15.9%	828	14.0%	197	15.4%	206	13.6%	228	13.3%	244	15.6%	156	14.8%	182	13.2%	232	13.2%	258	15.0%
Inpatient Mental Health Services - Non-CLIP	6,134	14.8%	762	12.9%	184	14.4%	197	13.0%	203	11.8%	219	14.0%	136	12.9%	168	12.2%	220	12.5%	238	13.9%
DCYF - BRS	5,381	13.0%	459	7.8%	202	15.8%	129	8.5%	164	9.5%	120	7.6%	119	11.3%	104	7.5%	115	6.6%	121	7.0%
Juvenile justice (JR, arrests, charges, convic.)	4,279	10.3%	351	5.9%	99	7.7%	93	6.1%	85	4.9%	87	5.5%	67	6.3%	76	5.5%	104	5.9%	104	6.1%
Developmental Disabilities Admin.	2,694	6.5%	378	6.4%	117	9.1%	82	5.4%	96	5.6%	111	7.1%	71	6.7%	79	5.7%	102	5.8%	126	7.3%
Substance use disorder services	2,231	5.4%	244	4.1%	60	4.7%	57	3.8%	61	3.6%	65	4.1%	51	4.8%	45	3.3%	68	3.9%	80	4.7%
Inpatient Mental Health Services - CLIP	888	2.1%	102	1.7%	25	2.0%	13	0.9%	36	2.1%	33	2.1%	29	2.7%	23	1.7%	20	1.1%	30	1.7%
<b>TOTAL with linked data available</b>	<b>41,467</b>	<b>100%</b>	<b>5,906</b>	<b>100%</b>	<b>1,279</b>	<b>100%</b>	<b>1,513</b>	<b>100%</b>	<b>1,718</b>	<b>100%</b>	<b>1,569</b>	<b>100%</b>	<b>1,056</b>	<b>100%</b>	<b>1,379</b>	<b>100%</b>	<b>1,754</b>	<b>100%</b>	<b>1,717</b>	<b>100%</b>
<b>TOTAL</b>	<b>41,536</b>		<b>5,917</b>		<b>1,281</b>		<b>1,516</b>		<b>1,720</b>		<b>1,573</b>		<b>1,059</b>		<b>1,381</b>		<b>1,757</b>		<b>1,720</b>	

NOTES: Due to a longer data lag for administrative data relative to screening data, time periods are defined differently for the upper and lower tables.