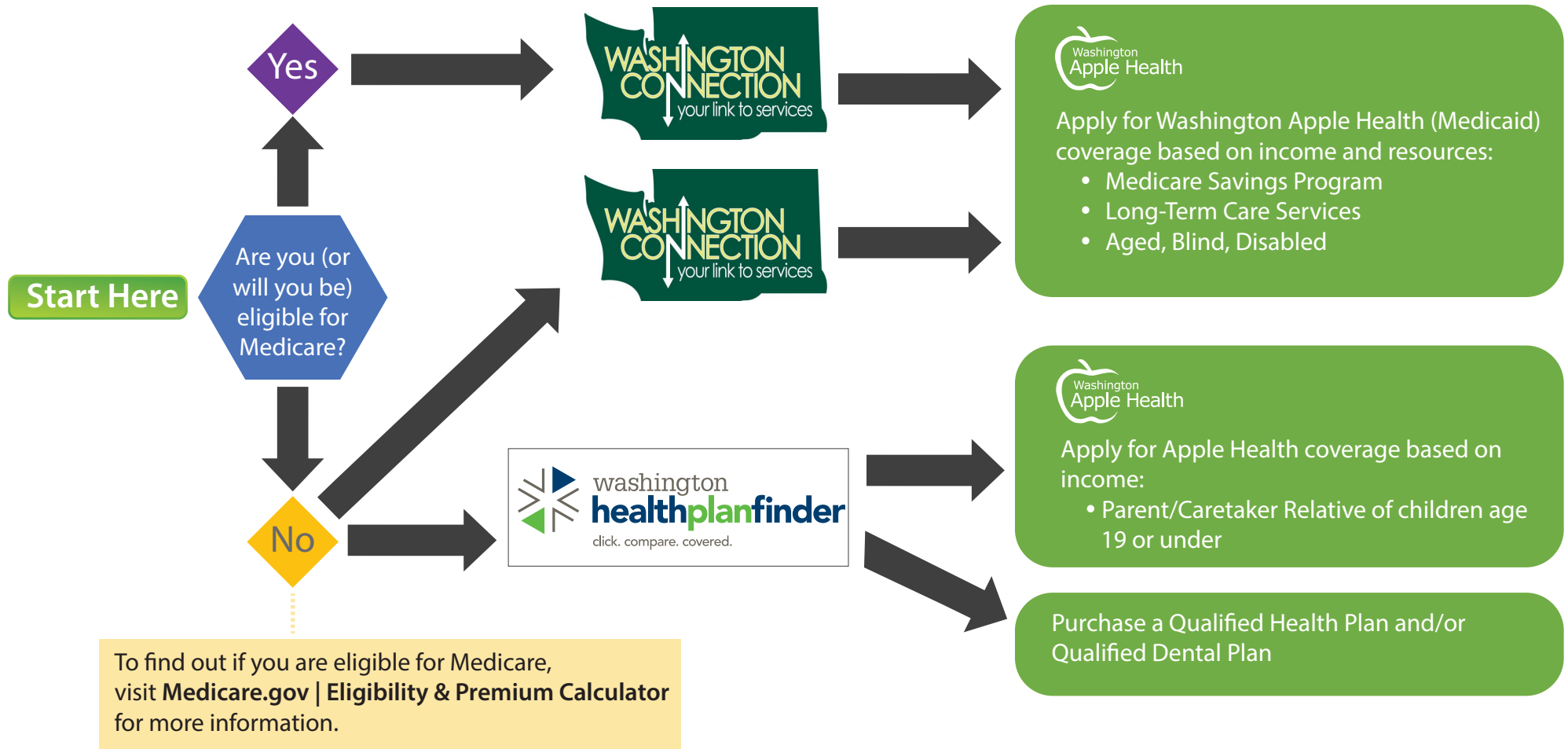


# Health coverage options for individuals aged 65 and older or Medicare eligible



**NOTE:** You may have other private coverage options such as Medicare Supplemental insurance, TriCare or insurance from a former employer.

**Note:** Application instructions on back

# How to apply or get help



How to apply:

Online: [www.washingtonconnection.org](http://www.washingtonconnection.org)

- Phone: 1-877-501-2233
- Visit a local Community Services Office (CSO):
- [www.dshs.wa.gov/esa/esa-find-office](http://www.dshs.wa.gov/esa/esa-find-office) Print and return a paper application:
  - [www.hca.wa.gov/assets/free-or-low-cost/18-005.pdf](http://www.hca.wa.gov/assets/free-or-low-cost/18-005.pdf)  
Mail: DSHS, PO BOX 11699, Tacoma, WA 98411-6699
  - Fax: 1-888-338-7410



How to apply:

• Online: <http://wahealthplanfinder.org>

- Phone: 1-855-923-4633
- Print and return a paper application:
  - [www.hca.wa.gov/assets/free-or-low-cost/18-001P.pdf](http://www.hca.wa.gov/assets/free-or-low-cost/18-001P.pdf)  
Mail: Washington Healthplanfinder, PO Box 946, Olympia, WA 98504
  - Fax: 1-855-867-4467



Questions or need help:

- Online: <https://www.insurance.wa.gov/contact-washington-state-shiba-program>
- Phone: 1-800-562-6900
- Visit a local SHIBA office: [www.insurance.wa.gov/find-local-shiba-office](http://www.insurance.wa.gov/find-local-shiba-office)
- Mail: SHIBA-OIC, PO Box 40255, Olympia, WA 98504-0255



Questions or need help:

- Online: <https://www.medicare.gov/>
- Phone: 1-800-633-4227