

Advance & Family Health Centers

Cooperative Organizations
Supporting Thriving Communities



About us

ORGANIZATION STRUCTURES THAT SUPPORT COOPERATION:

- Separate Boards with Common Members
- Shared CEO
- Separate Operations Structures with supportive purpose
- Supporting Mission & Vision Statements that often different perspectives, but serve a common purpose... A THRIVING LIFE!



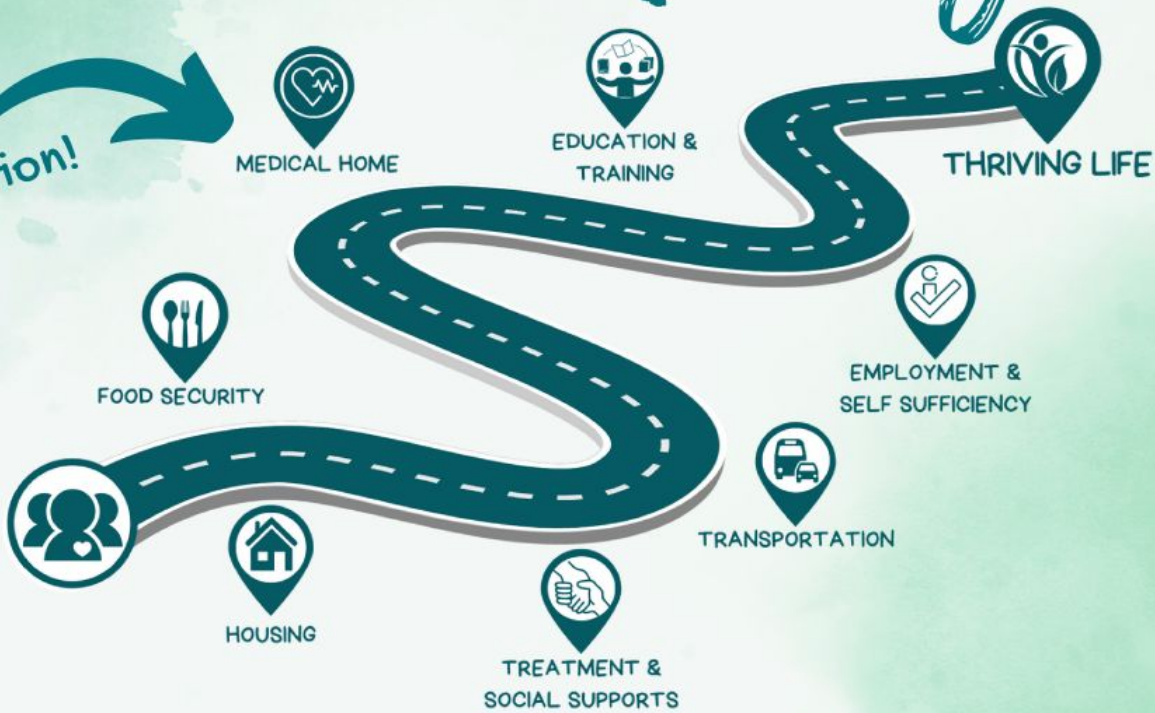
FAMILY
HEALTH CENTERS
YOUR FAMILY, YOUR HEALTH, YOUR CHOICE

ADVANCE



Advance Programs

Key Connection!



In Community Recovery Coaching

Recovery Navigator Program

Inclusion Criteria: Self-reported Substance Use Condition

Accept Referrals From: Law Enforcement (Pre-Arrest Diversion), Judicial System (Pre-Trial Diversion), Healthcare Agencies, Behavioral Health Agencies, Community Based Organizations, Faith Based Organizations, Concerned Citizens, Family Members, Self

Description: This program utilizes the unique skill set of people with lived experience (peers) to coach and mentor individuals suffering with substance use conditions. Our staff serve as resource brokers, connecting community members to services throughout their respective County, Region or State to ensure they are receiving services that support whole person wellness and their road to and through recovery.

Contact Info: Okanogan County (509) 426-3274, Grant County (800) 810-4138, Chelan/Douglas Counties (509) 715-3108

In Custody Recovery Coaching

Rural Jail Recovery Coach Services

Inclusion Criteria: Incarcerated with 60 days or less left in sentence, Self-reported Substance Use Condition, desire to engage in peer support services

Accept Referrals From: Medications for Opioid Use Disorder (MOUD) Program Staff, Jail Staff, Judicial System Partners (Prosecuting Attorneys, Defense Attorney's, Judges), Family Members, Community Organizations, Incarcerated Individuals (Self Referrals)

Description: Consistent with RNP on previous slide.

Contact Info: Okanogan County: (800) 846-2183
(Working to establish formal referral process for the region)

REGIONAL



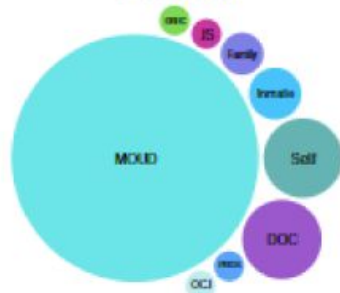
Monthly Number of Peers Receiving Recovery Coaching (In-Custody)



YTD Number of Peers Receiving Recovery Coaching (In-Custody)



In-Custody Referral Source Distribution



Total Number of Peers Transported to Inpatient Treatment Directly from Jail



50% are still receiving some form of peer support and are maintaining a stable recovery at the end of 2023.

Total Number of Peers Receiving Support Who Were Offered Drug Court Participation



18 Peers are still participating and in full compliance at the end of 2023.





Care Connect Washington

COVID Relief Network Morphing to Sustain a Social Care Network

Current Inclusion Criteria (We anticipate this will change): A self-report that describes how the individual has been impacted by the COVID-19 pandemic.

Accept Referrals From: Okanogan County Public Health and Other Healthcare Agencies. Self-referrals can be made via the State Department of Health Hotline.

Description: The program is designed to assist people who are impacted by the COVID-19 pandemic and could benefit from community-based care coordination services. This includes education around healthy eating, fresh grocery delivery, assistance with EBT application, assistance connecting to other community resources, such as behavioral health and medical providers.

Contact Info: Anyone making a referral should refer via Okanogan County Public Health at (509) 422-7140 or by calling the Department of Health hotline at (833) 453-0336.

Community Behavioral Health & Governor's Housing

Housing Support - Long & Short Term

Inclusion Criteria: Actively being discharged or recent discharge (within 60 days) from inpatient psychiatric facility. Documentation of behavioral health diagnoses (ideally a discharge summary from an inpatient facility). Required to actively participate in long term behavioral health support through OBHC or IHS. We can fund three people at a time, so please call to request an update on funding availability before promising inclusion to the patient.

Accept Referrals From: Inpatient psychiatric facilities, any other agency, self and family referrals

Description: This program is a long-term rental assistance program for people exiting an inpatient psychiatric facility who would otherwise be experiencing homelessness. The program is designed for long term support and only requires evaluation of the individual's income once every 12 months with the philosophy that the low barrier approach allows people to get back on their feet by providing support based on an annual review/evaluation vs. a review that might occur every time there is an income change in the course of that initial 12 months.

Contact Info: Alyssa Descoteaux at (509) 846-4410

OKANOGAN COUNTY



Rural Equity Project

Transportation

Inclusion Criteria: Self-reported challenges with or barriers to transportation associated with medical, behavioral health, SUD, and/or social services appointments reported to FHC or OBHC Case Manager. These transports are for local (Okanogan County) services only. Clients must be exhibiting socially appropriate behavior to be eligible for transport. Violent and aggressive behavior may be grounds for transportation refusal by Advance team members.

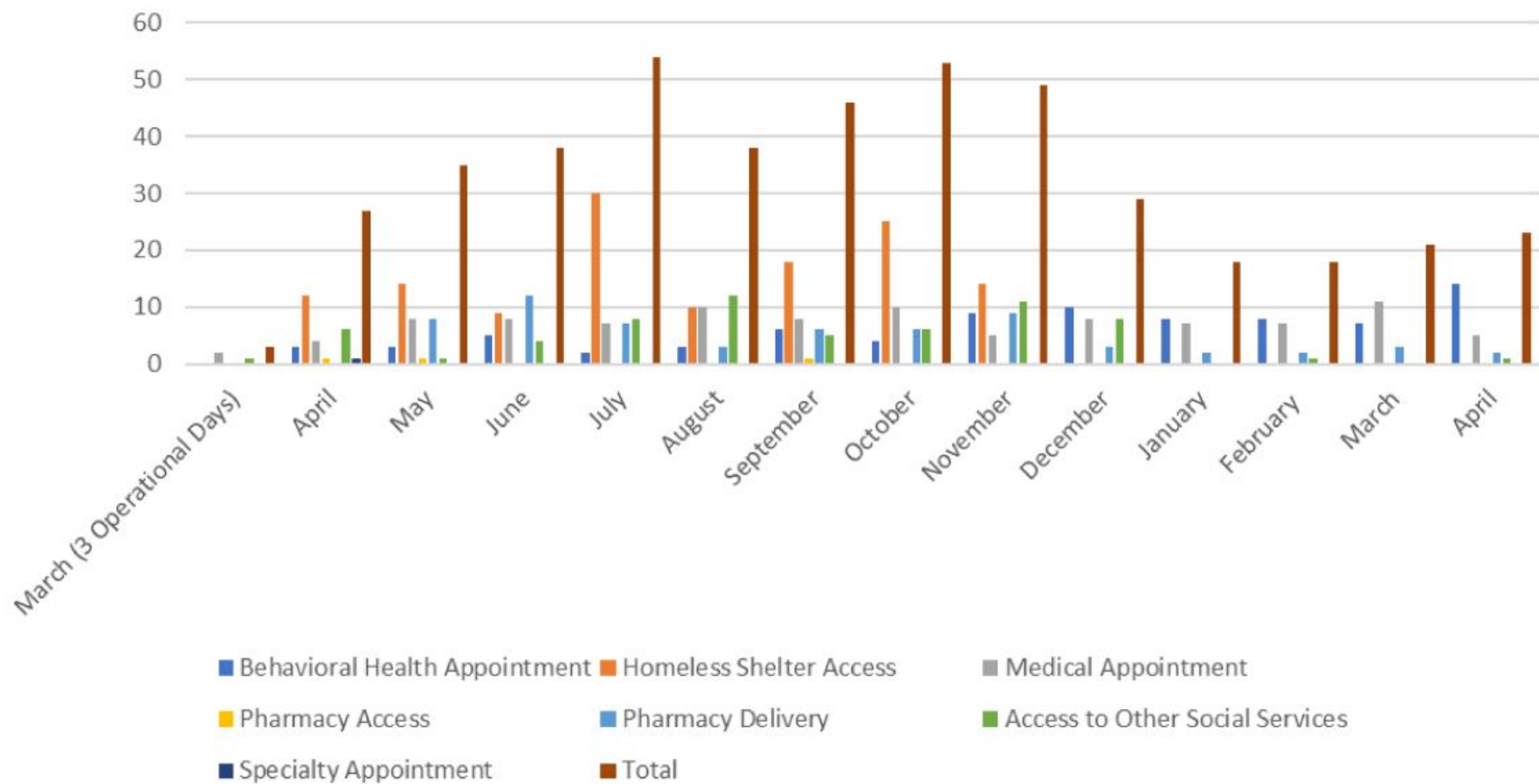
Accept Referrals From: Family Health Centers Team Members, OBHC and IHS Staff

Description: The program leverages the partnership between Okanogan County Public Health, Family Health Centers and Advance to fill local transportation gaps and needs that remain unmet by other transportation resources/providers. Our transportation coordinator works diligently to ensure we are the last resort for transportation services. There are bus passes sponsored by this funding at all FHC clinics (medical and dental) for distribution to patients in need.

Contact Info: Case Managers Only - Alyssa Descoteaux, Advance Grant Program Support & Transportation Coordinator (509) 846-4410

OKANOGAN COUNTY

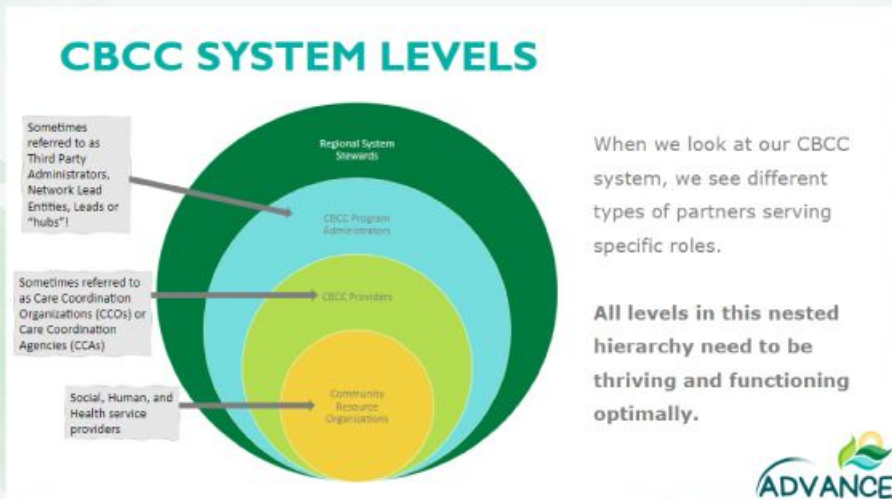
Rural Equity Project - Transportation



Regional Approach, Framework & Partnerships

Social Care Network Development

Decentralized HUB Structure Lead by Thriving Together North Central Washington



Questions?

 **FAMILY**
HEALTH CENTERS
YOUR FAMILY, YOUR HEALTH, YOUR CHOICE



ADVANCE