

# NTI Raises the Bar!

## Enhancing Mental Health Practice for Improved Family Stability and Well-Being



**National** Adoption Competency  
Mental Health **Training Initiative**

Advancing Practice for Permanency & Well-Being<sup>TM</sup>



LaShawnda Kilgore, PhD  
NTI Implementation Specialist



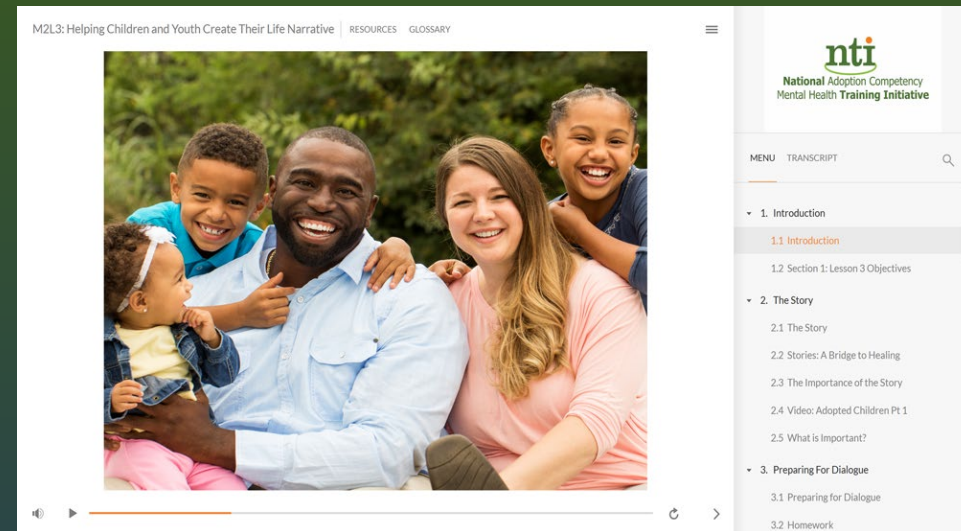
nurture.  
inspire.  
empower.

- ✓ Adoption competent clinical and case management services
- ✓ Adoption competency training for professionals
- ✓ Publications, educational programs, and resources

# 1. Web-Based

## 2. Self-Paced

### 3. FREE



- **Tools and resources** to support casework and clinical practice
- **Assessment and therapeutic strategies** to address behavioral challenges
- **A shared language** to foster collaboration between child welfare and mental health professionals

The American Academy of Pediatrics, [Healthy Foster Care American Initiative](#), identifies mental and behavioral health as the “greatest unmet health need for children and teens in foster care.”

2017 American Academy of Pediatrics; reported by National Conference of State Legislatures



## Child Welfare Training

- 20 hours
- 8 modules
- Casework focused
- CW Professionals across the continuum in public & private settings.

## Child Welfare Supervisor's Training

- 25 hours for supervisors
- 8 modules
- Supervision for casework

## Mental Health Training

- 30 hours
- 10 modules
- Clinically focused on assessment & treatment
- MH Professionals in public or private settings providing clinical services to children, youth and families experiencing foster care, adoption or guardianship.



## School-Based Mental Health Training



- 17.5 hours
- 8 modules
- Focused on more deeply understanding underlying causes of students' behavior
- School-based MH Professionals who want to more deeply understand and address the MH needs of students experiencing adoption, foster care, kinship or guardianship situations.
- In addition, it is relevant for students experiencing other types of trauma such as refugee, immigrant, and homeless situations and/or divorced families.



NTI was funded through a 5-year cooperative agreement between C.A.S.E. and the US Department of Health and Human Services, Administration for Children and Families, Children's Bureau, Grant #90CO1121.

- Understanding Children's Mental Health Challenges
- Loss and Grief
- Impact of Trauma
- Building Strong Attachments
- Positive Identity Formation
- Impact of Race, Culture and Diversity
- Providing Post-Adoption Supports
- **Assessment & Treatment Planning**
- **Therapeutic Parenting Strategies**



# NTI Competencies

# Impact on Practice – from NTI

## Mental Health Professionals

- ✓ More effective assessment and treatment planning
- ✓ Incorporating a family systems perspective
- ✓ Having difficult conversations, encouraging youth to express their feelings
- ✓ Better engagement of caregivers
- ✓ Incorporating positive adoption language



## Child Welfare Professionals

- ✓ Improved recruitment, training, and selection of Foster/Adoptive Parents
- ✓ Improved Assessments and Referrals
- ✓ More honest communication and understanding with youth and caregivers
- ✓ Improved confidence and self-efficacy

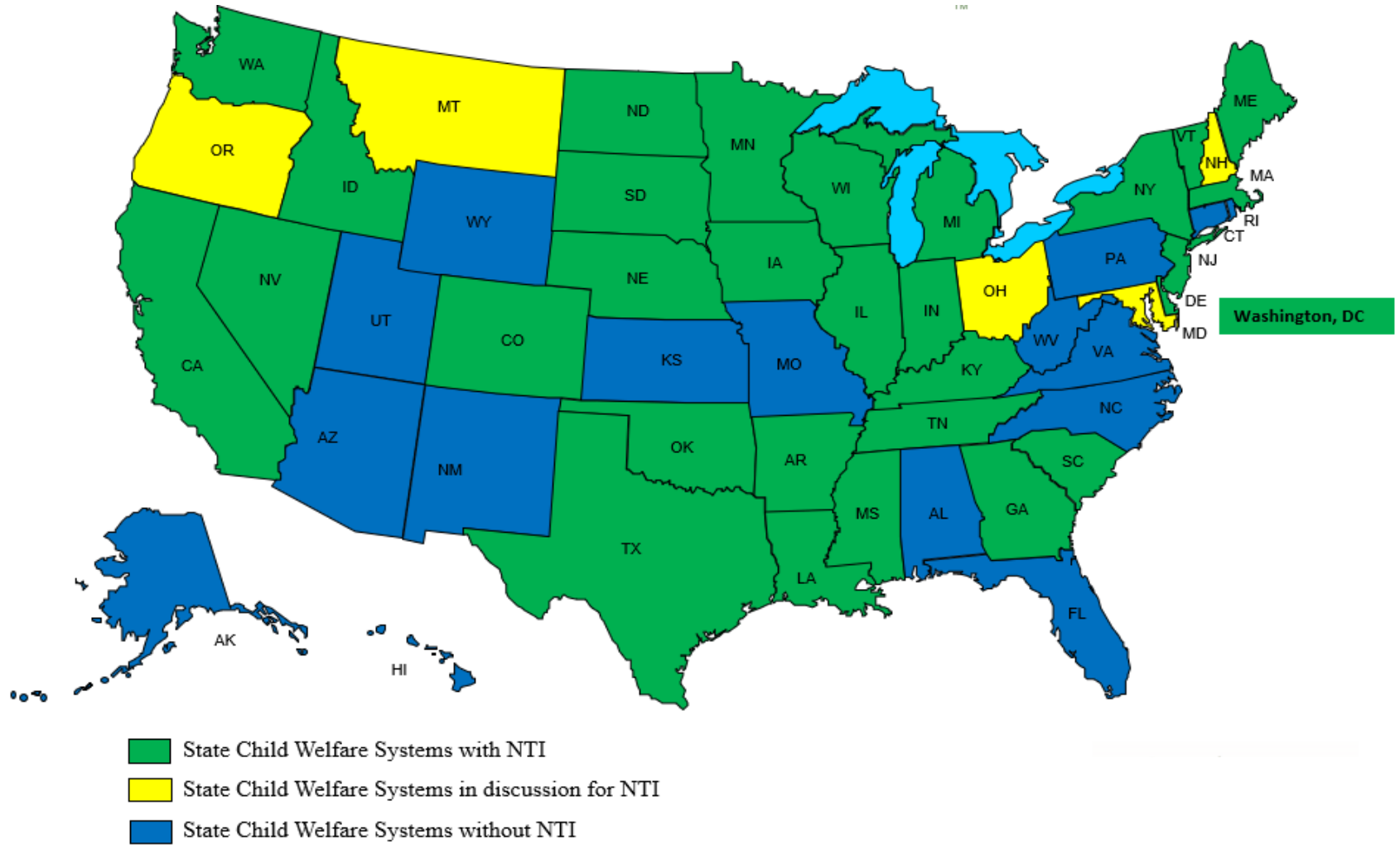
# Implementation Support



- ✓ Plan for implementation:
  1. How to integrate NTI?
  2. Who will access the training and when?
  3. How will training be messaged?
  4. Will training be mandated?
- ✓ Provide communications tools, encouragement, and support
- ✓ Troubleshoot integration challenges
- ✓ Provide transfer of learning and coaching support for staff and supervisors



# 25,000+ Professionals Have Enrolled in NTI Training Since 2017



# 4 Points Overview

1



## Promotes Systems Change:

NTI provides aligned content for CW and MH professionals; NTI is applicable across the CW continuum.

4



## Provides Post-training Supports

NTI offers transfer of learning tools to keep competencies “alive.”

2



## Includes a Robust Toolbox:

NTI Tools include trauma-informed, therapeutic strategies and resources to address behavioral challenges with children, youth, and families.

3



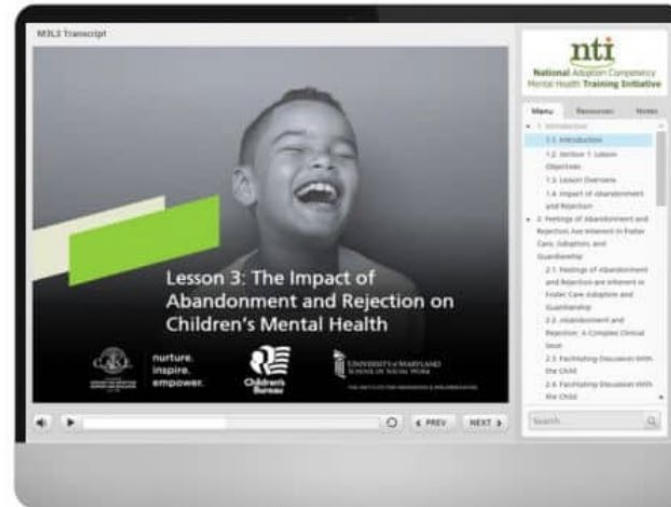
## Tested & Data Informed:

NTI is proven to build the capacity of the national workforce. In pilot testing, significant gaps in knowledge were filled and practice significantly improved.





Module 1 Lesson 5 →



Module 3 Lesson 3 →

[www.adoptionsupport.org/nti](http://www.adoptionsupport.org/nti)





**National** Adoption Competency  
Mental Health **Training Initiative**

**Advancing Practice** for Permanency & Well-Being<sup>TM</sup>

**LaShawnda Kilgore, PhD**

---

**NTI Training and Implementation Specialist**

**573.814.9483**

**[kilgore@adoptionssupport.org](mailto:kilgore@adoptionssupport.org)**



**[www.adoptionssupport.org/nti](http://www.adoptionssupport.org/nti)**