



Children and Youth Behavioral Health Work Group – Prenatal through Five Relational Health (P5RH) Subgroup

November 6, 2024

Glossary of Terms

AOC: Administrative Office of the Courts
ARL: Agency-Related Legislation
CPS: Child Protective Services
CYBHWG: Children Youth Behavioral Health Work Group
DCYF: WA Department of Children, Youth, and Families
DP: Decision Package
ECC: Early Childhood Courts
ECEAP: Early Childhood Education and Assistance Program
FRC: Family Resource Center
HCA: WA Health Care Authority
IECMH: Infant and Early Childhood Mental Health
IECMH-C: Infant and Early Childhood Mental Health Consultation
MSS: Maternal Support Services
NICU: Neonatal Intensive Care Unit
PCECN: Pierce County Early Childhood Network
RUBI: Research Units In Behavioral Intervention
SoS: Statements of Support
SUD: Substance Use Disorder
UW: University of Washington

Meeting Topics

Recap 10/14 Children Youth Behavioral Health Work Group (CYBHWG) Vote

Overview of Statements of Support (SoS) & Voting Process

Review agency Decision Package (DP)/Agency-Related Legislation (ARL) SoS proposals:

- Family therapy reimbursement rate (Health Care Authority (HCA))
- Staffing support for Maternity Support Services (MSS) & other maternal health programs (HCA)
- Support Community Pathways for Child Welfare Prevention (Department of Children, Youth, and Families (DCYF))

Presentation: Early Childhood Courts SoS Proposal

Presentation: Pierce County Early Childhood Network SoS Proposal

Vote on Statements of Support

Look-Ahead and Next Steps

Discussion Summary

Recap 10/14 CYBHWG Vote



1. The first draft [report](#) was submitted on November 1st, with all of the prioritized recommendations included.
 1. The overarching recommendations are at the top of the report.
 2. Legacy items were voted on and listed in the report after overarching, in priority order, with two P5 recommendations included:
 1. Expand Early (birth to three) Early Childhood Education and Assistance Program (ECEAP) was the number one prioritized legacy recommendation.
 2. Increasing investment in Infant and Early Childhood Mental Health Consultation (IECMH-C) (Holding Hope program) was prioritized as the 3rd legacy item.
 3. The new recommendations that the Work Group voted on and prioritized are listed next.
 1. There were 17 under consideration, and the work group prioritized 11 of them, two of which were from the P5 subgroup and two others that have implications for the Prenatal-5 continuum of care:
 1. P5RH Subgroup items included:
 1. Expand Maternity Support Services (MSS) regional coverage and provision of wraparound supports was tied for the 8th spot.
 2. Increase family psychotherapy reimbursement rate was voted as the 10th prioritized recommendation.
 2. Items that have implications for the prenatal-5 continuum of care (but not from this subgroup) included:
 1. The number one item – Research Units In Behavioral Intervention (RUBI) Parent Training Program pilot expansion, which will help serve children ages 0-5 who are experiencing symptoms.
 2. The sixth item – developing and piloting a dyadic benefit to allow mental health professionals to provide behavioral health supports to young children who may present with symptoms.
 2. There were 17 under consideration, and the work group prioritized 11 of them, two of which were from the P5 subgroup and two others that have implications for the Prenatal-5 continuum of care:
 1. P5RH Subgroup items included:
 1. Expand Maternity Support Services (MSS) regional coverage and provision of wraparound supports was tied for the 8th spot.
 2. Increase family psychotherapy reimbursement rate was voted as the 10th prioritized recommendation.
 2. Items that have implications for the prenatal-5 continuum of care (but not from this subgroup) included:
 1. The number one item – Research Units In Behavioral Intervention (RUBI) Parent Training Program pilot expansion, which will help serve children ages 0-5 who are experiencing symptoms.
 2. The sixth item – developing and piloting a dyadic benefit to allow mental health professionals to provide behavioral health supports to young children who may present with symptoms.
 4. Additional recommendations that were put forward but not prioritized are listed last, which included the following P5 items:
 1. Infant and Early Childhood Mental Health (IECMH) Alternative Payment Model pilot.
 2. Sustainable funding to enhance behavioral health capacity among providers supporting parents, infants and families following a Neonatal Intensive Care Unit (NICU) stay and or diagnosis of developmental delays.

Overview of SoS & Voting Process

1. A support item is any item that is being led by an entity external to the subgroup processess. It can be one of three things:
 - a. An agency DP or ARL that the subgroup wants to show support for.
 - b. An initiative being spearheaded by a community organization that the subgroup wants to show support for that is doing work in tandem to the work that the subgroup has pursued, but didn't want to duplicate any efforts or lack capacity to pursue.



- c. Any of the additional recommendations that were not prioritized by the work group and are not being taken on by the work group.
2. The Work Group will be voting on statements of support on November 12th.
3. The P5RH Subgroup needs to come to consensus on what items to show support for, that meet the scope of the subgroup and work group, as well as the criteria used for recommendations.
4. The goal is to achieve a 90% consensus from the subgroup on items to move forward to the Work Group, since the group hasn't been able to spend nearly as much time on these as with the recommendation development process.

Review agency DP/ARL SoS proposals

1. Family therapy reimbursement rate (HCA)
 - a. The need for increased family psychotherapy rates has been repeatedly elevated during focus groups that are currently being held as a part of the state-funded IECMH [People Powered Workforce](#) project.
 - b. Family psychotherapy is essential to implementation of evidence-based practices for IECMH treatment.
 - c. Feedback from focus groups have identified increased reimbursement for the associated codes as necessary for the sustainable implementation of these models with fidelity, which is consistent with statewide stakeholder engagement initiatives.
 - d. The P5 subgroup recommendation for family psychotherapy includes a reimbursement rate for Community Behavioral Health Agencies (CBHAs) that is 5% lower than that proposed by HCA in the DP.
 - i. The rationale for this difference was that while an increase of 25% for CBHAs still ensures that the family psychotherapy rates would be reimbursed at a higher rate than they're being paid for comparable individual psychotherapy rates, it reduces the overall cost to the state since the majority of IECMH services are provided within Community Behavioral Health Agencies.
 - ii. A lower overall cost would make the recommendation more appealing in the current fiscal climate.
 - iii. However, if aligning the funding request has a greater benefit than reducing the budget line item for the subgroup's recommendation that was submitted this year, the P5 subgroup could support an amendment of the recommendation before the final CYBHWG report is drafted.
2. Staffing support for Maternity Support Services (MSS) & other maternal health programs (HCA)
 - a. HCA received funding to implement some of the changes required by [SB 5580 \(2023\)](#), but didn't receive the FTE needed to support all of the work.
 - b. The ask is for \$1.6 million per biennium to help fully execute on the commitments of the bill, and to support MSS programs statewide.
3. Support Community Pathways for Child Welfare Prevention (DCYF)
 - a. This is a large DP around prevention of child welfare involvement.
 - b. The focus is on upstream pathways and prevention, rather than those who have gone through intake.



- c. The first key component is around Plan of Safe Care Community Pathways. This includes two components:
 - i. Support for families with substance exposed newborns.
 - 1. When a parent gives birth in a birthing hospital, and the infant is born substance exposed (with a non-illicit substance) without other risk factors, the birthing Hospital can connect those families with Help Me Grow – a system that connects families with programs and services in their community in partnership with a Family Resource Navigator.
 - 2. This program is currently at 35 of the 58 birthing hospitals in Washington, and this DP would allow DCYF to expand and onboard the rest of the hospitals.
 - ii. Support for substance using pregnant persons.
 - 1. This pathway connects substance using pregnant persons to substance use disorder (SUD) pregnancy service providers who provide service navigation and care coordination.
 - 2. This program is targeting higher risk families prior to the point of child welfare engagement to connect them to programs and services to help support their behavioral and mental health, and also prevent future engagement with the child welfare system.
 - 3. This also includes supporting family resource centers (FRCs) – the DP includes funding for five FRCs serving communities that fall into the top quintiles for Child Protective Services (CPS) screened-in intakes and office catchment areas with the highest placements of Native and Black Children.
 - 4. The DP also includes funds to support families with concrete goods, such as food and diapers, through the FRCs.
- d. Additionally, the DP includes support for DCYF to help support implementation of this work and will hopefully equip DCYF to pull down federal funding streams to help move prevention into community, rather than DCYF.

New: Early Childhood Courts SoS Proposal

- 1. The goal of this proposal is to provide more access and opportunity for families at risk of a dependency finding to be reunified.
- 2. Early childhood courts (ECC) provide a specialized court program designed to assist families with infants and toddlers who are navigating the dependency system.
- 3. ECC provides individual support for families with the help of a community coordinator, who navigates challenges by accessing the resources and community support needed for families to reunify.
- 4. [2SSB 5331 \(2021\)](#) has instituted ECC standards and practices for Washington State, which are now practiced in Clark, Kitsap, Pierce, Spokane, and Thurston counties.
- 5. Recent data shows that Washington families enrolled in ECCs have an increased reunification rate by 20% compared to regular dependency courts.
- 6. This proposed legislation aims to clarify standards by increasing ECC access through service age and ensuring courts are allowed to engage earlier.



- a. The hope is to serve more families and increase reunification rates.
7. Giannina Ferrara, Policy and TTA Manager for the Center for Children and Youth Justice, submitted this proposal and provided information for how this proposal aligns with the P5 subgroup criteria.
8. Discussion surrounding this item included the following:
 - a. A lot of funding for early childhood courts is through grant funding.
 - i. The legislation in Washington provides the governance and authority, while the funding is largely through grant funds that are utilized to implement the early childhood courts.
 - b. This ask is a policy change (amendment to an existing RCW) without a fiscal note attached, because ECC is utilizing the funds that they already have.
 - c.

Pierce County Early Childhood Network SoS Proposal

1. The Pierce County Early Childhood Network (PCECN) is requesting \$2 million to support Pierce County's cross-sector network of early childhood stakeholders.
2. The efforts to expand the system of support for Pierce County families are focused around investing in community-based efforts to integrate relationship-based supports into family-serving systems.
3. They are hoping to support continued resourcing of Family Resource Navigators through their networks, build a cross-sector network and bolster coordination among their 400 network partners.

Vote on Statements of Support

1. Results of the vote:
 - a. All SoS's move forward except ECC and PCECN.
 - a. There will be three support items going forward, all related to decision packages from agencies, and those will be those will be presented to the work group on November 12th and voted on.
 - b. Those that are approved will be included in the report on December 1st.
2. Discussion surrounding the vote included the following:
 - a. Subgroup staff followed up on all recommendations that did not move forward in the work group vote.

Look-Ahead and Next Steps

1. The next meeting is being rescheduled and will focus on advocacy efforts that the subgroup will be doing for the subgroup recommendations.
 - i. Subgroup leads have discussed bringing in a lawmaker to speak more on those items and what the subgroup can do as advocates moving forward to push things forward for the upcoming session.



2. The other half of the meeting will focus on a deep dive discussion and reflection on what the group has achieved this year, changes to the process, improvements that could be made going forward, and preparing for the next cycle.

Look Ahead: 24/25 Schedule

Next meeting: 12/18/2024 12PM-2PM

Expand Early Childhood Courts

Our shared goal is to provide more access and opportunity for families at risk of a dependency finding to be reunified. Early Childhood Courts (ECCs) provide a specialized court program designed to assist families with infants and toddlers who are navigating the dependency system. ECC provides individual support for families with the help of a Community Coordinator, who navigates challenges by accessing the resources and community support needed for families to reunify. Since 2021, 2SSB 5331 has instituted ECC standards and practices for Washington State. It is now practiced in Clark, Kitsap, Pierce, Spokane, and Thurston counties. This legislation aims to clarify standards by increasing ECC access through service age and ensuring courts are allowed to engage earlier. From this, we hope to serve more families and increase reunification rates.

Legislation Summary

Expand Service Age

Statutorily language is changed from program serving families with infants and toddlers for under 3 years old, to under 6 years old. This provides ECCs with more clarity on age standards and explicitly allows families with children aged 3 to 5 an opportunity to engage. From this age expansion, an estimated 114 more families are able to enroll in ECCs within the five counties.

Key Points:

- **Serves the majority of state dependency cases:** Filed in 2023, statewide dependency cases ages 0-2 made up 43% of all dependency cases. For ages 0 to 5, it represents the majority of state dependency cases at 59%.¹
- **Serving ages 0 to 5 is not new and works well:** While Kitsap county serves beyond age 2 for ages 0-3, other counties need further statute clarity to serve beyond that. In addition, other states such as Florida and North Carolina already have ECC programs that serve ages 0 to 5. Florida's most recent ECC evaluation for ages 0-5 found that ECC-involved children achieve reunification about 8.5 months shorter compared to non-ECC involved children.²

¹<https://public.tableau.com/app/profile/wscrr/viz/DependencyDashboard/MonthlyUpdates-CurrentYear>

²[https://ficw.fsu.edu/assets/documents/202021%20ECC%20Evaluation%20Deliverable%203_Final%20Report_ID_FINAL%20\(2\).pdf](https://ficw.fsu.edu/assets/documents/202021%20ECC%20Evaluation%20Deliverable%203_Final%20Report_ID_FINAL%20(2).pdf)

- **Aligns with state early childhood programs:** Washington State early childhood programs are typically for ages 0 to 5, so ECC could have aligned programs such as with ECEAP and Infant-Early Childhood Mental Health (IECMH). Other programs designed for ages 3 to 5 allow for more service connection opportunities for families as well.

Offer Service Earlier

Statutorily language is added to clarify and ensure ECCs with the option to provide services prior to dependency finding. This specifically allows any amount (a few or all) of service coordination for families that can include but is not limited to identifying community-based resources, supporting connection to resources, ensuring increased family time, referral to child early intervention services, etc.

Key Points:

- **Early family and child support is better:** Often families need to wait for an established dependency finding before given the ability to enroll in programs that provide support and services that address underlying factors of instability. Giving greater flexibility for families to engage in services and resources of their choice before a dependency finding puts them on a path to reunification and permanency sooner rather than later.
- **A court's ability to provide early services is based on capacity:** Pierce County already serves families early in the process before a dependency finding since they have capacity to do so. While other counties may have capacity, they need statute clarity in order to provide earlier services as an option.

For more information, contact:

- Nicholas Oakley, noakley@ccyj.org
- Giannina Ferrara, gferrara@ccyj.org

Improving the wellbeing of children and families in Pierce County.



PIERCE COUNTY
EARLY CHILDHOOD
NETWORK

PCECN

PIERCE COUNTY EARLY CHILDHOOD NETWORK

SCAN TO
LEARN MORE



2025 Legislative Ask

This legislative session, Pierce County Early Childhood Network (PCECN) requests **\$2 million to support our county's cross-sector network of early childhood stakeholders.** Our efforts to expand the system of support for Pierce County families are focused around investing in community-based efforts to integrate relationship-based supports into family-serving systems.

Where the Dollars Go



Bolstering Coordination and Collaboration for Collective Impact

PCECN proudly cultivates community action with over **400 network partners.**



Centering Families and Community Through a Cross-Sector Network

PCECN's unique cross-sector infrastructure helped us **connect with over 5,000 families and community partners** through outreach events alone between July 2023 – June 2024.



Creating Ways to Provide Whole Family Healthcare in Pierce County

In an effort to provide whole family healthcare, our team of healthcare providers co-created and began using the Provider Referral Form. **1,723 families have been connected to our Family Resource Navigators** through this form since its inception in June of 2020.

R.O.I. for WA

Child Care Capacity

Through the Child Care Capacity Initiative, PCECN is supporting 28 local providers in **opening 745 new child care slots in Pierce County.**

Uplifting Community Voice

PCECN is an essential conduit between our local communities and state decision-makers, elevating the wisdom of those most impacted.

Family Resource Navigators

From July 2023 – June 2024, Family Resource Navigators at **South Sound 2-1-1 answered 1,960 calls**, providing basic needs support for families.

Did You Know?

The **PCECN Diaper Bank Network serves over 600 families and 1,000 children with diapering supplies every month.** Since June 2020, we have distributed **over 1.5 MILLION DIAPERS** to families in **Pierce County.**



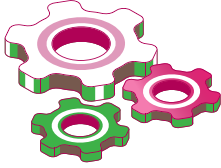
What families say matters in this work. Families have a voice, and that has been the case from the start with PCECN.



Mary Ann Woodruff, MD, FAAP, Pediatrician, Pediatrics NW



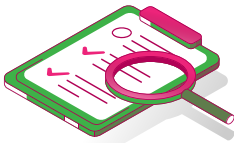
1



Why We Exist

As our name states, the first 5 years of life are fundamental. Our mission is to uphold communities in achieving their collective goals for children and families - and in doing so, strengthen Washington's early childhood ecosystems.

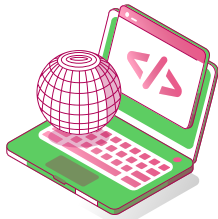
2



What We Do

First 5 FUNdamentals provides a vital and trusted foundation for Washington's early childhood stakeholders through our leadership of collaborative initiatives and programs. We mobilize funding, provide network facilitation and project management, weave collaborative community partnerships, and build public will.

3



Our Initiatives and Programs

We currently lead the following initiatives and programs: **Washington Communities for Children**, **Pierce County Early Childhood Network**, and **Family Connects Pierce County**. First 5 FUNdamentals also provides fiscal sponsorship to other early childhood-focused projects across the state.

4



Cross-Sector Collaboration

By strengthening cross-sector connection and collaboration, our initiatives and programs provide an essential way of organizing with community to meet the complexities around early childhood in Washington state, resulting in generational impact.

5



Uplifting Community Voice

Our community-centered, network approach allows us to connect authentically with communities across the state, ensuring those most impacted directly shape the policies and structures that affect their lives and their children's future.