

Delivery Statistics Report (2024 Births)

Legacy Salmon Creek Medical Center

Vancouver, WA Clark County

Perinatal Level of Care: Level 3

Deliveries and Medicaid Status

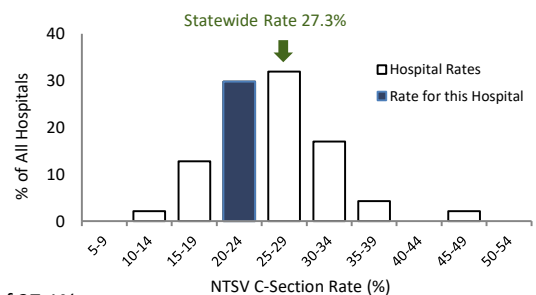
	2022	2023	2024	3-year TOTAL	Net Change '23 to '24
Total Deliveries	3,418	3,341	3,252	10,011	-89
Deliveries with Medicaid-paid Pregnancy Care	1,519	1,537	1,320	4,376	-217
Percent of Deliveries with Medicaid-paid Pregnancy Care	44%	46%	41%	44%	-5%
Percent of Deliveries with Medicaid-paid Pregnancy Care in County	47%	48%	45%	46%	-3%

C-Sections Among Nulliparous Term Singleton Vertex (NTSV) Deliveries

	2022	2023	2024	Net Change '23 to '24	3-year
NTSV Deliveries	1,079	961	1,036	75	3,076
NTSV C-Section Rates					
Rate for this Hospital	23.6%	27.7%	24.5%	-3.2%	25.2%
Level 3 Hospitals	27.1%	27.9%	28.3%	0.4%	27.7%
Hospitals Statewide	26.6%	27.3%	27.1%	-0.2%	27.0%

This hospital's 2024 NTSV C-Section rate of 24.5% was lower than the statewide rate of 27.1%.

Distribution of NTSV C-Section Rates
2024 Births at WA Non-Military Hospitals

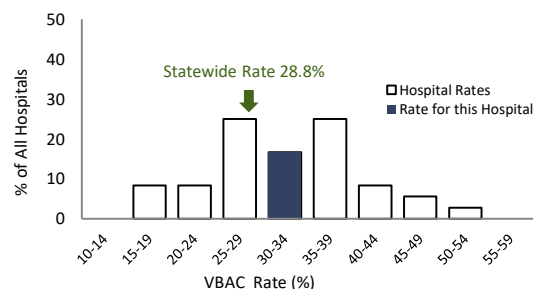


Vaginal Births After Cesarean (VBAC) for Term Singleton Vertex Deliveries

	2022	2023	2024	Net Change '23 to '24	3-year
Deliveries Post-C-Sec	365	307	319	12	991
VBAC Rates					
Rate for this Hospital	35.1%	35.5%	34.2%	-1.3%	34.9%
Level 3 Hospitals	27.6%	28.3%	28.4%	0.2%	28.1%
Hospitals Statewide	28.6%	27.9%	28.8%	1.0%	28.4%

This hospital's 2024 VBAC rate of 34.2% was higher than the statewide rate of 28.8%.

Distribution of VBAC Rates
2024 Births at WA Non-Military Hospitals

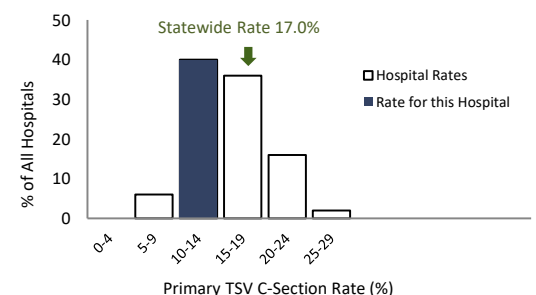


Primary C-Sections Among Term Singleton Vertex (TSV) Deliveries

	2022	2023	2024	Net Change '23 to '24	3-year
TSV Deliveries/No Prior C	2,411	2,334	2,326	-8	7,071
Primary C-Section Rates					
Rate for this Hospital	14.2%	14.7%	14.2%	-0.5%	14.3%
Level 3 Hospitals	16.9%	17.3%	17.7%	0.3%	17.3%
Hospitals Statewide	16.5%	16.8%	17.0%	0.2%	16.8%

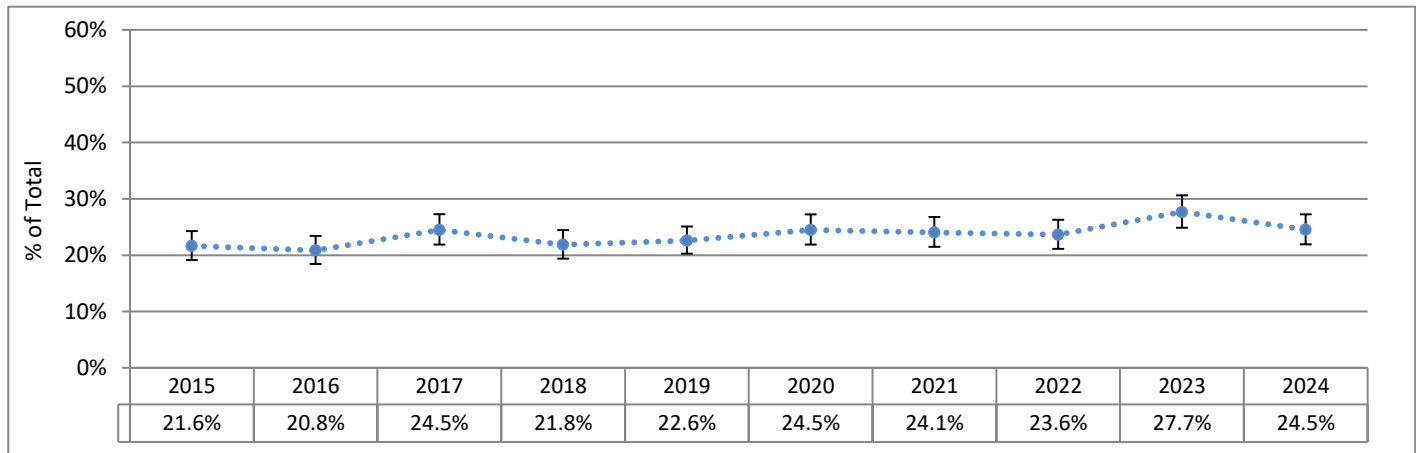
This hospital's 2024 Primary C-Section rate of 14.2% was lower than the statewide rate of 17.0%.

Distribution of TSV Primary C-Section Rates
2024 Births at WA Non-Military Hospitals

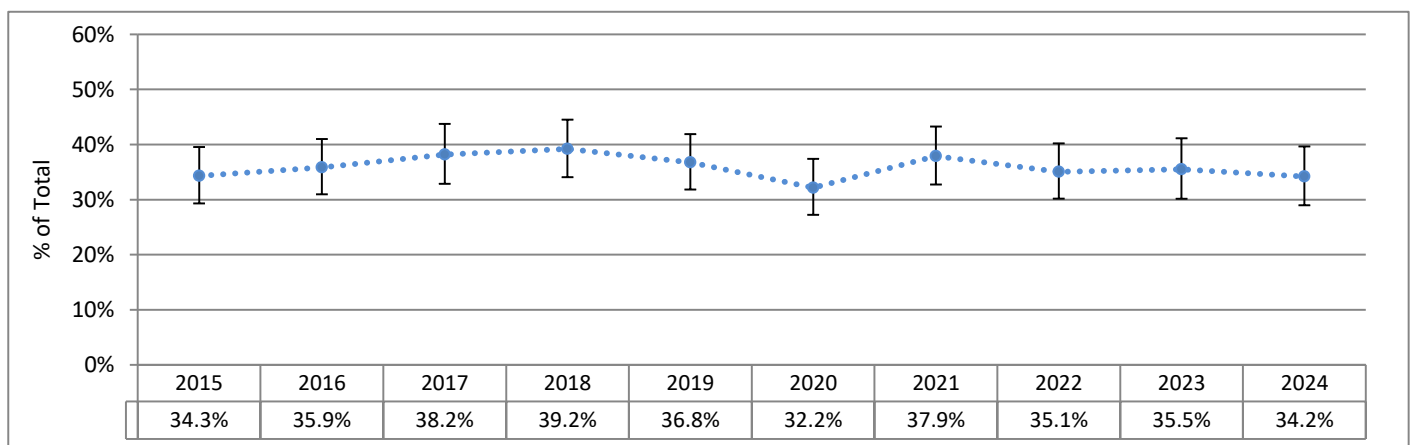


Legacy Salmon Creek Medical Center

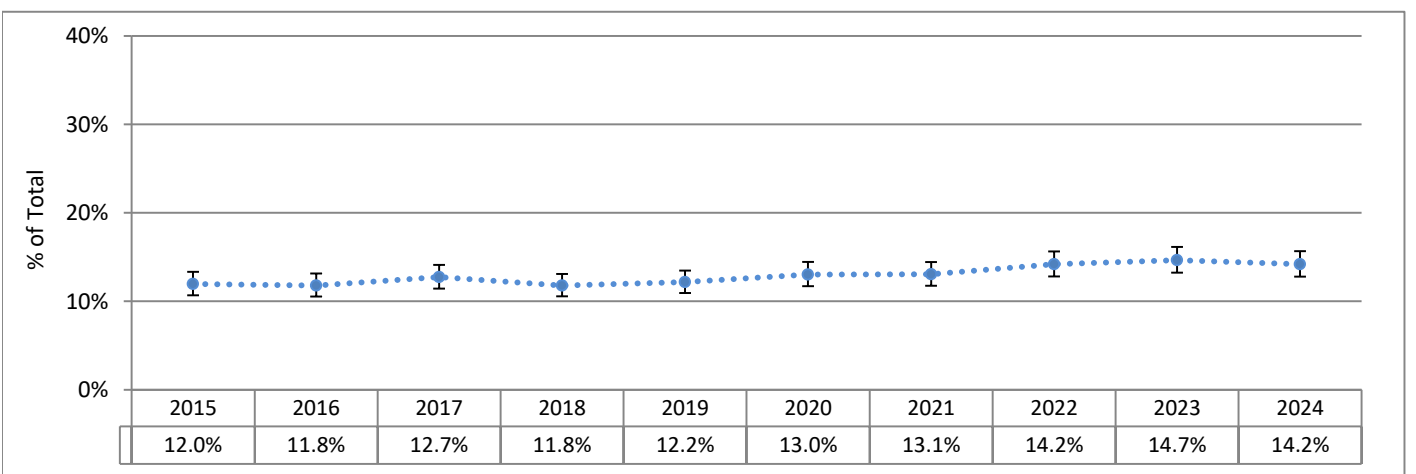
C-Sections Among Nulliparous Term Singleton Vertex (NTSV) Deliveries 2015 - 2024
Hospital Rate with 95% Confidence Limits



Vaginal Birth After Cesarean Among Term Singleton Vertex (TSV) Deliveries 2015 - 2024
Hospital Rate with 95% Confidence Limits



Primary C-Sections Among Term Singleton Vertex (TSV) Deliveries 2015 - 2024
Hospital Rate with 95% Confidence Limits

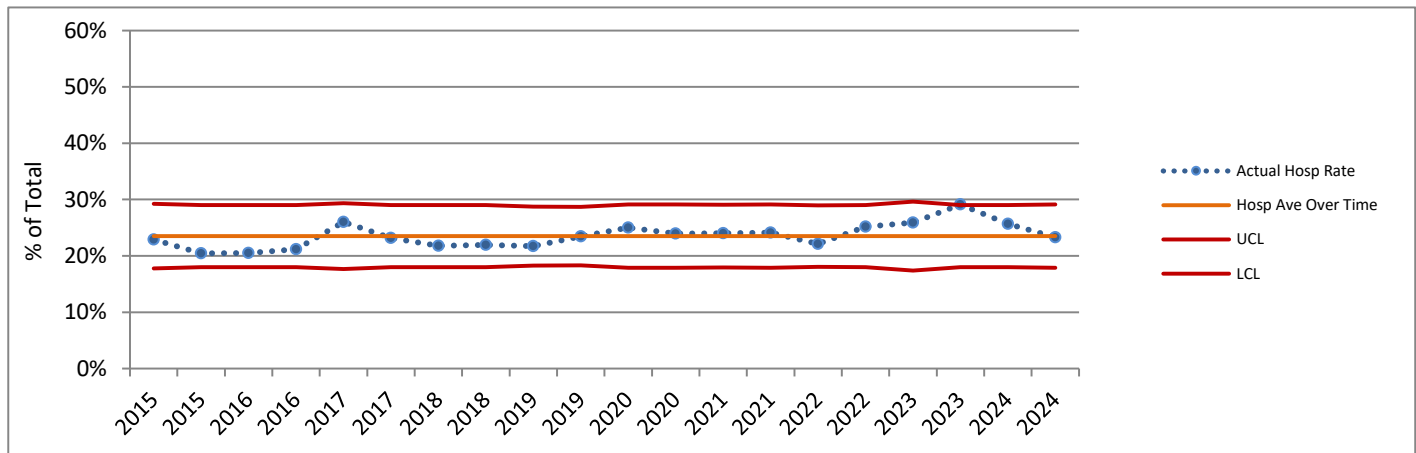


95% Confidence Limits show the range within which a data point could reasonably be the result of random variation. Points outside of this range are considered to differ significantly from the point for which the confidence limit is calculated.

Legacy Salmon Creek Medical Center

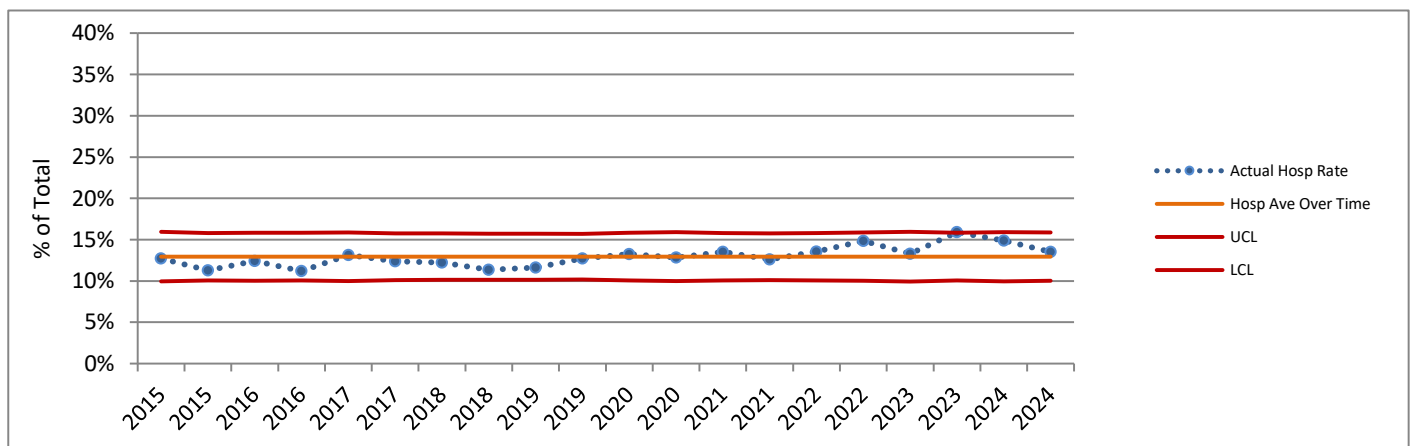
C-Sections Among Nulliparous Term Singleton Vertex (NTSV) Deliveries 2015 - 2024 (Six-Month Intervals)

Actual Hospital Rate Compared to Hospital Average Across Time



Primary C-Sections Among Term Singleton Vertex (TSV) Deliveries 2015 - 2024 (Six-Month Intervals)

Actual Hospital Rate Compared to Hospital Average Across Time



Charts based on the Hospital average over time are not presented where the Hospital number of deliveries for any six-month period did not meet the standard recommended size for upper (UCL) and lower (LCL) control lines based on 3 standard deviations. Rates above or below the red lines show a greater difference from the average than do those between the red lines.

DATA SOURCES AND DEFINITIONS: Certificates for live births and fetal deaths were provided by the DOH Center for Health Statistics and included in the First Steps Database. Medicaid status was determined by individual-level linkage to Medicaid claims/encounters and eligibility data performed by the First Steps Database Team. Years refer to calendar years. 2024 vital records data are preliminary.

Excludes births outside of hospitals, in military facilities, and in facilities that do not typically perform deliveries. C-Section measures exclude cases where the birthing parent was transferred to higher level care for medical or fetal indicators for delivery and births where intended place of birth was other than hospital.

** = Rate not shown due to small numbers.

Perinatal Level of Care designation is as of 2024 for all years shown. **Total Deliveries** includes live births and fetal deaths after 20 weeks' gestation. **Medicaid** refers to births to individuals with Medicaid-paid pregnancy care claims/encounters or individuals who were enrolled in a state-contracted capitated managed care plan for at least three of the last six months before delivery. **Distribution charts** are based on non-military hospitals with at least 20 denominator deliveries. **C-Sections (NTSV)** is the percent of Cesarean sections among nulliparous, term, singleton, liveborn, vertex deliveries. **Term** is defined as gestational age of at least 37 completed weeks. For reports as of November 2015, the gestational age used for term designation is based on obstetric estimate of gestation. **Vaginal Births After Cesarean (VBAC)** is the percent of vaginal births among live births to appropriate candidates. Individuals whose pregnancies were at term, had a single fetus with vertex presentation, and who had one prior C-section were considered **appropriate candidates for VBAC**. Number of prior C-sections is determined by Birth Certificate number reported and by longitudinal linkage. **Primary C-Sections** is the percent of Cesarean sections among term, singleton, liveborn, vertex deliveries to individuals with no prior C-sections.