

Delivery Statistics Report (2022 Births January-June) Multicare Covington Medical Center

Covington, WA King County

Perinatal Level of Care: Level 1 Non-CAH

Deliveries and Medicaid Status

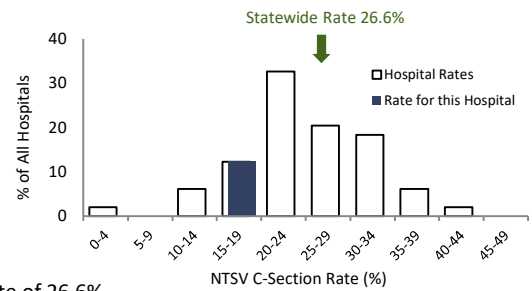
| | 2020 | 2021 | Jan-Jun 2022 | 3-year TOTAL | Net Change '21 to '22 |
|---|------|------|--------------|--------------|-----------------------|
| Total Deliveries | 261 | 280 | 154 | 695 | NA |
| Deliveries with Medicaid-paid Pregnancy Care | 134 | 127 | 87 | 348 | NA |
| Percent of Deliveries with Medicaid-paid Pregnancy Care | 51% | 45% | 56% | 50% | 11% |
| Percent of Deliveries with Medicaid-paid Pregnancy Care in County | 33% | 32% | 33% | 32% | 1% |

C-Sections Among Nulliparous Term Singleton Vertex (NTSV) Deliveries

| | 2020 | 2021 | Jan-Jun 2022 | Net Change '21 to '22 | 3-year |
|-----------------------------|-------|-------|--------------|-----------------------|--------|
| NTSV Deliveries | 102 | 131 | 61 | NA | 294 |
| NTSV C-Section Rates | | | | | |
| Rate for this Hospital | 13.7% | 9.2% | 19.7% | 10.5% | 12.9% |
| Level 1 Non-CAH Hospitals | 24.5% | 25.8% | 26.4% | 0.5% | 25.4% |
| Hospitals Statewide | 25.0% | 25.5% | 26.6% | 1.1% | 25.5% |

This hospital's Jan-Jun 2022 NTSV C-Section rate of 19.7% was lower than the statewide rate of 26.6% .

Distribution of NTSV C-Section Rates
2022 Births (Jan-Jun) at WA Non-Military Hospitals

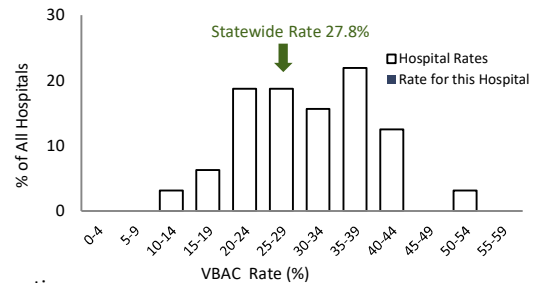


Vaginal Births After Cesarean (VBAC) for Term Singleton Vertex Deliveries

| | 2020 | 2021 | Jan-Jun 2022 | Net Change '21 to '22 | 3-year |
|---------------------------|-------|-------|--------------|-----------------------|--------|
| Deliveries Post-C-Sec | <11 | <11 | <11 | NA | 19 |
| VBAC Rates | | | | | |
| Rate for this Hospital | ** | ** | ** | ** | ** |
| Level 1 Non-CAH Hospitals | 20.1% | 13.3% | 22.0% | 8.7% | 17.8% |
| Hospitals Statewide | 27.4% | 27.7% | 27.8% | 0.1% | 27.6% |

This hospital does not provide planned vaginal birth delivery services after a prior cesarean section.

Distribution of VBAC Rates
2022 Births (Jan-Jun) at WA Non-Military Hospitals

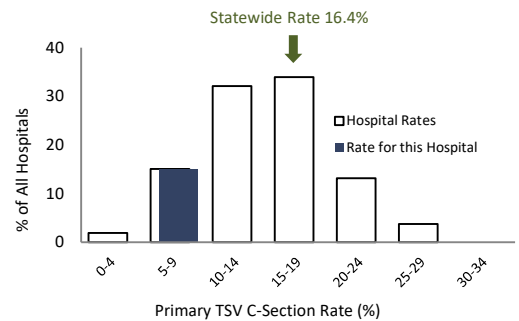


Primary C-Sections Among Term Singleton Vertex (TSV) Deliveries

| | 2020 | 2021 | Jan-Jun 2022 | Net Change '21 to '22 | 3-year |
|--------------------------------|-------|-------|--------------|-----------------------|--------|
| TSV Deliveries/No Prior C | 230 | 255 | 143 | NA | 628 |
| Primary C-Section Rates | | | | | |
| Rate for this Hospital | 6.5% | 5.9% | 9.1% | 3.2% | 6.8% |
| Level 1 Non-CAH Hospitals | 13.7% | 14.7% | 15.3% | 0.6% | 14.4% |
| Hospitals Statewide | 15.1% | 15.5% | 16.4% | 0.9% | 15.5% |

This hospital's Jan-Jun 2022 Primary C-Section rate of 9.1% was lower than the statewide rate of 16.4% .

Distribution of TSV Primary C-Section Rates
2022 Births (Jan-Jun) at WA Non-Military Hospitals

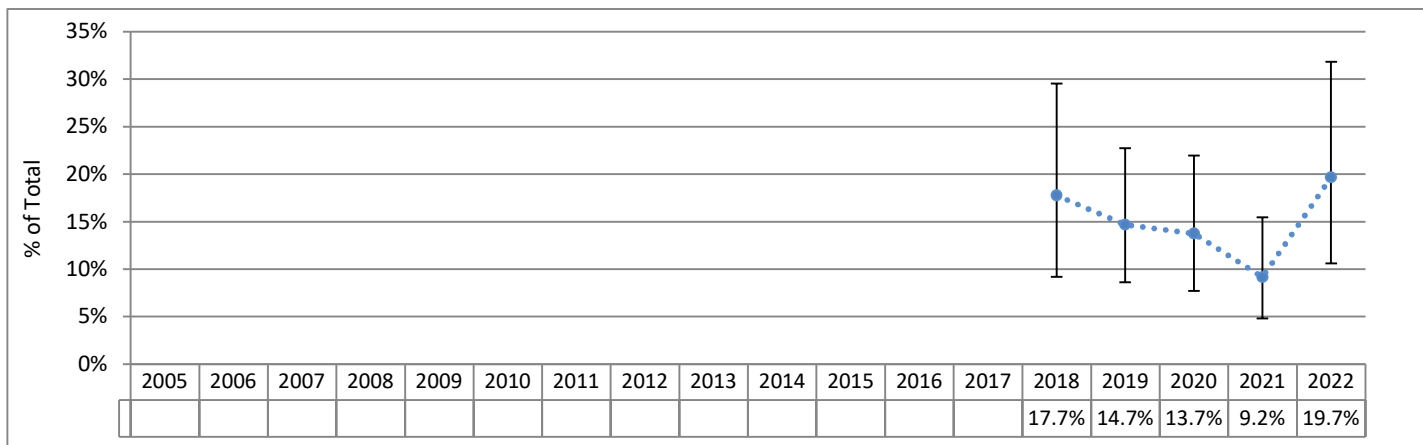


Multicare Covington Medical Center

Chart(s) Not Displayed Due to Small Numbers

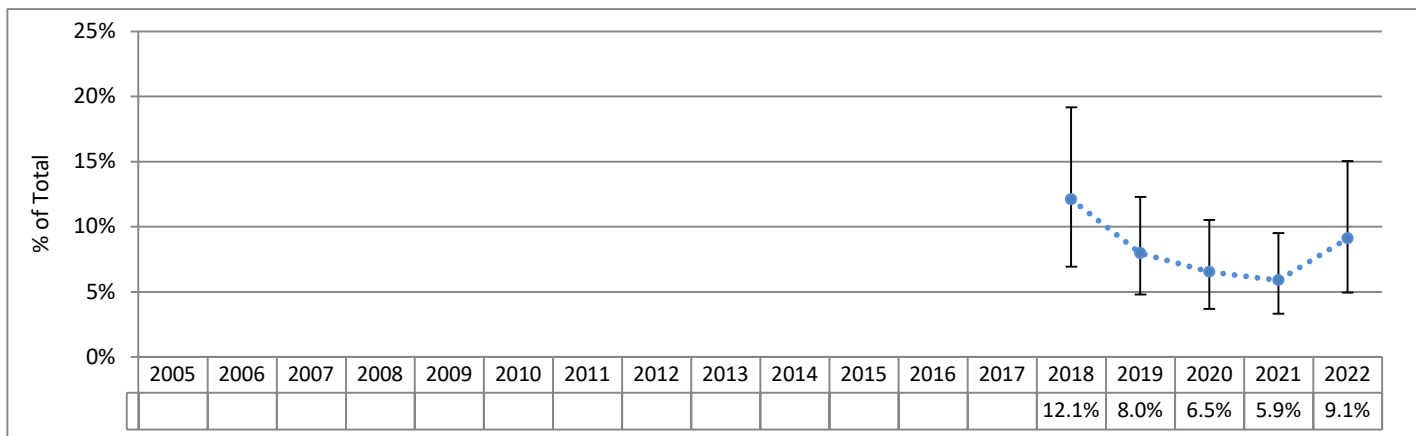
C-Sections Among Nulliparous Term Singleton Vertex (NTSV) Deliveries 2005 - June 2022

Hospital Rate with 95% Confidence Limits



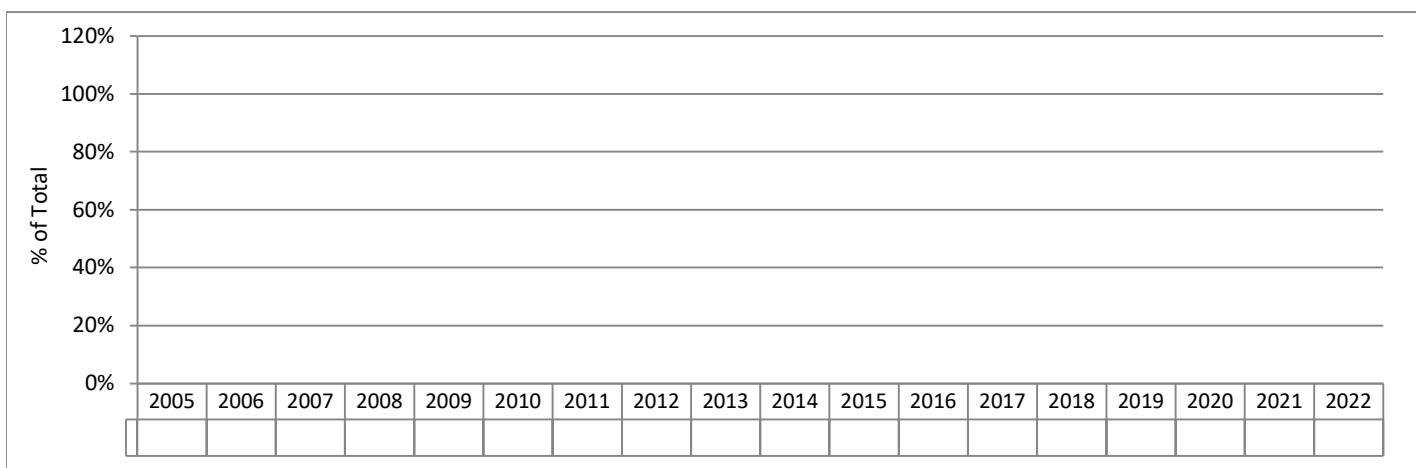
Primary C-Sections Among Term Singleton Vertex (TSV) Deliveries 2005 - June 2022

Hospital Rate with 95% Confidence Limits



Vaginal Birth After Cesarean Among Term Singleton Vertex (TSV) Deliveries 2005 - June 2022

Hospital Rate with 95% Confidence Limits

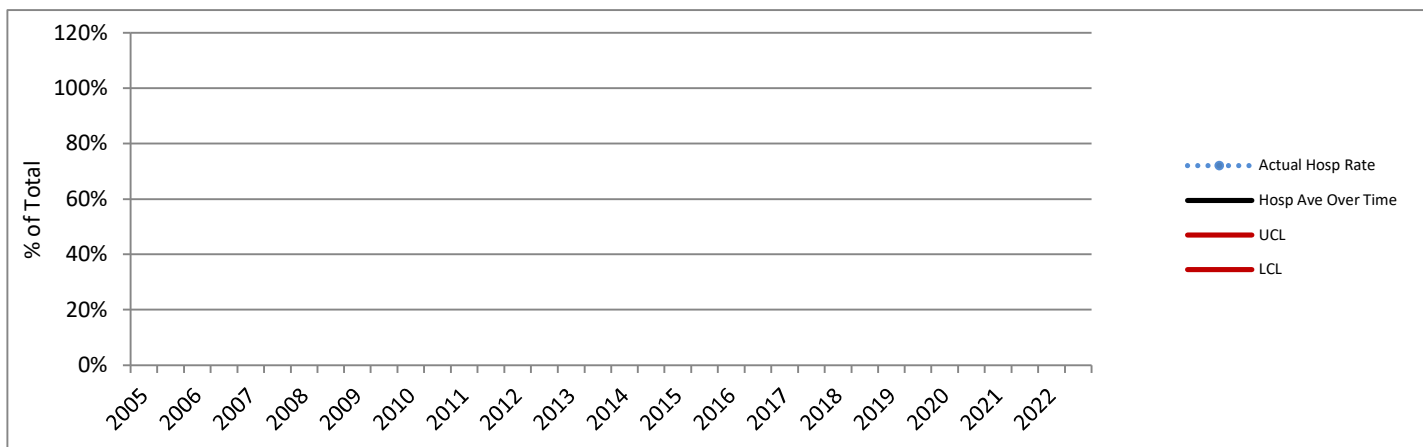


95% Confidence Limits show the range within which a data point could reasonably be the result of random variation. Points outside of this range are considered to differ significantly from the point for which the confidence limit is calculated, since there is only a 5%

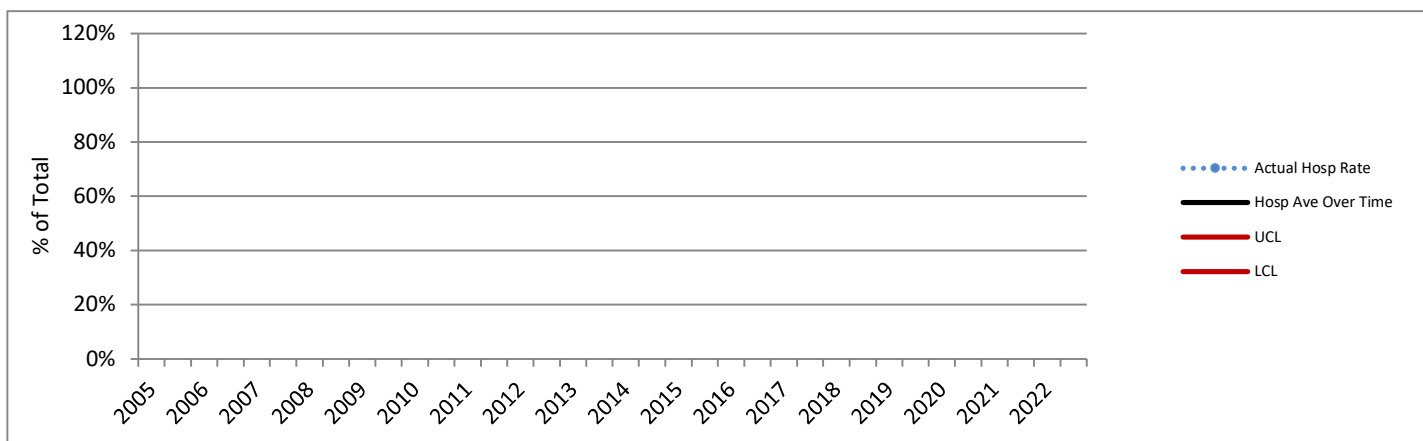
Multicare Covington Medical Center

Charts Not Displayed Due to Small Numbers for at Least Some Six-Month Intervals

C-Sections Among Nulliparous Term Singleton Vertex (NTSV) Deliveries 2005 - June 2022 (Six-Month Intervals)
Actual Hospital Rate Compared to Hospital Average Across Time



Primary C-Sections Among Term Singleton Vertex (TSV) Deliveries 2005 - June 2022 (Six-Month Intervals)
Actual Hospital Rate Compared to Hospital Average Across Time



Charts based on the Hospital average over time are not presented where the Hospital number of deliveries for any six-month period did not meet the standard recommended size for upper (UCL) and lower (LCL) control lines based on 3 standard deviations. Rates above or below the red lines show a greater difference from the average than do those between the red lines.

DATA SOURCES AND DEFINITIONS: Certificates for live births and fetal deaths were provided by the DOH Center for Health Statistics and included in the First Steps Database. Medicaid status was determined by individual-level linkage to Medicaid claims and eligibility performed by the First Steps Team. **2022 birth data are preliminary records for January - June.** Years refer to calendar years.

Excludes births outside of hospitals, in military facilities, and in facilities that do not typically perform deliveries. C-Section measures exclude cases where the birthing parent was transferred to higher level care for medical or fetal indicators for delivery and births where intended place of birth was other than hospital.

** = Rate not shown due to small numbers.

Perinatal Level of Care designation is as of 2022 for all years shown. **Total Deliveries** includes live births and fetal deaths after 20 weeks' gestation. **Medicaid** refers to births to individuals with Medicaid-paid pregnancy care claims/encounters or individuals who were enrolled in a state-contracted capitated managed care plan for at least three of the last six months before delivery. **Distribution charts** are based on non-military hospitals with at least 20 denominator deliveries. **C-Sections (NTSV)** is the percent of Cesarean sections among nulliparous, term, singleton, liveborn, vertex deliveries. **Term** is defined as gestational age of at least 37 completed weeks. The gestational age used for term designation is based on obstetric estimate of gestation. **Vaginal Births After Cesarean (VBAC)** is the percent of vaginal births among live births to appropriate candidates. Individuals whose pregnancies were at term, had a single fetus with vertex presentation, and who had one prior C-section were considered **appropriate candidates for VBAC**. Number of prior C-sections is determined by Birth Certificate number reported and by longitudinal linkage. **Chart comparison VBAC Rates** are limited to hospitals that offer planned vaginal birth delivery after a prior Cesarean section (VBAC). **Primary C-Sections** is the percent of Cesarean sections among term, singleton, liveborn, vertex deliveries to individuals with no prior C-sections.