

# Delivery Statistics Report (2019 Preliminary Births) Northwest Hospital And Medical Center

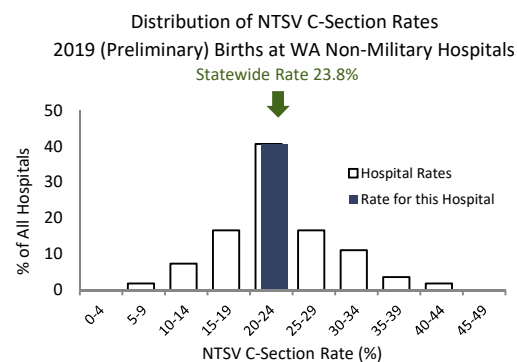
Seattle, WA King County  
Perinatal Level of Care: Level 2



	2017	2018	2019	3-year TOTAL	Net Change '18 to '19
Total Deliveries	1,076	1,085	1,085	3,246	0
Deliveries with Medicaid-paid Maternity Care	285	270	234	789	-36
Percent Medicaid Deliveries	26%	25%	22%	24%	-3%
Percent Medicaid for Deliveries in this County	35%	34%	32%	34%	-2%

## C-Sections Among Nulliparous Term Singleton Vertex (NTSV) Deliveries

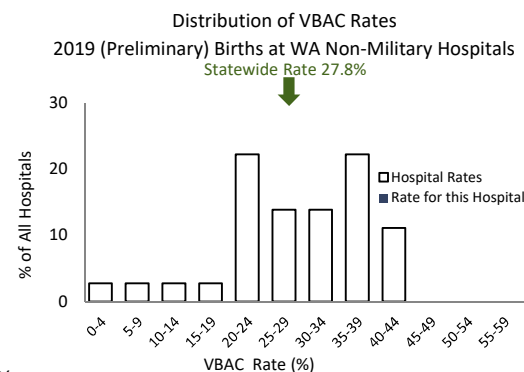
	2017	2018	2019	Net Change '18 to '19	3-year
NTSV Deliveries	363	406	379	-27	1,148
<b>NTSV C-Section Rates</b>					
Rate for this Hospital	19.6%	20.0%	20.6%	0.6%	20.0%
Level 2 Hospitals	22.8%	23.5%	23.4%	-0.2%	23.2%
Hospitals Statewide	24.3%	24.4%	23.8%	-0.6%	24.2%



This hospital's 2019 NTSV C-Section rate of 20.6% was lower than the statewide rate of 23.8% .

## Vaginal Births After Cesarean (VBAC) for Term Singleton Vertex Deliveries

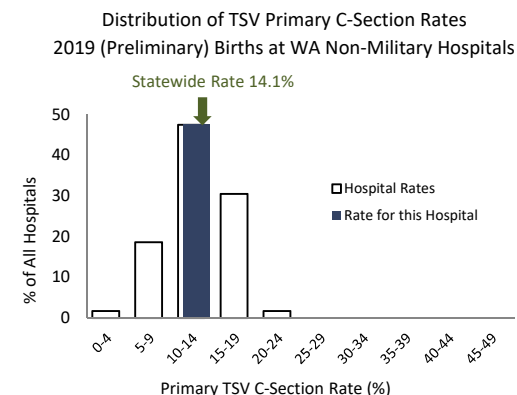
	2017	2018	2019	Net Change '18 to '19	3-year
Deliveries Post-C-Sec	82	102	92	-10	276
<b>VBAC Rates</b>					
Rate for this Hospital	52.4%	44.1%	64.1%	20.0%	53.3%
Level 2 Hospitals	30.5%	30.8%	30.1%	-0.7%	30.5%
Hospitals Statewide	27.3%	28.2%	27.8%	-0.4%	27.8%



This hospital's 2019 VBAC rate of 64.1% was higher than the statewide rate of 27.8% .

## Primary C-Sections Among Term Singleton Vertex (TSV) Deliveries

	2017	2018	2019	Net Change '18 to '19	3-year
TSV Deliveries/No Prior C	774	798	773	-25	2,345
<b>Primary C-Section Rates</b>					
Rate for this Hospital	11.5%	12.5%	11.9%	-0.6%	12.0%
Level 2 Hospitals	13.1%	13.2%	13.5%	0.3%	13.3%
Hospitals Statewide	14.1%	14.1%	14.1%	-0.1%	14.1%

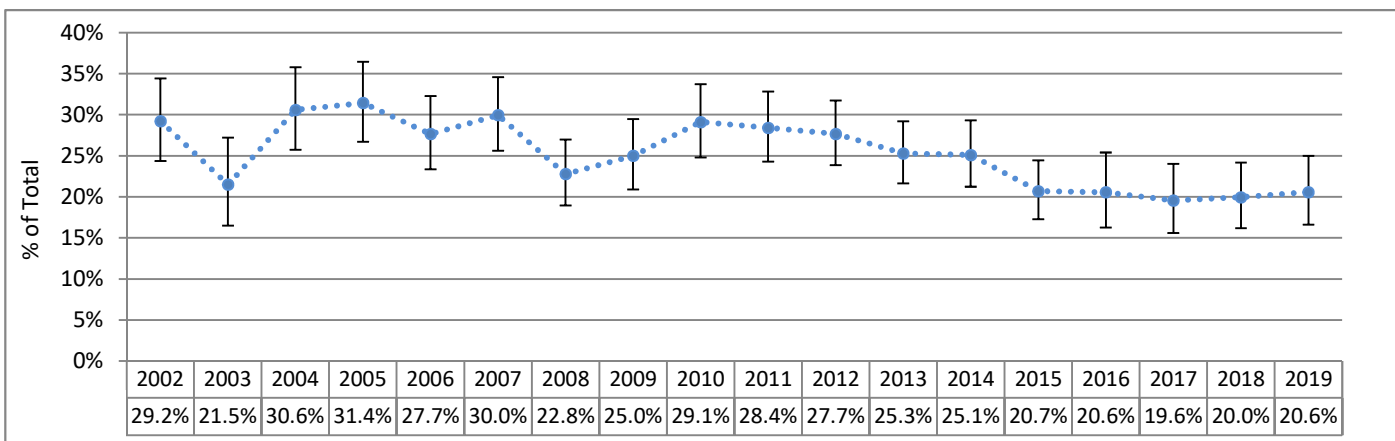


This hospital's 2019 Primary C-Section rate of 11.9% was lower than the statewide rate of 14.1% .

# Northwest Hospital And Medical Center

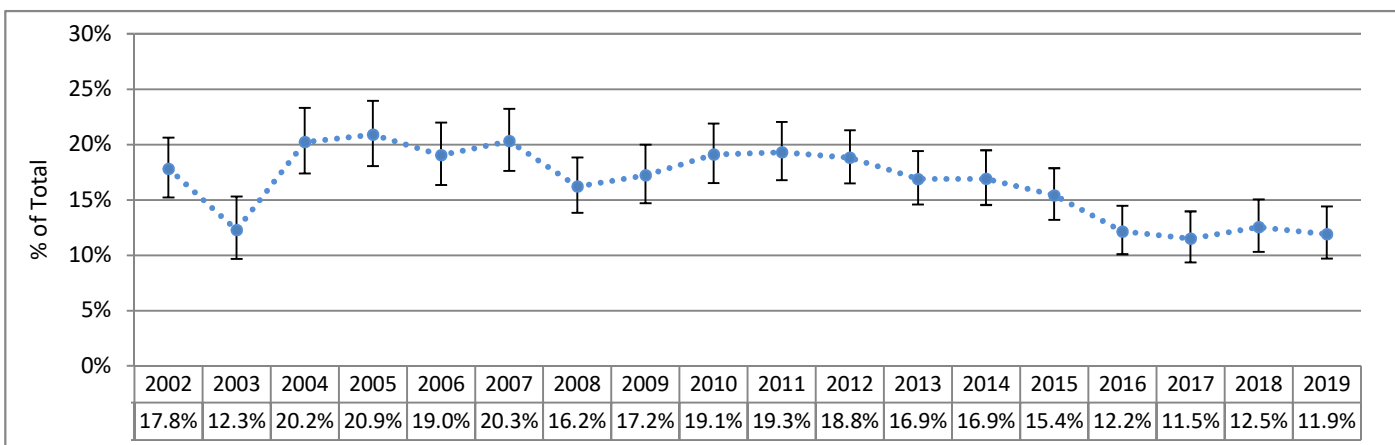
## C-Sections Among Nulliparous Term Singleton Vertex (NTSV) Deliveries 2002 - 2019 (Preliminary)

Hospital Rate with 95% Confidence Limits



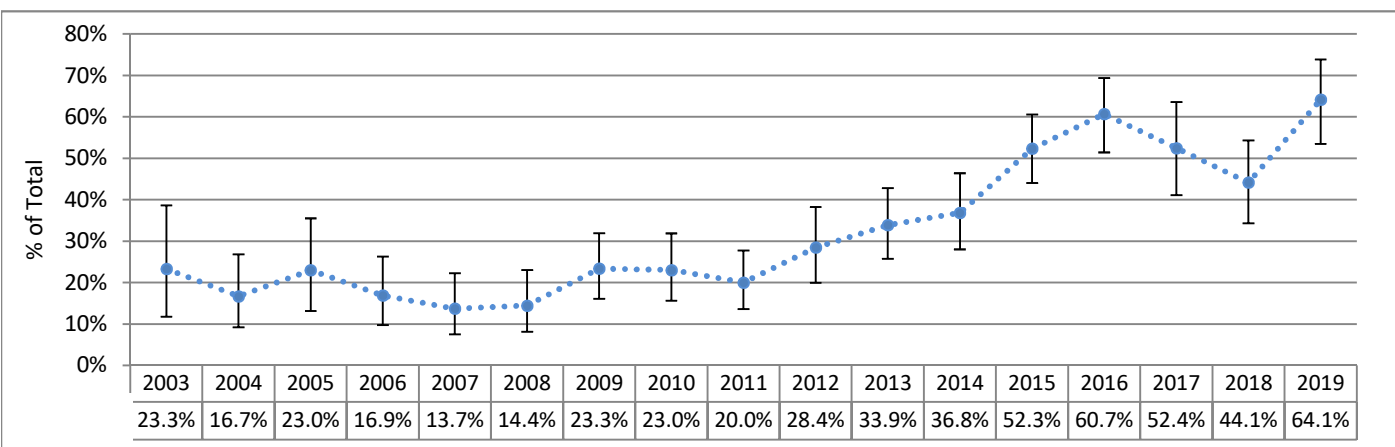
## Primary C-Sections Among Term Singleton Vertex (TSV) Deliveries 2002 - 2019 (Preliminary)

Hospital Rate with 95% Confidence Limits



## Vaginal Birth After Cesarean Among Term Singleton Vertex (TSV) Deliveries 2003 - 2019 (Preliminary)

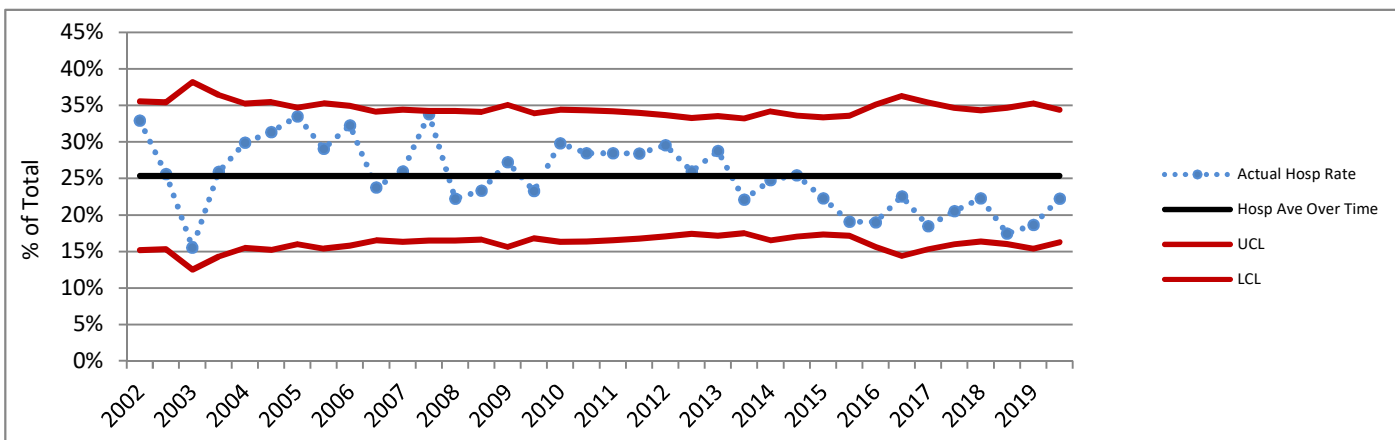
Hospital Rate with 95% Confidence Limits



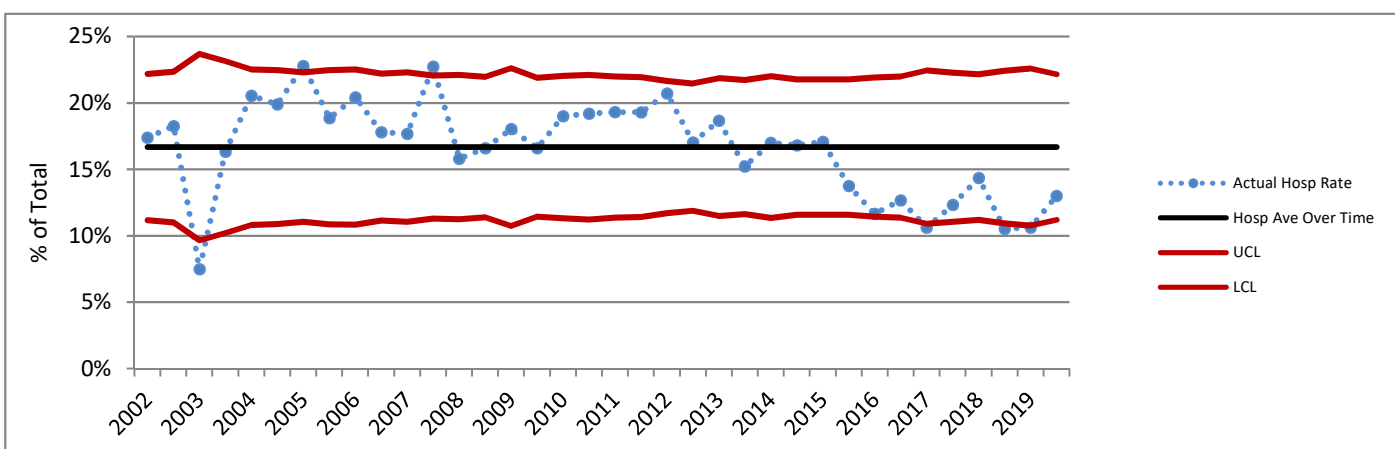
95% Confidence Limits show the range within which a data point could reasonably be the result of random variation. Points outside of this range are considered to differ significantly from the point for which the confidence limit is calculated, since there is only a 5% chance that the difference is due to random variability.

## Northwest Hospital And Medical Center

**C-Sections Among Nulliparous Term Singleton Vertex (NTSV) Deliveries 2002 - 2019 (Preliminary) (Six-Month Intervals)**  
Actual Hospital Rate Compared to Hospital Average Across Time



**Primary C-Sections Among Term Singleton Vertex (TSV) Deliveries 2002 - 2019 (Preliminary) (Six-Month Intervals)**  
Actual Hospital Rate Compared to Hospital Average Across Time



Charts based on the Hospital average over time are not presented where the Hospital number of deliveries for any six-month period did not meet the standard recommended size for upper (UCL) and lower (LCL) control lines based on 3 standard deviations. Rates above or below the red lines show a greater difference from the average than do those between the red lines.

**DATA SOURCES AND DEFINITIONS:** Certificates for live births and fetal deaths were provided by the DOH Center for Health Statistics and included in the First Steps Database. Medicaid status was determined by individual-level linkage to Medicaid claims and eligibility performed by the First Steps Database. Years refer to calendar years. **2019 birth data are preliminary.**

**Excludes** births in military facilities or facilities that do not typically perform deliveries. C-Section measures exclude cases where mother was transferred to higher level care for maternal medical or fetal indicators for delivery, or hospital births where intended place of birth was other than hospital. \*\* = Rate not shown due to small numbers.

**Perinatal Level of Care designation** is as of 2019 for all years shown. **Total Deliveries** includes live births and fetal deaths after 20 weeks' gestation. **Medicaid** refers to births to women who received Medicaid-paid maternity care. **Distribution charts** are based on non-military hospitals with at least 20 denominator deliveries. **C-Sections (NTSV)** is the percent of Cesarean sections among nulliparous, term, singleton, liveborn, vertex deliveries. **Term** is defined as gestational age of at least 37 completed weeks. For reports as of November 2015, the gestational age used for term designation is based on calculated best estimate of gestational age for years before 2003, and on obstetric estimate of gestation for years 2003 and later. **Vaginal Births After Cesarean (VBAC)** is the percent of vaginal births among live births to appropriate candidates. Women whose pregnancies were at term, had a single fetus with vertex presentation, and who had one prior C-section were considered **appropriate candidates for VBAC**. Number of prior C-sections is determined by Birth Certificate number reported and by longitudinal linkage. **Chart comparison VBAC Rates** are limited to hospitals that offer planned vaginal birth delivery after a prior Cesarean section (VBAC). **Primary C-Sections** is the percent of Cesarean sections among term, singleton, liveborn, vertex deliveries to women with no prior C-sections