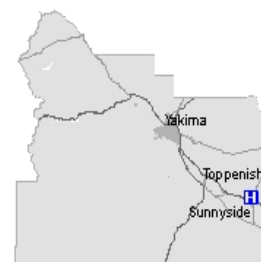


Delivery Statistics Report (2020 Preliminary Births)

Sunnyside Community Hospital

Sunnyside, WA Yakima County
 Perinatal Level of Care: Level 1 CAH



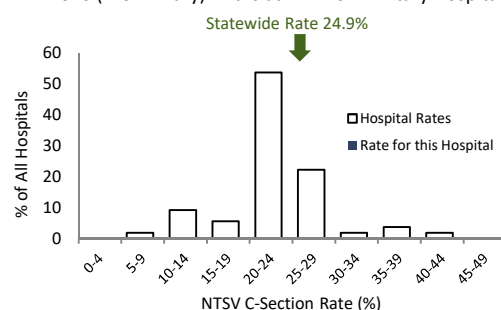
Deliveries and Medicaid Status

| | 2018 | 2019 | 2020 | 3-year TOTAL | Net Change '19 to '20 |
|--|------|------|------|--------------|-----------------------|
| Total Deliveries | 473 | 437 | 353 | 1,263 | -84 |
| Deliveries with Medicaid-paid Maternity Care | 437 | 408 | 333 | 1,178 | -75 |
| Percent Medicaid Deliveries | 92% | 93% | 94% | 93% | 1% |
| Percent Medicaid for Deliveries in this County | 79% | 80% | 77% | 79% | -3% |

C-Sections Among Nulliparous Term Singleton Vertex (NTSV) Deliveries

| | 2018 | 2019 | 2020 | Net Change '19 to '20 | 3-year |
|-----------------------------|-------|-------|-------|-----------------------|--------|
| NTSV Deliveries | 117 | 61 | 55 | -6 | 233 |
| NTSV C-Section Rates | | | | | |
| Rate for this Hospital | 14.5% | ** | ** | ** | 10.3% |
| Level 1 CAH Hospitals | 20.8% | 19.4% | 18.6% | -0.8% | 19.6% |
| Hospitals Statewide | 24.4% | 23.8% | 24.9% | 1.2% | 24.4% |

Distribution of NTSV C-Section Rates
 2020 (Preliminary) Births at WA Non-Military Hospitals

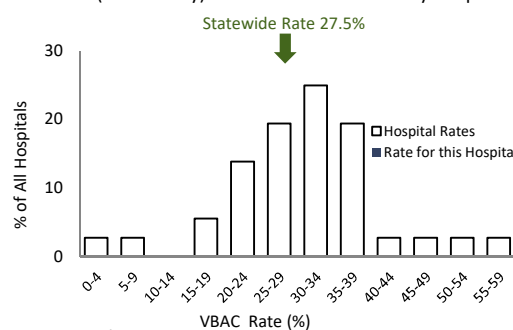


This hospital's NTSV C-Section rate not shown due to small numbers.

Vaginal Births After Cesarean (VBAC) for Term Singleton Vertex Deliveries

| | 2018 | 2019 | 2020 | Net Change '19 to '20 | 3-year |
|------------------------|-------|-------|-------|-----------------------|--------|
| Deliveries Post-C-Sec | 20 | <11 | <11 | ** | 37 |
| VBAC Rates | | | | | |
| Rate for this Hospital | ** | ** | ** | ** | ** |
| Level 1 CAH Hospitals | 19.2% | 23.1% | 25.3% | 2.1% | 22.5% |
| Hospitals Statewide | 28.2% | 27.8% | 27.5% | -0.3% | 27.8% |

Distribution of VBAC Rates
 2020 (Preliminary) Births at WA Non-Military Hospitals

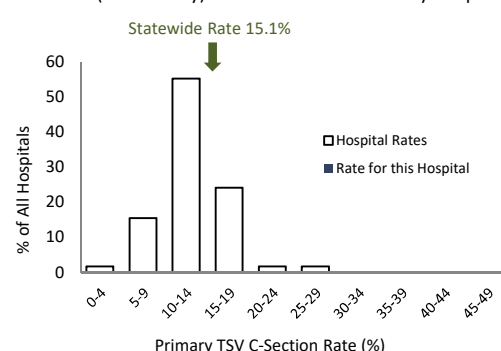


This hospital does not provide planned vaginal birth delivery services after a prior cesarean section.

Primary C-Sections Among Term Singleton Vertex (TSV) Deliveries

| | 2018 | 2019 | 2020 | Net Change '19 to '20 | 3-year |
|--------------------------------|-------|-------|-------|-----------------------|--------|
| TSV Deliveries/No Prior C | 370 | 167 | 164 | -3 | 701 |
| Primary C-Section Rates | | | | | |
| Rate for this Hospital | 12.2% | ** | ** | ** | 8.6% |
| Level 1 CAH Hospitals | 12.6% | 10.6% | 10.6% | -0.1% | 11.3% |
| Hospitals Statewide | 14.2% | 14.1% | 15.1% | 1.0% | 14.4% |

Distribution of TSV Primary C-Section Rates
 2020 (Preliminary) Births at WA Non-Military Hospitals



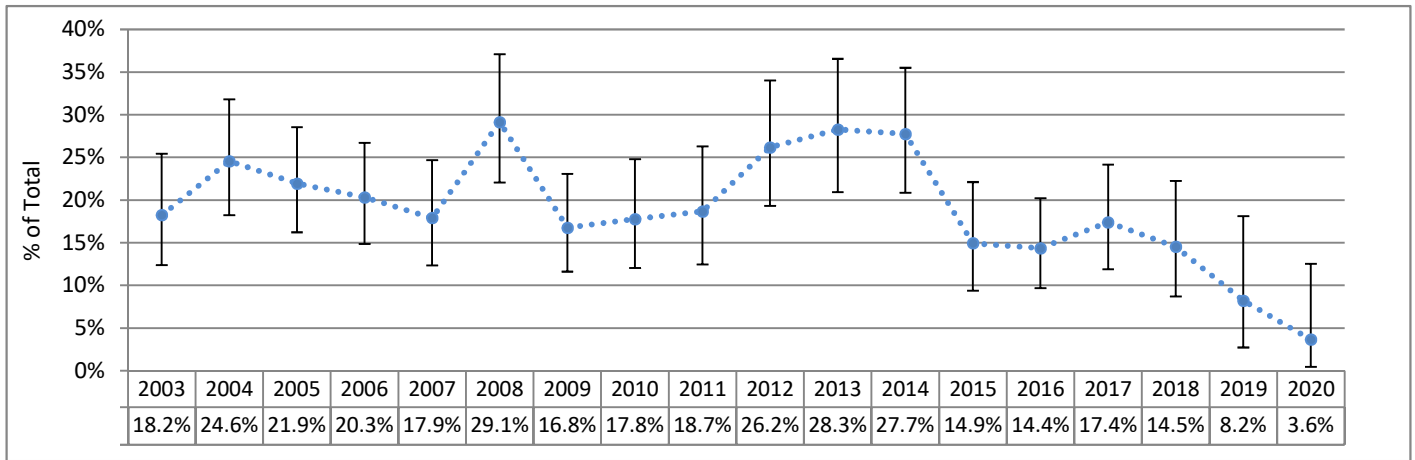
This hospital's Primary C-Section rate not shown due to small numbers.

Sunnyside Community Hospital

Chart(s) Not Displayed Due to Small Numbers

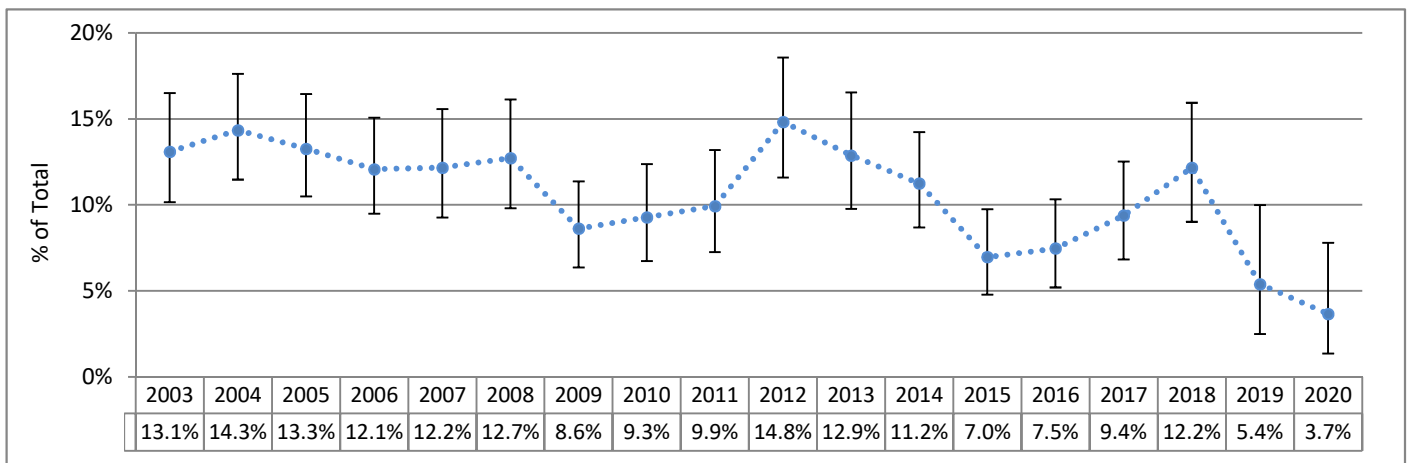
C-Sections Among Nulliparous Term Singleton Vertex (NTSV) Deliveries 2003 - 2020 (Preliminary)

Hospital Rate with 95% Confidence Limits



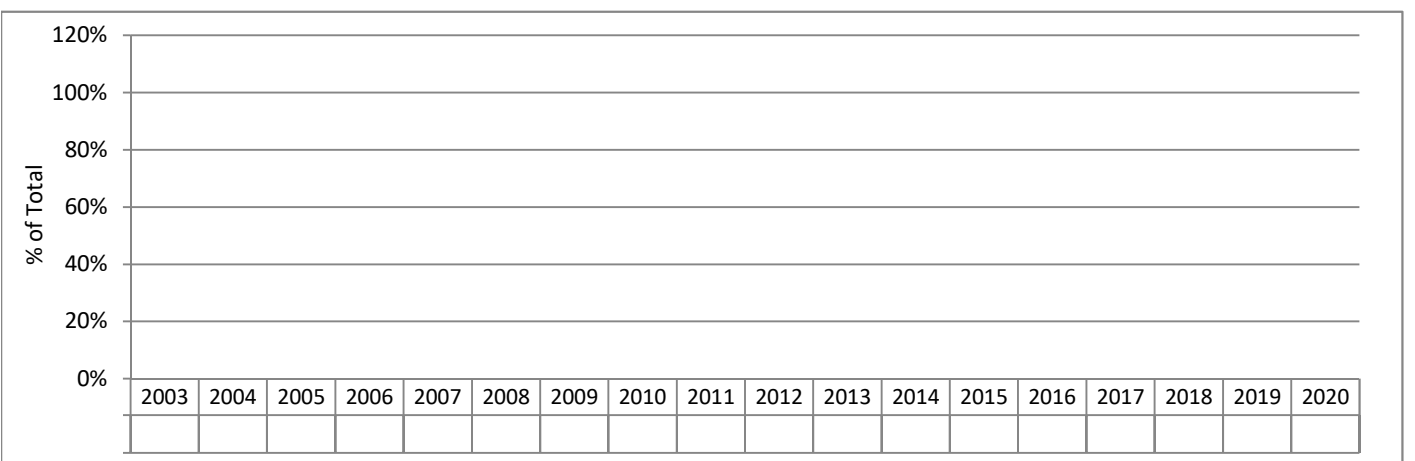
Primary C-Sections Among Term Singleton Vertex (TSV) Deliveries 2003 - 2020 (Preliminary)

Hospital Rate with 95% Confidence Limits



Vaginal Birth After Cesarean Among Term Singleton Vertex (TSV) Deliveries 2003 - 2020 (Preliminary)

Hospital Rate with 95% Confidence Limits



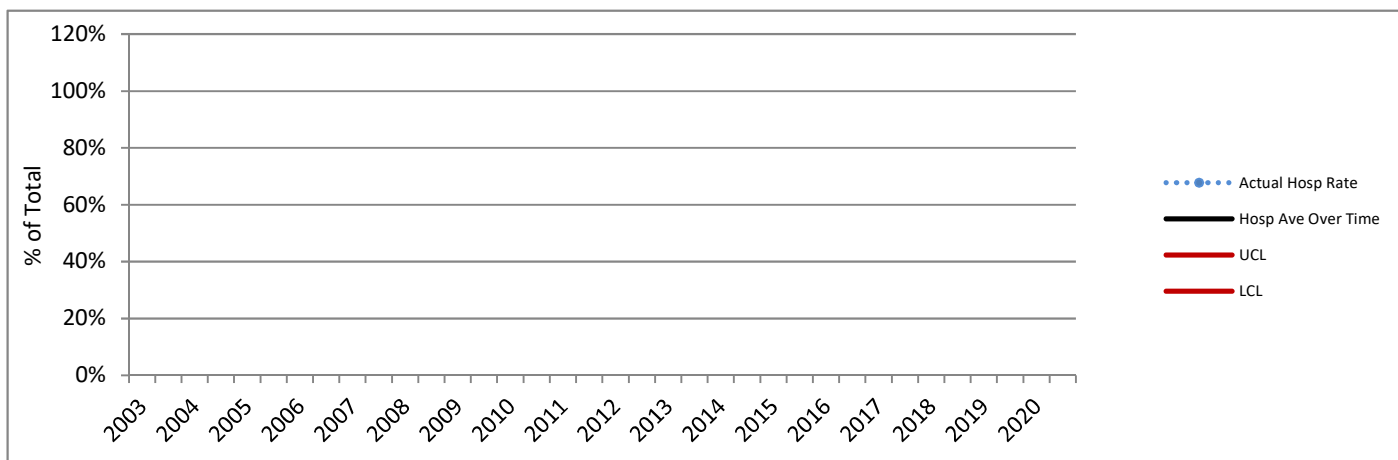
95% Confidence Limits show the range within which a data point could reasonably be the result of random variation. Points outside of this range are considered to differ significantly from the point for which the confidence limit is calculated, since there is only a 5% chance that the difference is due to random variability.

Sunnyside Community Hospital

Charts Not Displayed Due to Small Numbers for at Least Some Six-Month Intervals

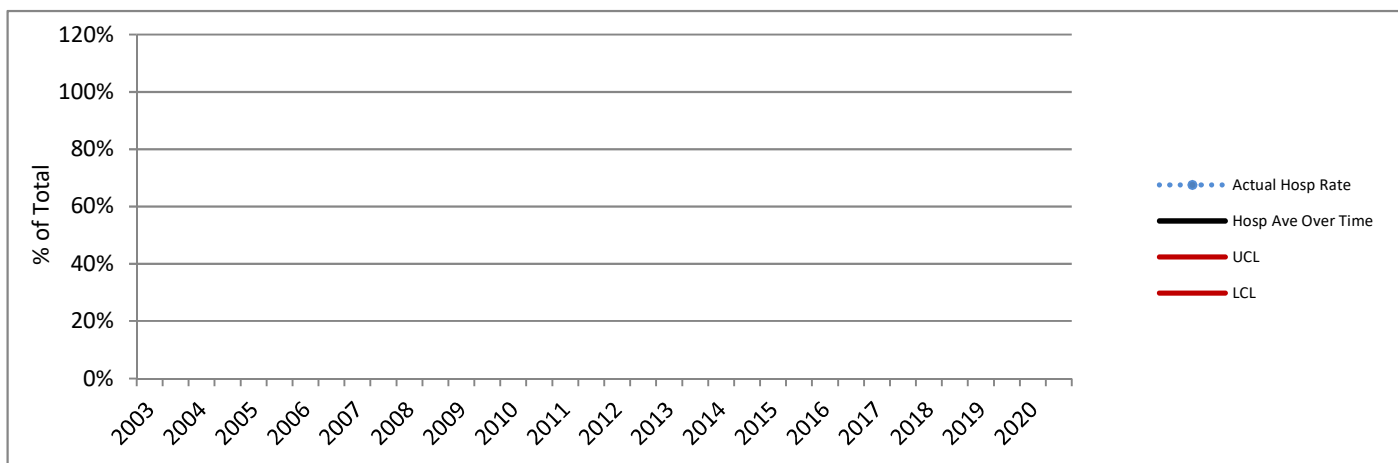
C-Sections Among Nulliparous Term Singleton Vertex (NTSV) Deliveries 2003 - 2020 (Preliminary) (Six-Month Intervals)

Actual Hospital Rate Compared to Hospital Average Across Time



Primary C-Sections Among Term Singleton Vertex (TSV) Deliveries 2003 - 2020 (Preliminary) (Six-Month Intervals)

Actual Hospital Rate Compared to Hospital Average Across Time



Charts based on the Hospital average over time are not presented where the Hospital number of deliveries for any six-month period did not meet the standard recommended size for upper (UCL) and lower (LCL) control lines based on 3 standard deviations. Rates above or below the red lines show a greater difference from the average than do those between the red lines.

DATA SOURCES AND DEFINITIONS: Certificates for live births and fetal deaths were provided by the DOH Center for Health Statistics and included in the First Steps Database. Medicaid status was determined by individual-level linkage to Medicaid claims and eligibility performed by the First Steps Database. Years refer to calendar years. **2020 birth data are preliminary.**

Excludes births in military facilities or facilities that do not typically perform deliveries. C-Section measures exclude cases where mother was transferred to higher level care for maternal medical or fetal indicators for delivery, or hospital births where intended place of birth was other than hospital. ** = Rate not shown due to small numbers.

Perinatal Level of Care designation is as of 2020 for all years shown. **Total Deliveries** includes live births and fetal deaths after 20 weeks' gestation. **Medicaid** refers to births to women who received Medicaid-paid maternity care. **Distribution charts** are based on non-military hospitals with at least 20 denominator deliveries. **C-Sections (NTSV)** is the percent of Cesarean sections among nulliparous, term, singleton, liveborn, vertex deliveries. **Term** is defined as gestational age of at least 37 completed weeks. For reports as of November 2015, the gestational age used for term designation is based on calculated best estimate of gestational age for years before 2003, and on obstetric estimate of gestation for years 2003 and later. **Vaginal Births After Cesarean (VBAC)** is the percent of vaginal births among live births to appropriate candidates. Women whose pregnancies were at term, had a single fetus with vertex presentation, and who had one prior C-section were considered **appropriate candidates for VBAC**. Number of prior C-sections is determined by Birth Certificate number reported and by longitudinal linkage. **Chart comparison VBAC Rates** are limited to hospitals that offer planned vaginal birth delivery after a prior Cesarean section (VBAC). **Primary C-Sections** is the percent of Cesarean sections among term, singleton, liveborn, vertex deliveries to women with no prior C-sections