

# Prenatal – 25 Strategic Plan

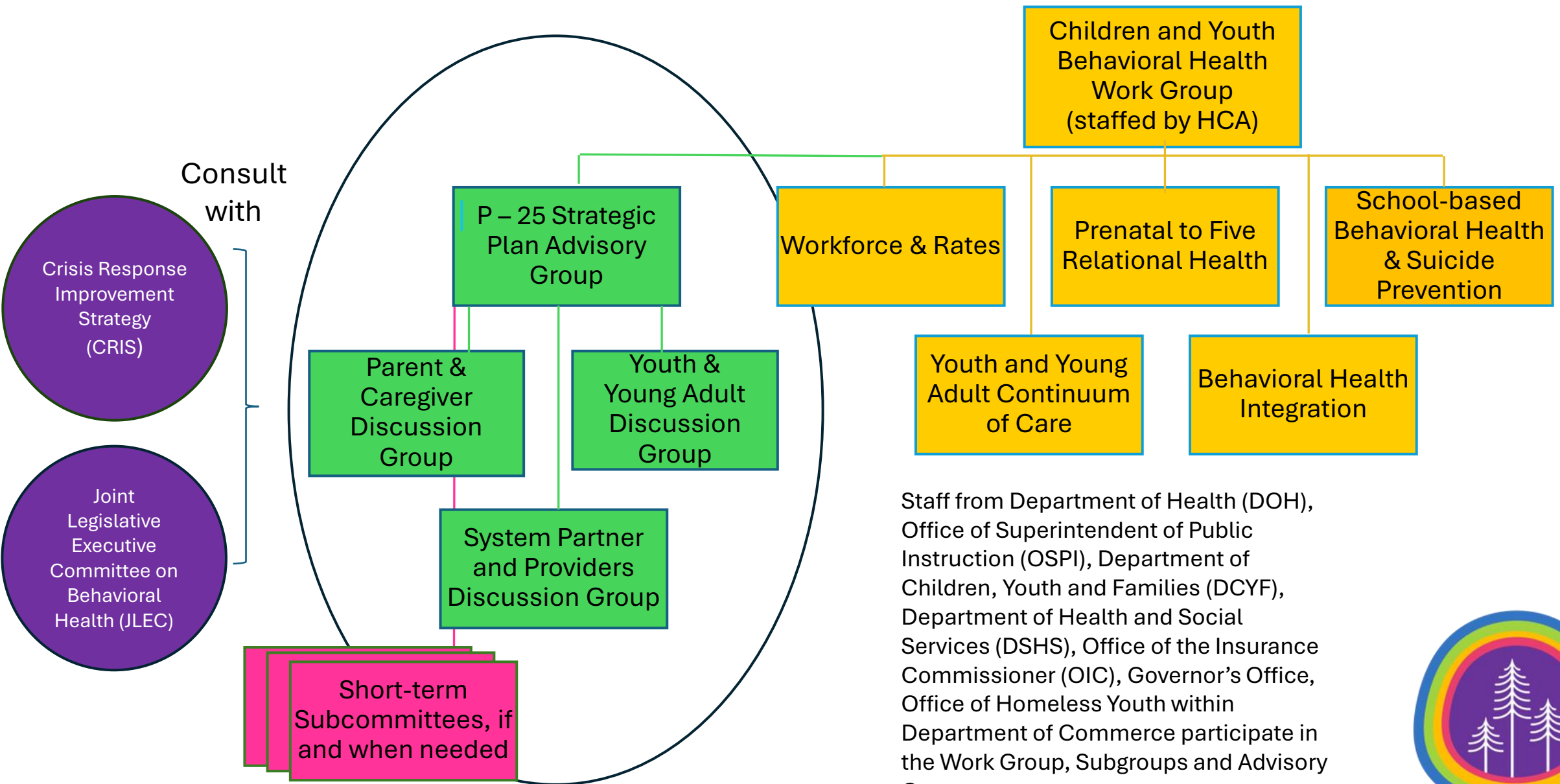
**Joint Legislative  
Executive  
Committee on  
Behavioral Health**

July 30, 2024



**Washington  
Thriving**

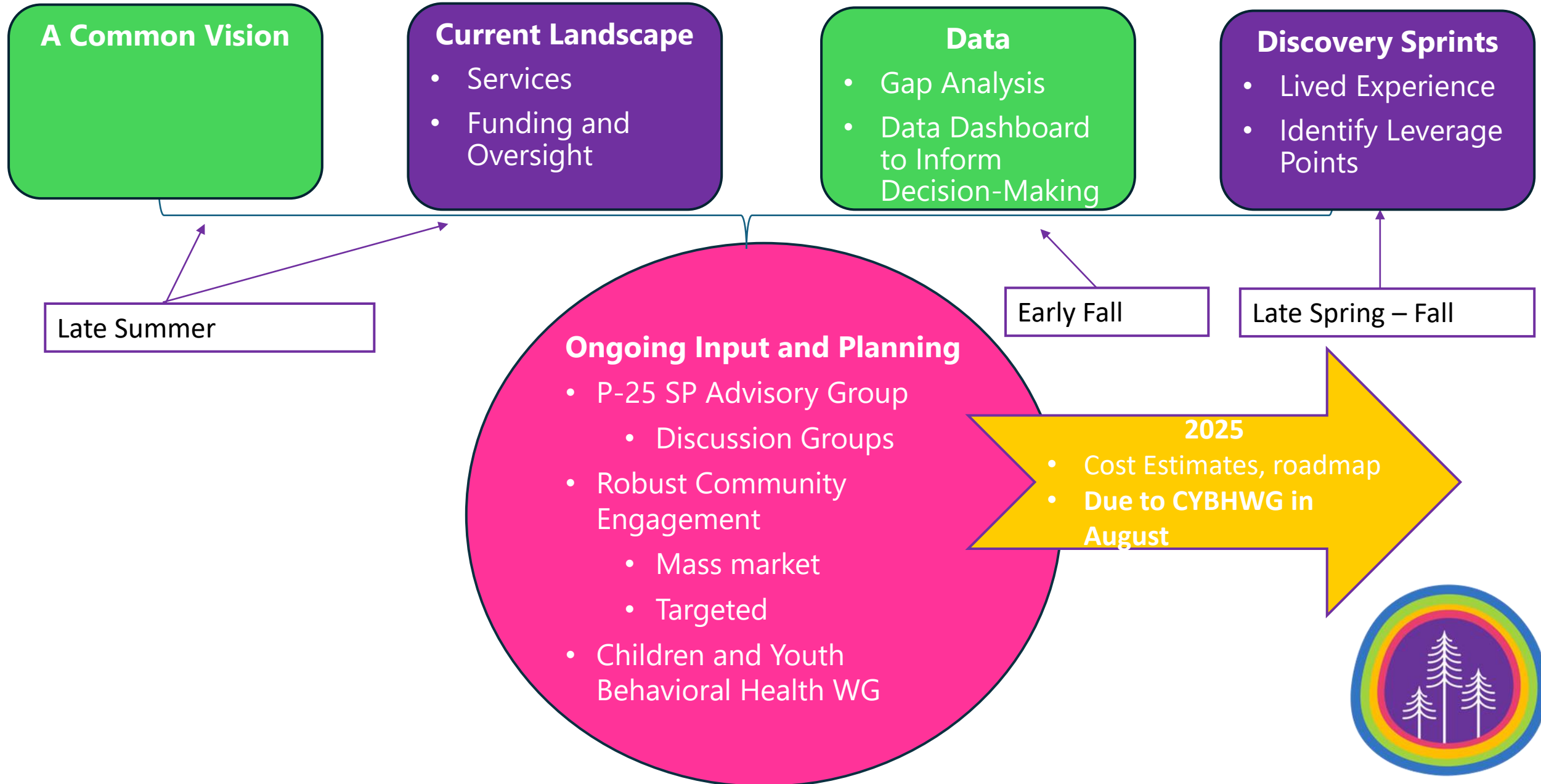
# Governance of the P – 25 Strategic Plan



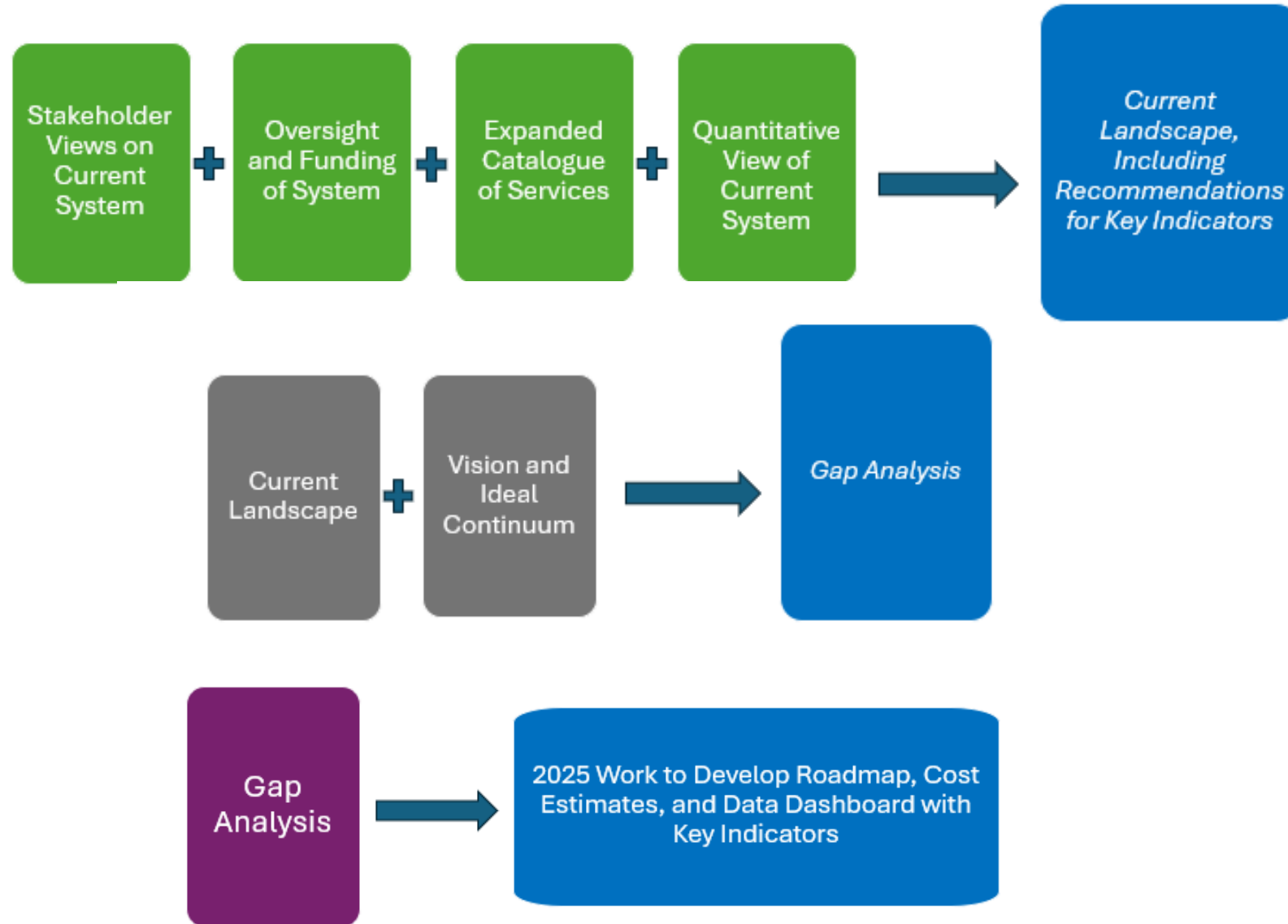
Staff from Department of Health (DOH), Office of Superintendent of Public Instruction (OSPI), Department of Children, Youth and Families (DCYF), Department of Health and Social Services (DSHS), Office of the Insurance Commissioner (OIC), Governor’s Office, Office of Homeless Youth within Department of Commerce participate in the Work Group, Subgroups and Advisory Group.



# Building the Strategic Plan



# Building a Roadmap



Note: Currently planning integration of systems mapping into this process.



# Work Stream Updates

## Community Engagement

- Expanded P-25 Strategic Plan Advisory Group launched in June
- Monthly discussion groups launched in May
  - Parents and Caregivers
  - Youth and Young Adults
  - Providers and System Partners
- In person and virtual engagement with youth/young adults, parents/caregivers, and members of the workforce in late summer/early Fall

## Discovery Sprints

- Scoping conversations on four topics
- Discovery phase (wrapping up in August)
  - Support for behavioral health during pregnancy
  - Connecting kids to services in schools
- Continuing to hone:
  - Transitional age youth
  - Discharge to community after hospitalization or crisis

## Landscape Analysis

- Two components
  1. Catalog of existing services
    - State programs
    - Local programs
      - BH-ASOs
      - County services
      - ACHs
    - Commercially insured
    - School-based/ESDs
  2. Oversight and funding of system(s)

## Quantitative Data

- Two Goals
  - Understand gaps
  - Develop dashboard
- Series of scoping conversations with partner agencies to:
  - Identify and categorize ideal service array
  - Identify corresponding data sources
- Initial Deliverable with data sources and key indicators