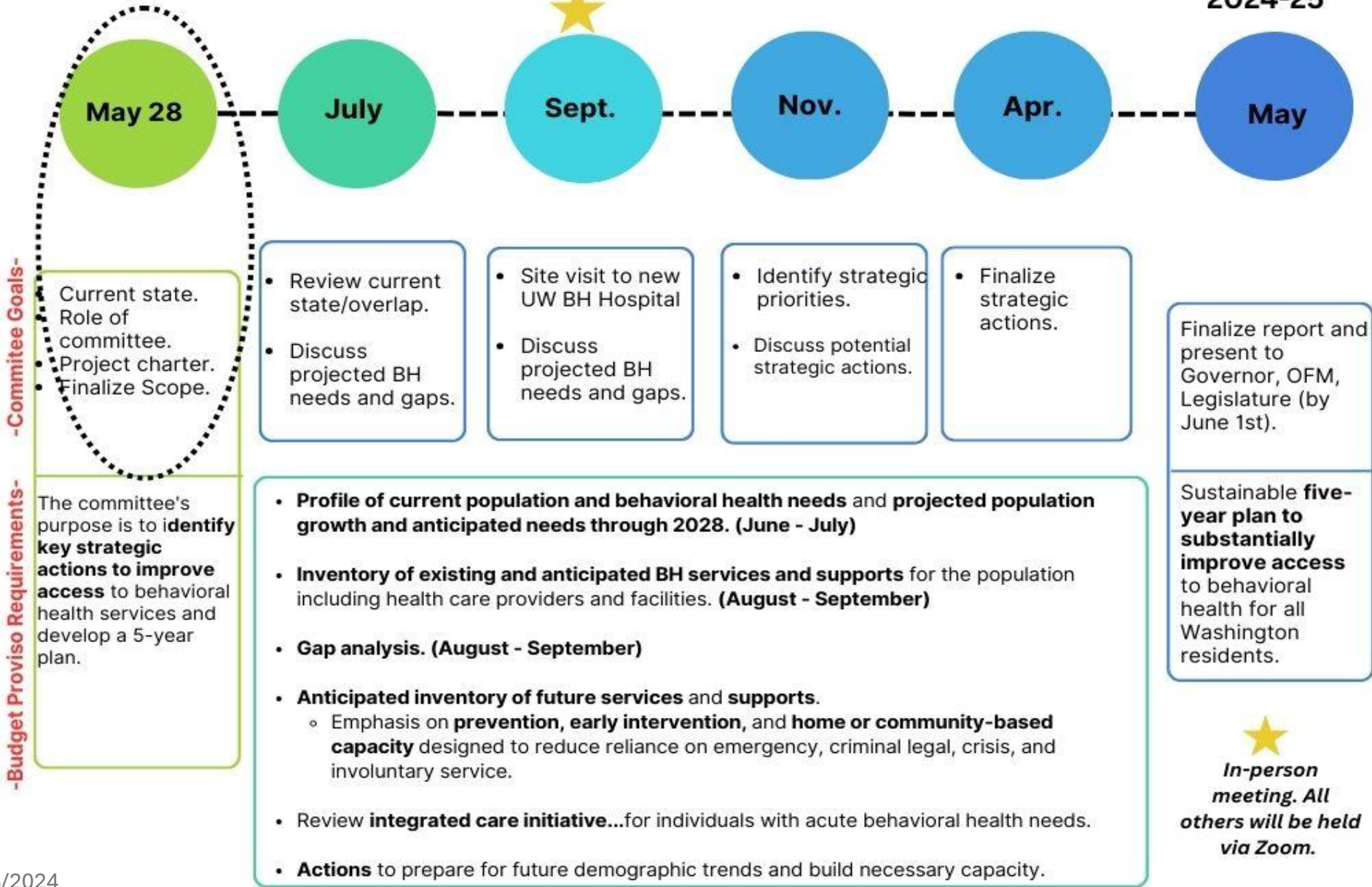


Joint Legislative & Executive Committee on Behavioral Health

May 28, 2024

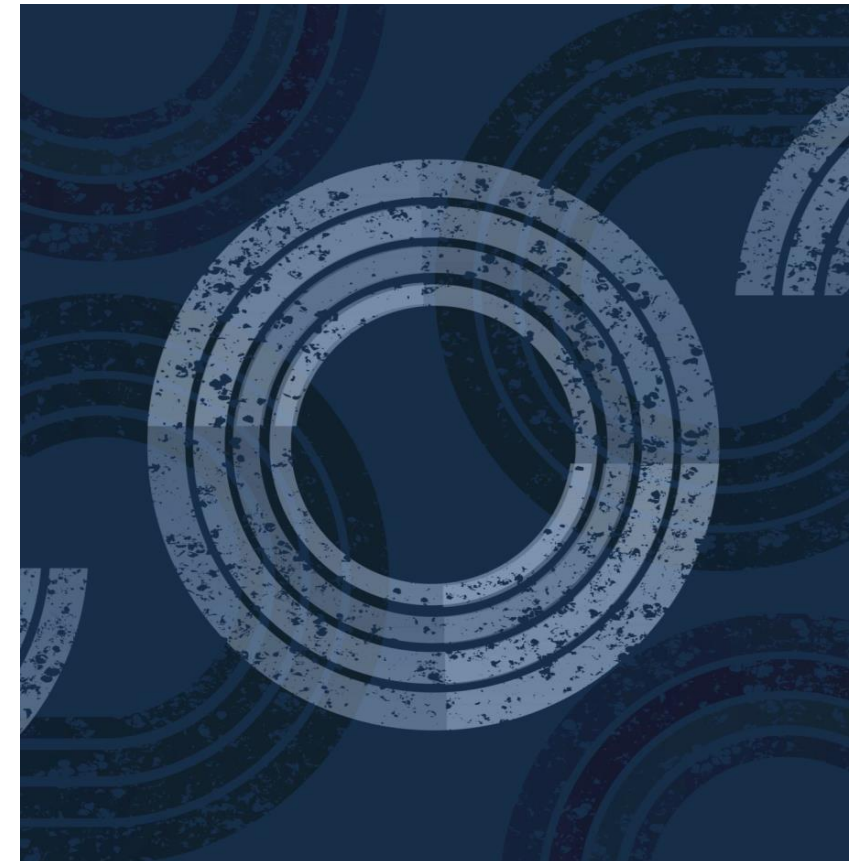
Washington State JLEC on Behavioral Health 2024-25



Scope: the Committee's Work

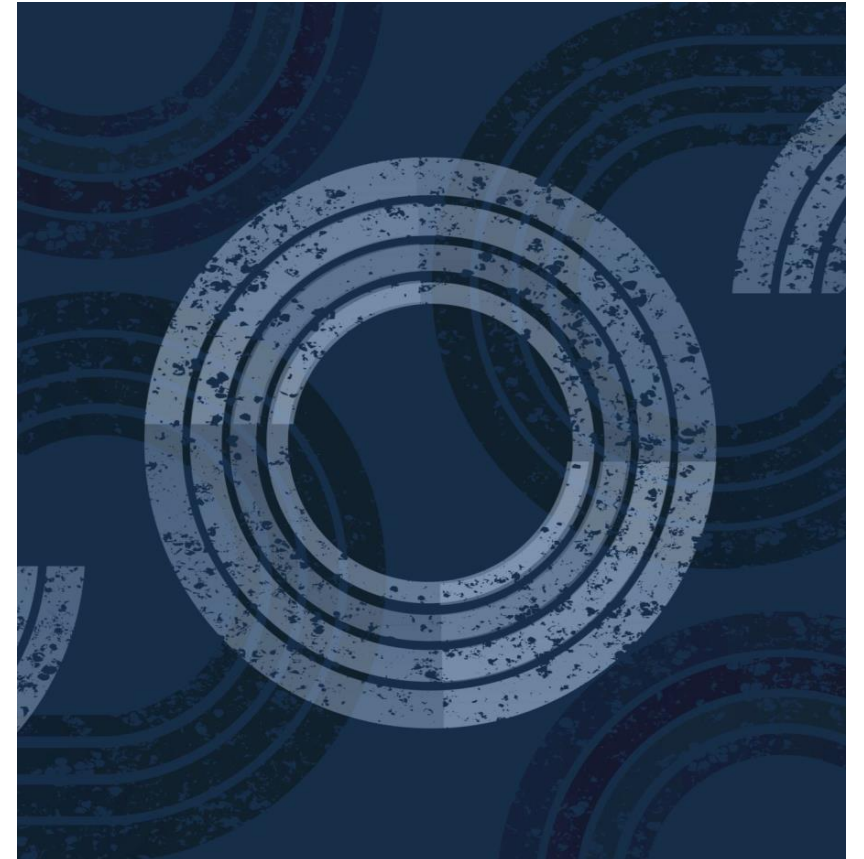
Proviso Requirements

- **Establish a profile** of Washington's current population and its behavioral health needs and a projection of population growth and anticipated need
- **Assess projected needs** for BH services based on trends and population .
- **Identify service capacity and gaps/need** for additional support.
- Identify **inventory of future services** needed.
 - Specific emphasis on prevention, early intervention, & home or community-based capacity to reduce reliance on emergency, criminal legal, crisis, and involuntary services.
- Develop a plan and strategies to substantially improve access to BH services.



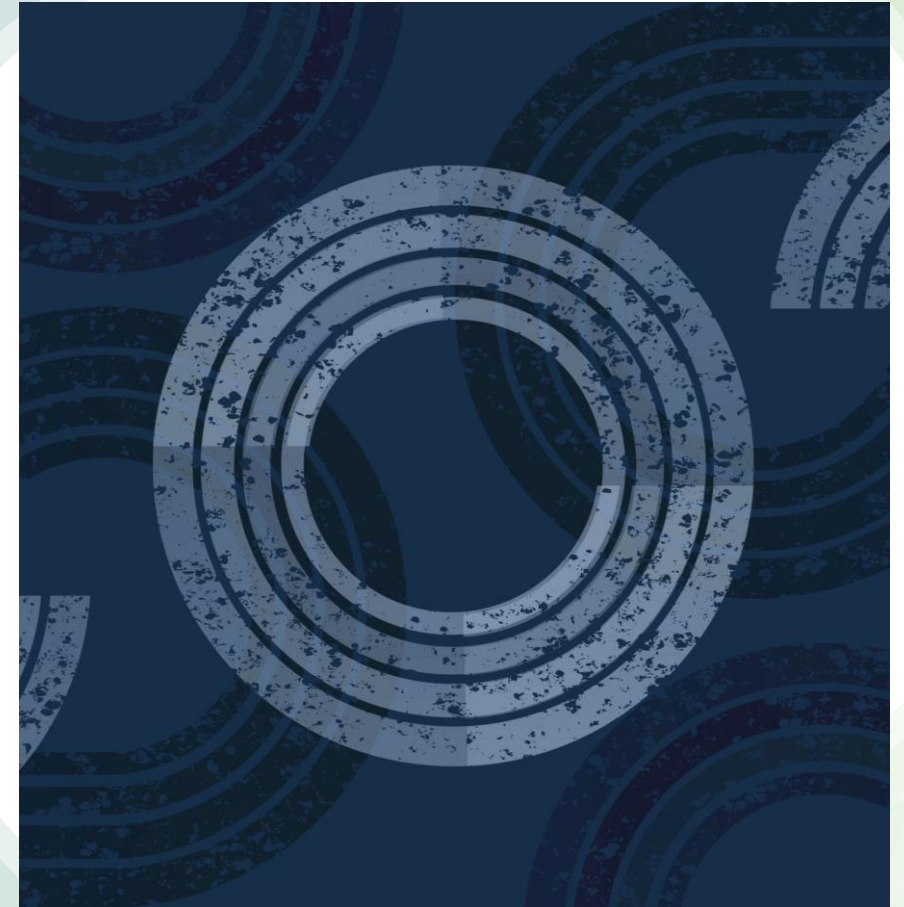
Working Definition of Behavioral Health

- Behavioral Health includes mental health and behavioral factors to prevent or treat both mental illness and substance use disorders. Behavioral health involves the interaction between biological, psychological, social, and environmental factors that shape an individual's health and well-being.
- Mental Health - encompasses a broad spectrum of conditions ranging from anxiety and depression to schizophrenia and bipolar disorder.
- Substance Use Disorders - includes alcohol and drug abuse and addiction.



Guiding Principles

- Focus on *system-wide issues*, priorities, and goals across state agencies (not focusing on specific agencies).
- Coordinate and avoid duplication with the work of other workgroups, policies and investments.
- Focus on prevention, early intervention and community-based care, to “reduce reliance on emergency, criminal legal, crisis, and involuntary services.”
- Consider how behavioral health needs vary across Washington’s communities, including impacts on different populations and demographics (income, race, geographical location, age, gender, etc.).



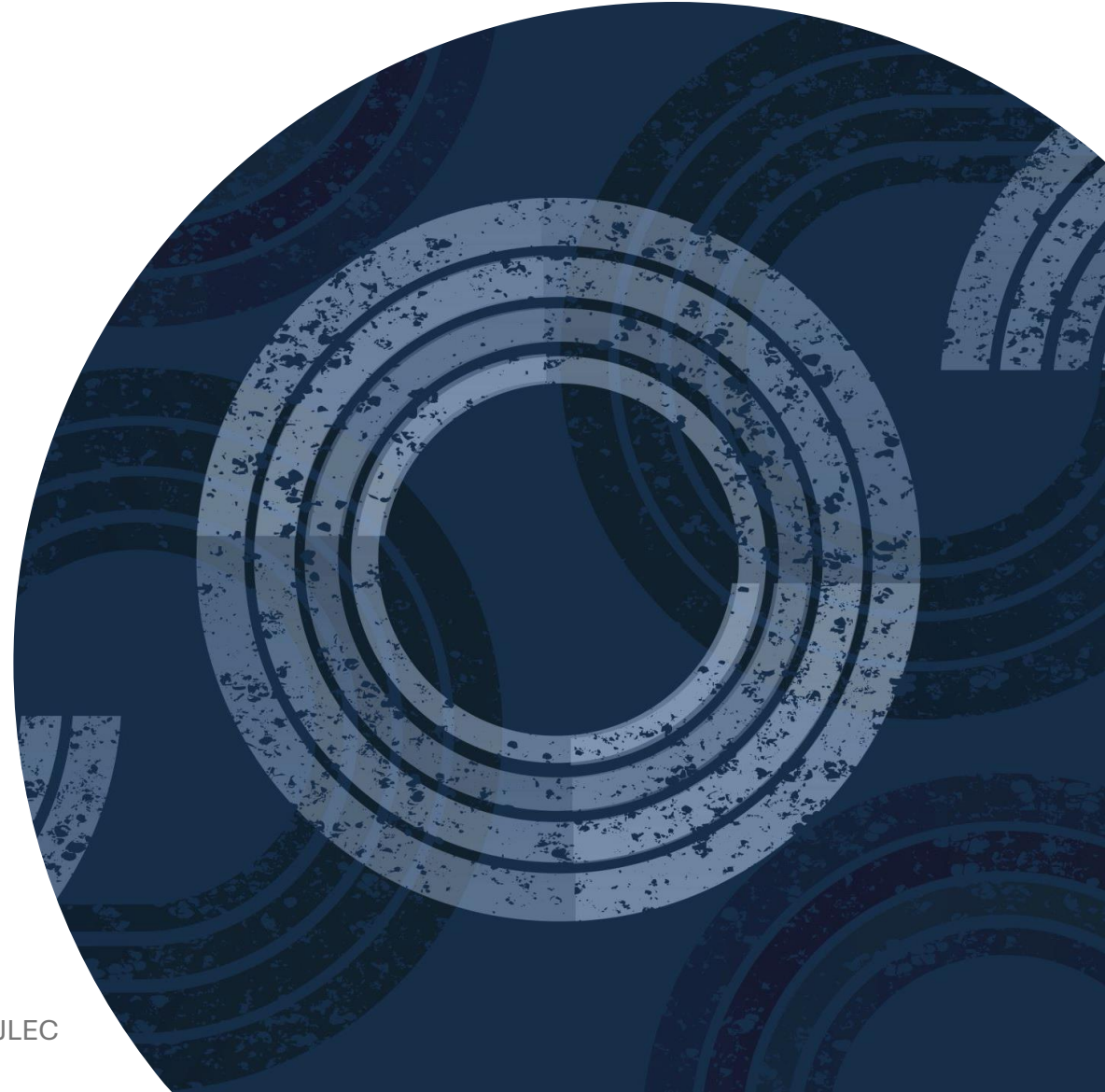
Scope Discussion

Per proviso

- All age groups
- All BH services, with emphasis on:
 - Improved access to services
 - Prevention and early intervention

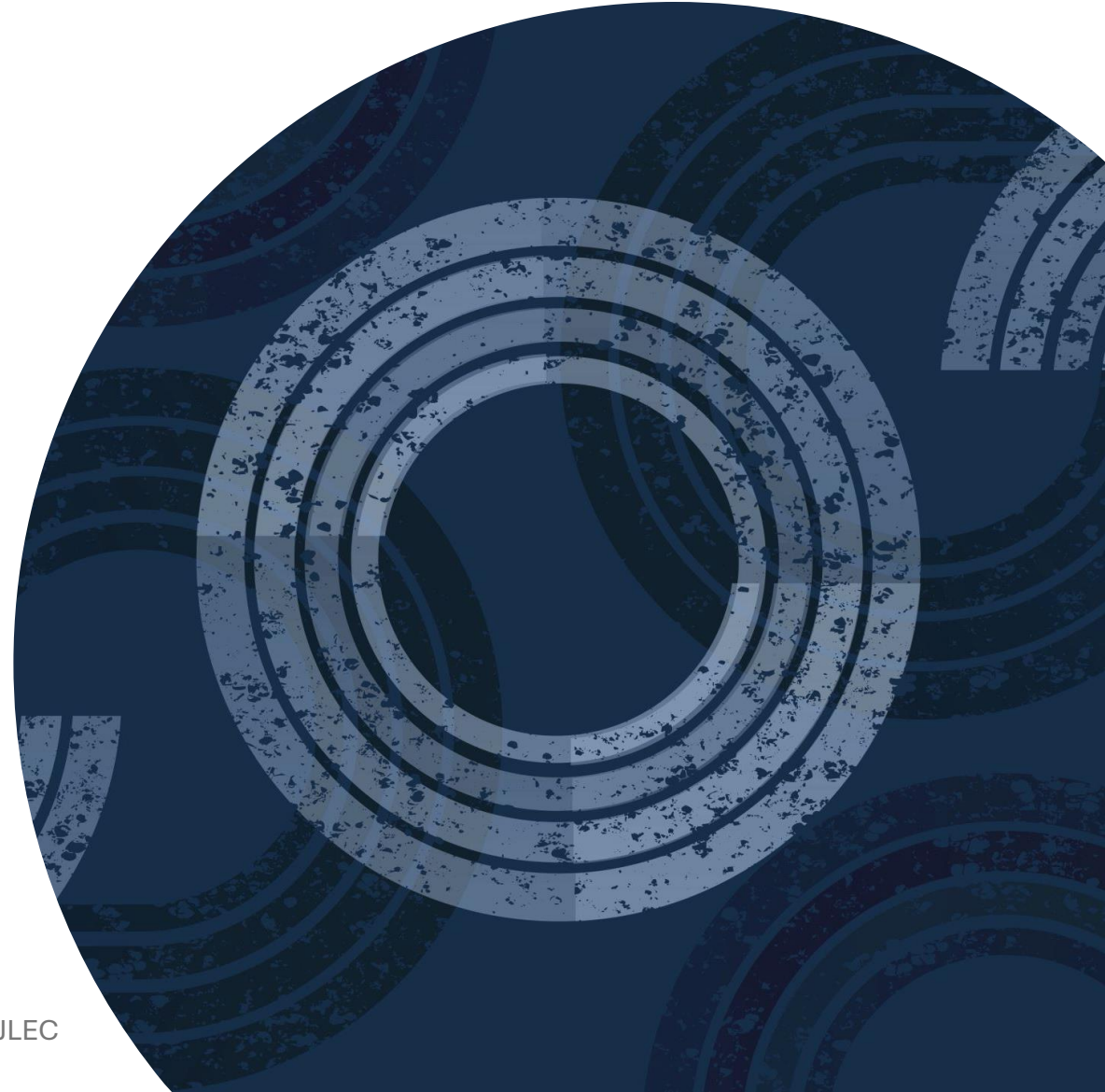
Behavioral Health Services

- Prevention
- Integration with primary care
- Early Intervention, Assessment & Referral
- Community-based care
- Crisis Care
- Discharge & Step Down
- Long-Term Care & Acute-Care Hospital
Transitions

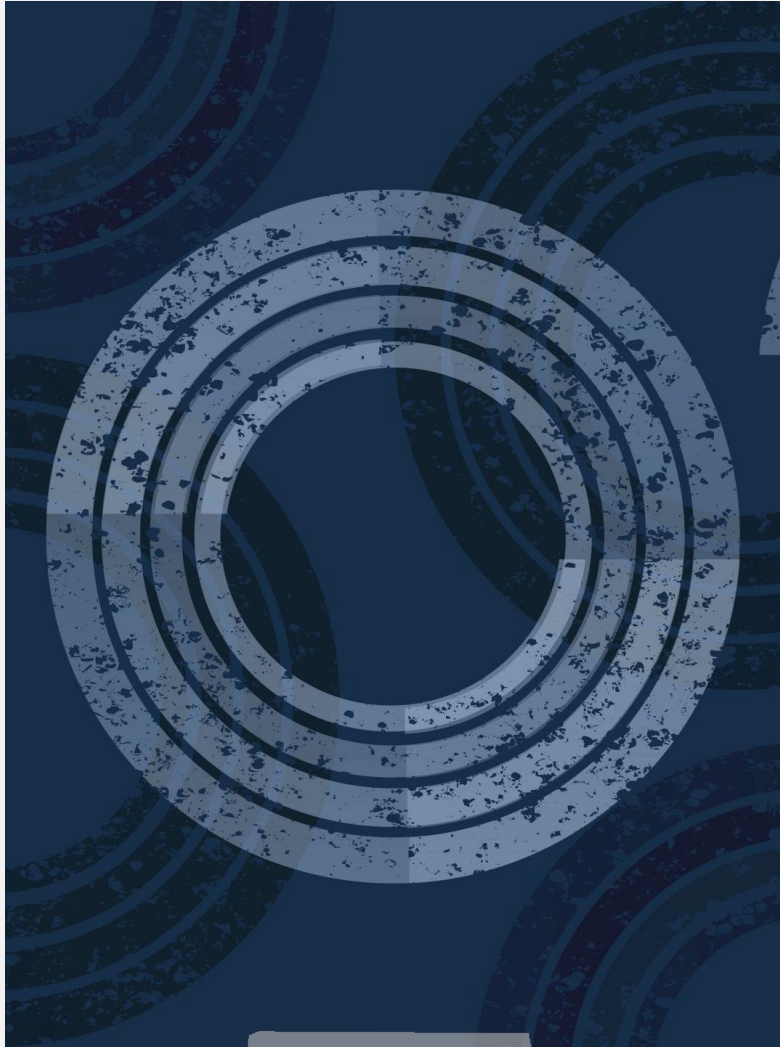


Interrelated Issues to Consider

- Intersection of BH and Substance Use Disorders
- BH Workforce Development
- Behavioral Health and Criminal Justice intersections (programs to prevent justice system involvement and incarceration, care for populations in carceral settings such as jails/prisons, etc.)
- Insurance systems and funding: Medicaid, Medicare and Private
- Developmental Disabilities intersections
- Housing and Supportive Housing
- Education & Trainings (i.e., family and community)

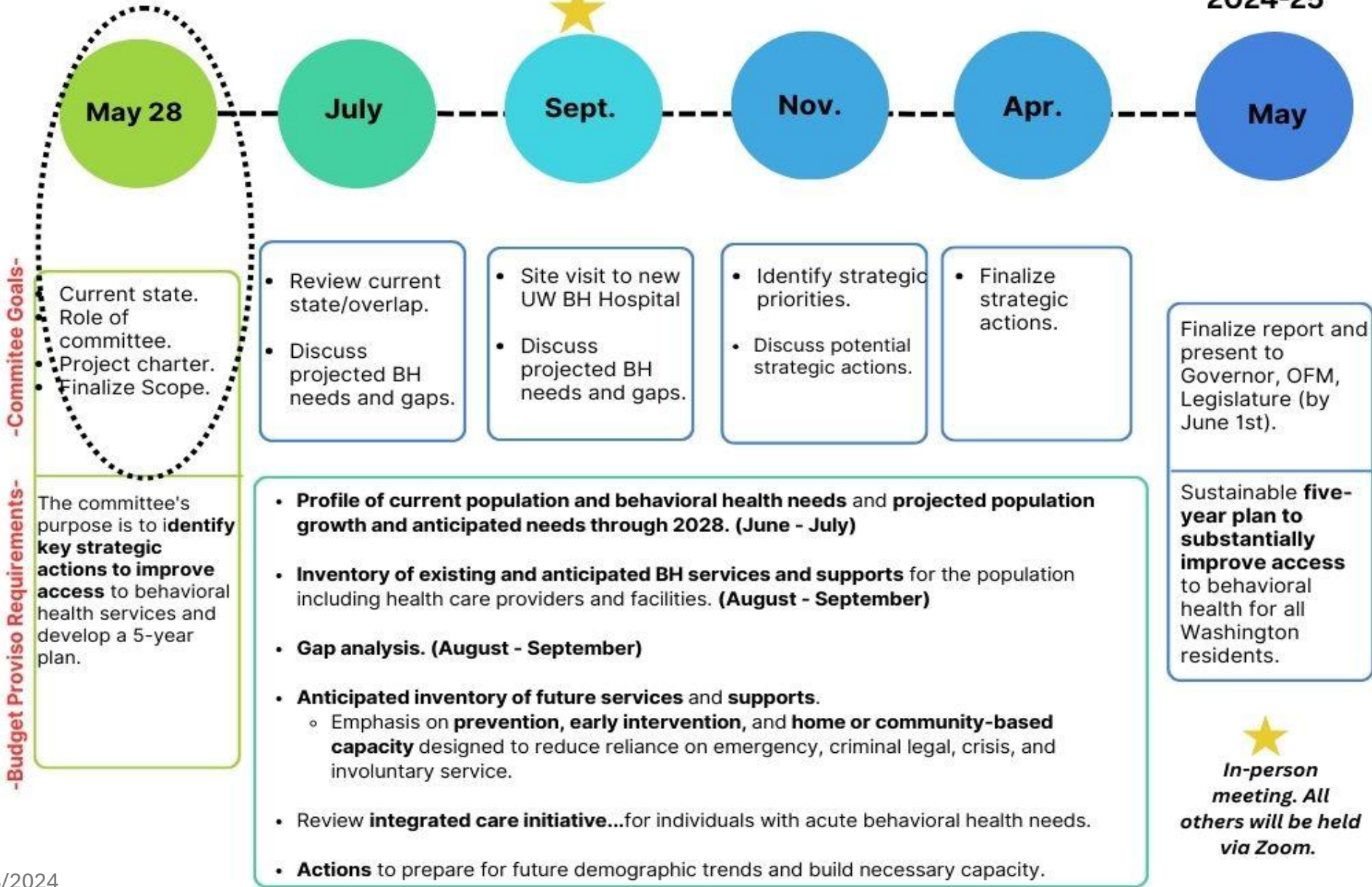


Scope Refinement Discussion



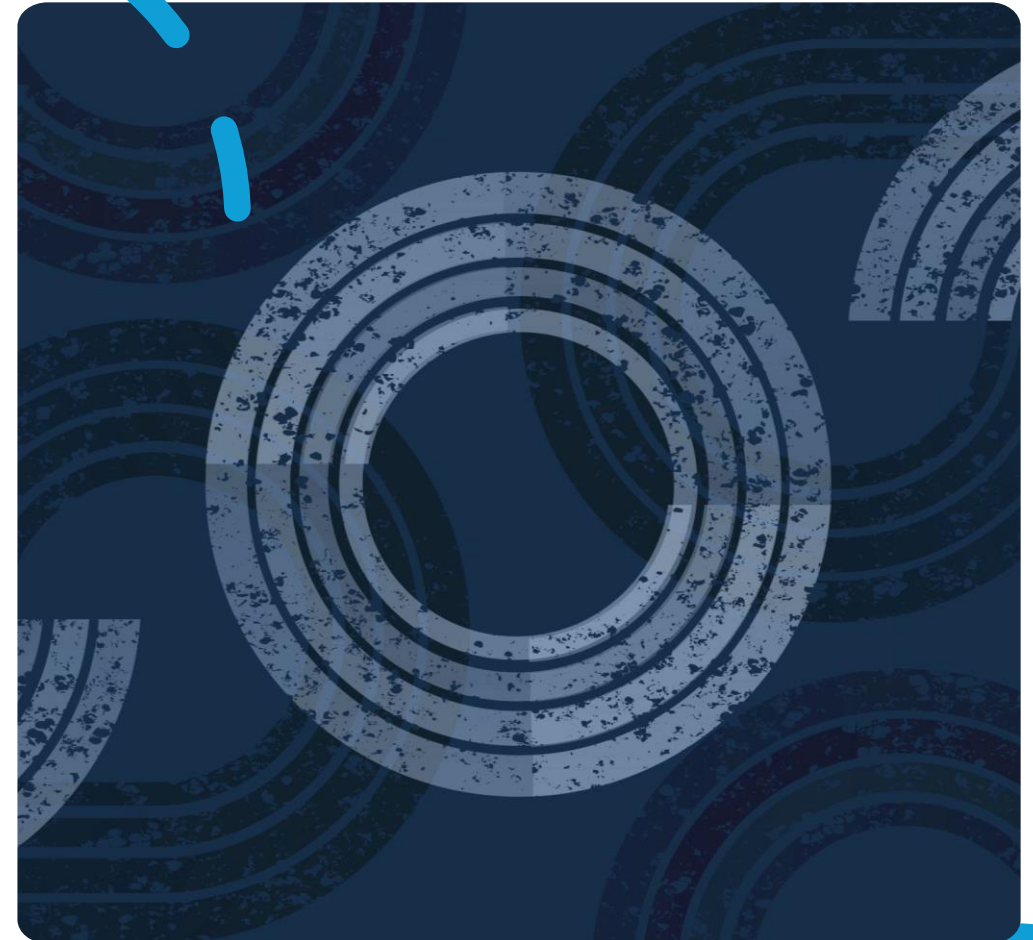
1. Given the proviso and discussions so far, what are your thoughts on the **issues** that are most important to include in the Committee's strategic plan to improve BH access and meet future needs? Examples:
 - Types of services along continuum of care
 - Location
 - Access (availability, affordability)
2. Are there specific **populations or demographics** that should be focused on?
 - Age groups, race/ethnicity, gender, geography, income
3. What are your thoughts on any other **interrelated issues** that should be included?

Washington State JLEC on Behavioral Health 2024-25



Next Steps

1. Identify the current and future BH needs of Washington's population and identify gaps/unmet needs
 - What information does the Committee need to support understanding of current and projected needs?
 - What information on needs, services, and gaps would help the Committee with its planning?
2. Meeting Schedule
 - Next meeting timing
 - Frequency of future meetings





Questions?
