

Joint Legislative & Executive Committee on Behavioral Health

July 30, 2024



Welcome & Introductions

8/5/2024

New Committee Members

- Kailey Fiedler-Gohlke
- Anna Nepomuceno
- Laura Van Tosh

Warm-Up Question

What have you enjoyed or are you looking forward to this summer?

Behavioral Health JLEC

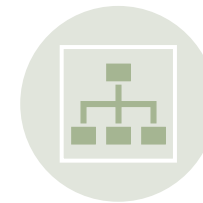
Today's Meeting Goals



1. Clarify strategic priorities for this committee.



2. Identify additional information needs.



3. Discuss formation of subcommittees to support the work.

Committee Charter - Finalize



DEFINITION



GUIDING
PRINCIPLES



COMMITTEE
SCOPE



QUESTIONS?



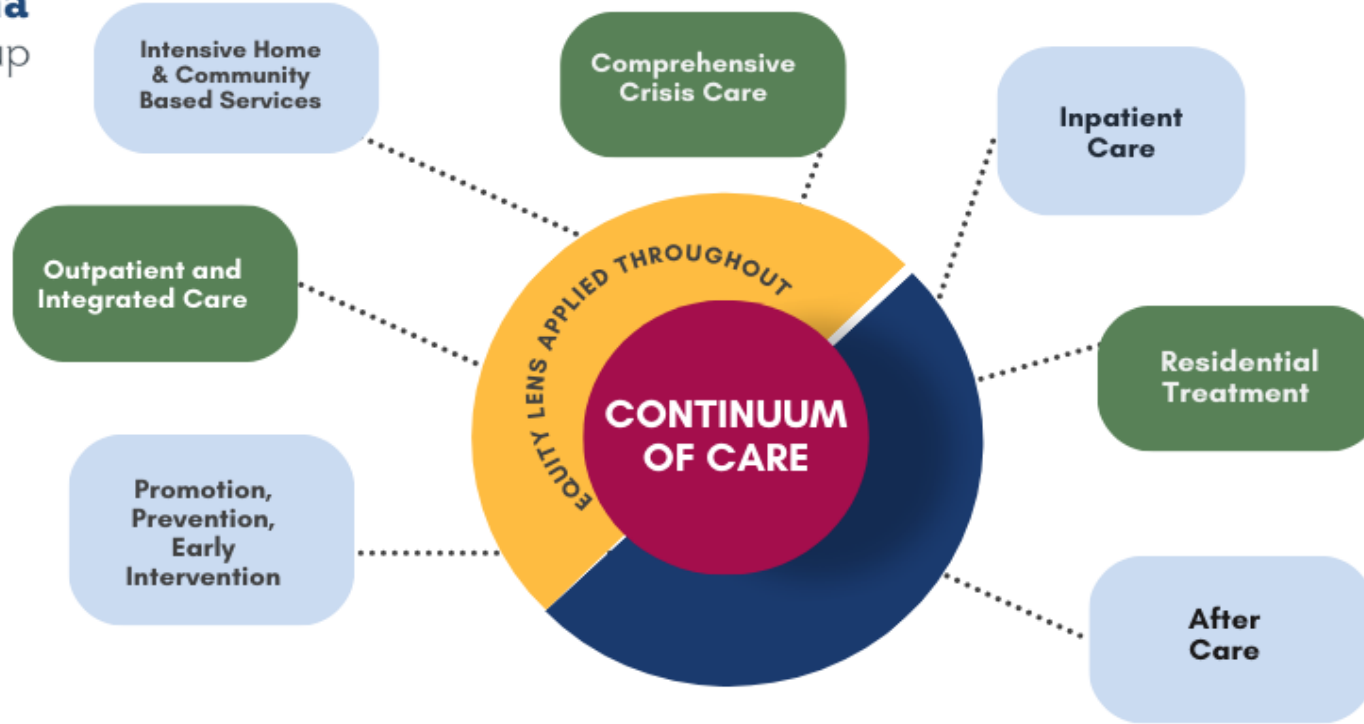
COMMENTS?

WA State Behavioral Health Workgroups and Committees	Focus Area(s)	Active?
Behavioral Health Joint Legislative and Executive Committee (this Committee, June 30, 2025)	Systemwide: Improve access to Behavioral Health services, early intervention	Y
Children and Youth Behavioral Health Work Group (HCA, 2029)	Children/Youth - Strategic Planning and Service improvement	Y
Substance Use Recovery Services Advisory Committee (SURSAC) (HCA, 2026)	Substance Use	Y
Crisis Response Improvement Strategy (CRIS) (Harborview until 1/1/25, then HCA until 2026)	Crisis Response (988 Line Implementation and service coordination)	Y
Washington State Tribal Opioid/Fentanyl Task Force (HCA, 2025)	Opioid Response	Y
HCA & State Prevention Enhancement Policy Consortium, 2021	Opioid Response	Y
Agricultural industry workforce behavioral health improvement and suicide prevention workgroup. (2025)	Suicide Prevention	Y
The Washington State Prevention Enhancement (SPE) Policy Consortium HCA & DOH. (2023-27)	Statewide Strategic Plan for SUD and MH promotion and prevention	Y
Behavioral Health Workforce Assessment (Workforce Board)	Workforce Development	N
Behavioral Health Recovery System Transformation Task Force (BHRST) (2022)	Behavioral health system, physical infrastructure, & workforce	N
Select Committee on Quality in State Hospitals SCQUISH (2017)	State Hospital bed capacity. Beds and funding for more long-term inpatient community beds.	N




P-25 Work Group Update

Washington State Joint Legislative and Executive Committee on Behavioral Health 2024-25



OVERARCHING ISSUES





Discussion: Behavioral Health Continuum of Care

8/5/2024

Our Committee Focus:

- Strengthening access to **prevention** and **early intervention** services.
- **Reducing reliance on deep-end crisis** services and state care.
- Strengthening access to all levels of care at the **community level**.
- **All ages** (pre-natal through adult).

Overarching issues identified by Committee members


- Equity and disproportionate impacts; closing gaps
- Workforce development and education
- Developmental disabilities
- Insurance and Medicaid coverage
- Trauma-informed and culturally responsive care
- Supportive housing
- Transitions between services
- Availability of community services
- School system(s)

Behavioral Health JLEC

Discussion Questions

Does this Continuum of Care reflect a useful organizing framework for the Committee's strategic planning work?

- Is there anything that needs to change?
- Is anything missing?



Discussion:

Unmet Needs and
Challenges

Focusing on the first "bubbles" on the Continuum (Promotion, Prevention, Early Intervention; and Outpatient and Integrated Care)

1. What unmet **needs** do you see in these areas?
2. What **barriers/challenges** exist that prevent needs from being met?
3. What **priorities** should this committee's Strategic Plan include?



Discussion:

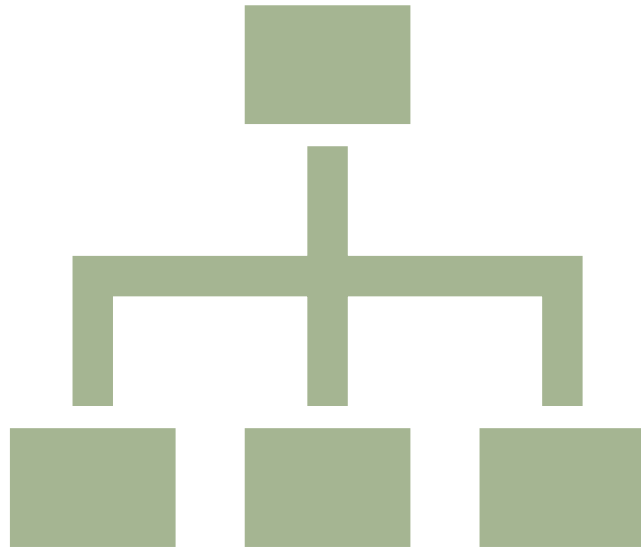
**Committee
Informational Needs**

What additional information is needed to support Committee's development of strategic goals?

- Information or data on unmet needs along the Continuum of Care
 - Prevention/Early Intervention
 - Community-based Outpatient and Integrated Care
 - Other
- More information on efforts of other workgroups
- Other information needs

Discuss Subcommittee Formation

What organization makes sense given the top priorities identified today?





Comments by the Public

Next Meeting – In Person!

Sept. 23 - 10 am - 2 pm

University of Washington - Seattle
Behavioral Health Teaching Facility

Meeting will include a brief tour, work session and lunch.

Details to follow.

