

WISe Screening Report

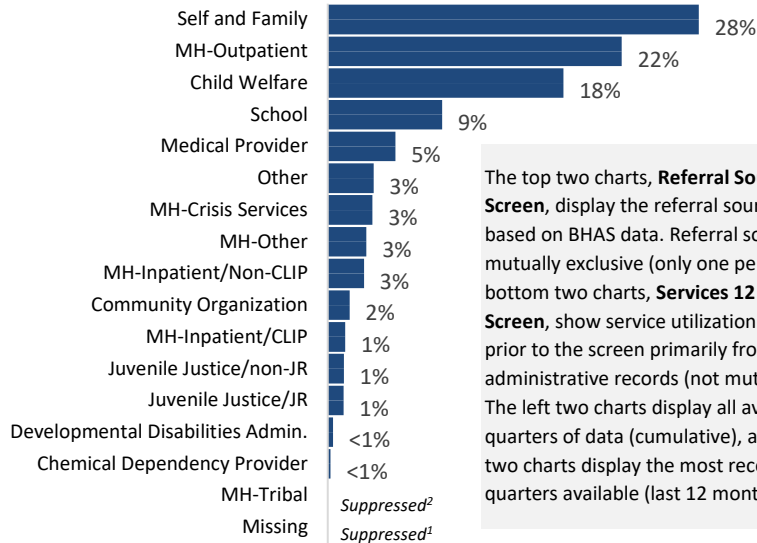
2024 QUARTER 2

Referral Sources and Service History

Referral Source for WISe Screen

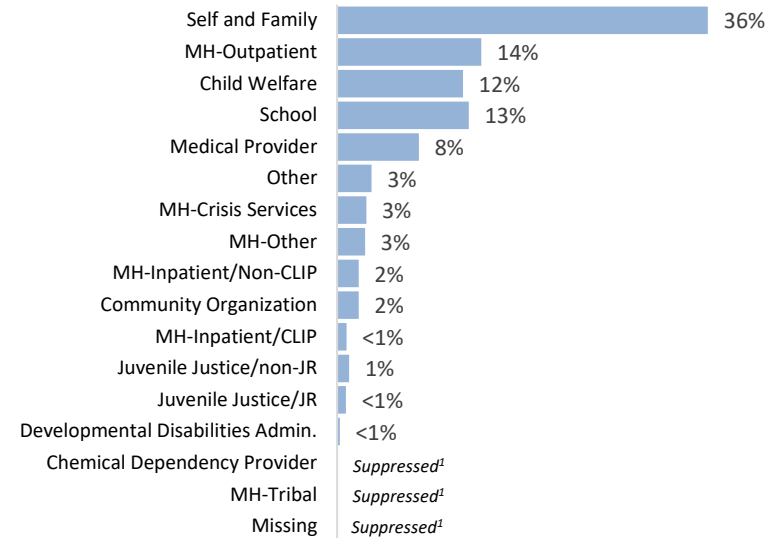
SOURCE: BHAS

CUMULATIVE July 2014 - December 2023



The top two charts, **Referral Sources for WISe Screen**, display the referral sources for screens based on BHAS data. Referral sources are mutually exclusive (only one per screen). The bottom two charts, **Services 12 Months Before Screen**, show service utilization in the year prior to the screen primarily from administrative records (not mutually exclusive). The left two charts display all available quarters of data (cumulative), and the right two charts display the most recent four quarters available (last 12 months).

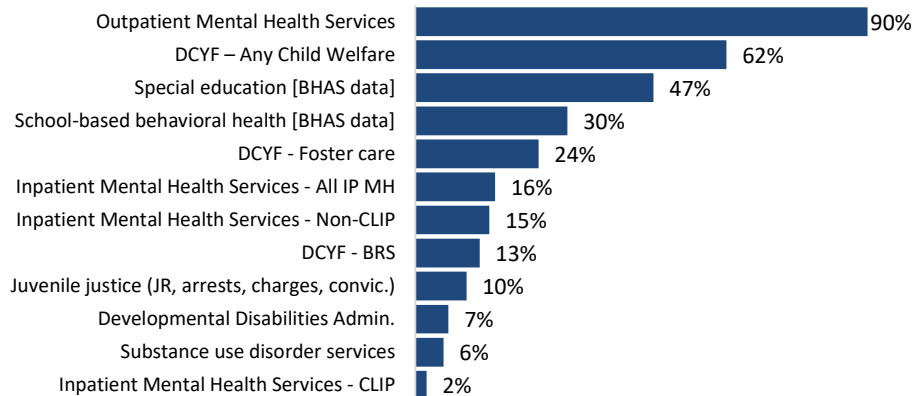
LAST 12 MONTHS January 2023 - December 2023



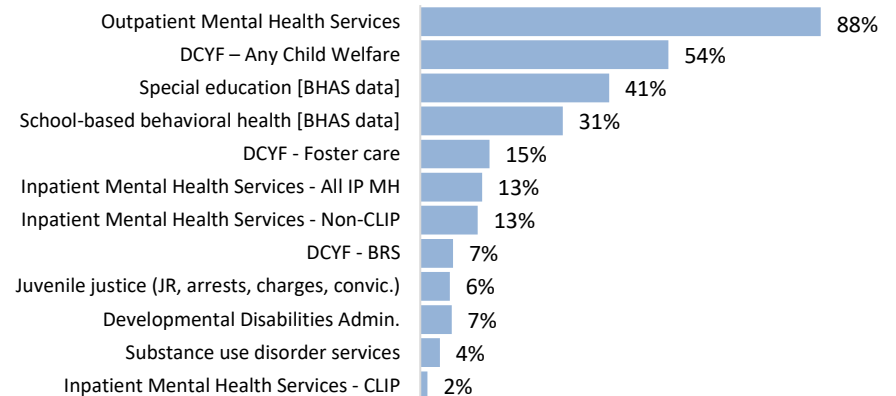
Services 12 Months Before Screen

SOURCE: Admin data, except education items from BHAS

CUMULATIVE July 2014 - September 2023



LAST 12 MONTHS October 2022 - September 2023

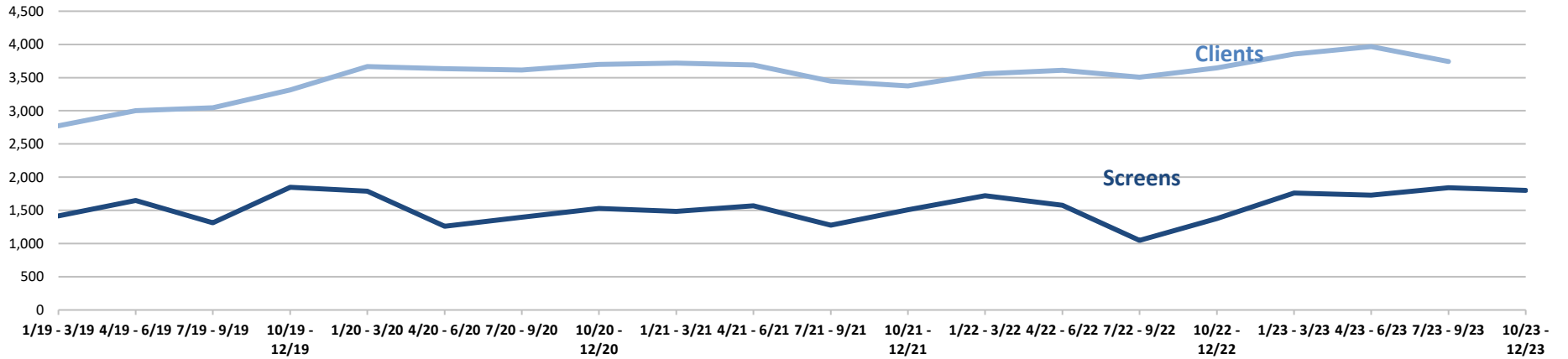


NOTES: Charts reflect data shown on page 3. See additional data notes on that page.

WISe Screening Report

2024 QUARTER 2

Quarterly Counts of Screens and Clients



QUARTER	NUMBER OF SCREENS (DUPLICATED)											NUMBER OF CLIENTS (UNDUPLICATED)										
	WASHINGTON	Great Rivers	Greater Columbia	King County	North Central	North Sound	Pierce County	Salish	Southwest	Spokane Region	Thurston Mason	WASHINGTON	Great Rivers	Greater Columbia	King County	North Central	North Sound	Pierce County	Salish	Southwest	Spokane Region	Thurston Mason
1/19 - 3/19	1,416	86	248	126	88	179	134	103	142	224	86	2,774	236	441	342	151	393	305	204	206	422	109
4/19 - 6/19	1,649	146	241	219	71	248	128	114	95	289	98	3,001	282	467	392	129	440	314	223	217	456	114
7/19 - 9/19	1,314	97	157	157	68	176	146	80	107	252	74	3,046	290	434	404	134	453	271	225	216	453	199
10/19 - 12/19	1,848	152	231	179	76	242	231	137	135	353	112	3,316	334	473	450	122	490	362	218	257	453	188
1/20 - 3/20	1,790	138	239	207	73	266	252	136	113	281	85	3,665	352	522	528	115	527	412	246	265	472	260
4/20 - 6/20	1,260	83	181	162	57	186	162	61	97	198	73	3,634	358	510	434	95	556	432	237	281	466	302
7/20 - 9/20	1,397	134	202	127	51	200	178	86	93	270	56	3,615	388	477	423	96	560	462	221	303	438	306
10/20 - 12/20	1,527	151	207	180	68	214	173	101	102	272	59	3,698	426	456	441	94	533	458	227	310	481	326
1/21 - 3/21	1,486	144	218	138	68	191	157	113	115	278	64	3,719	409	458	432	96	560	435	244	306	526	311
4/21 - 6/21	1,568	179	218	126	75	218	173	106	89	263	121	3,691	396	481	413	114	553	384	260	263	547	320
7/21 - 9/21	1,278	144	119	109	58	165	150	108	89	251	85	3,448	404	424	364	111	518	358	247	237	535	303
10/21 - 12/21	1,509	166	197	125	54	175	219	118	62	275	118	3,373	413	391	347	114	463	341	271	239	548	285
1/22 - 3/22	1,721	174	240	120	114	227	214	124	106	304	98	3,557	431	413	339	140	477	385	277	258	589	294
4/22 - 6/22	1,576	178	249	99	80	197	162	99	93	284	135	3,612	487	459	306	144	481	366	286	269	558	292
7/22 - 9/22	1,048	133	171	73	62	86	173	61	41	144	104	3,507	445	425	307	149	470	390	258	287	543	282
10/22 - 12/22	1,378	163	227	87	79	126	214	79	67	231	105	3,647	412	473	311	151	485	440	235	259	547	363
1/23 - 3/23	1,761	200	303	142	77	188	252	106	107	316	70	3,856	429	531	356	164	535	436	231	265	602	352
4/23 - 6/23	1,730	201	271	151	77	225	191	101	128	282	103	3,967	436	550	392	178	563	429	253	259	598	340
7/23 - 9/23	1,841	179	303	173	65	212	187	138	127	271	186	3,742	422	541	393	153	505	422	264	275	523	285
10/23 - 12/23	1,802	151	266	186	75	187	242	124	125	326	120											

NOTES: Counts of screens (not unduplicated; a child may have more than one in each time period) from WISe screening data (BHAS). Counts of clients (unduplicated; at most one in each time period at the state level) from administrative data (ProviderOne). Due to data lag, service data not available as recently as screening data. Service data may be incomplete in the last quarter shown. Regions reflect current HCA managed care regions.

WiSE Screening Report

2024 QUARTER 2

Statewide Screens

Duplicated Screens

Referral Source for WiSE Screen

SOURCE: BHAS

Referral Source for WiSE Screen	WASHINGTON STATE				WASHINGTON STATE, Last 8 Quarters of Data															
	Cumulative 07/14-12/23		Last 12 months 01/23-12/23		01/22-03/22		04/22-06/22		07/22-09/22		10/22-12/22		01/23-03/23		04/23-06/23		07/23-09/23		10/23-12/23	
	N	PCT	N	PCT	N	PCT	N	PCT	N	PCT	N	PCT	N	PCT	N	PCT	N	PCT	N	PCT
Self and Family	12,605	27.9%	2,584	36.2%	562	32.7%	559	35.5%	419	40.0%	505	36.6%	652	37.0%	616	35.6%	689	37.4%	627	34.8%
MH-Outpatient	9,988	22.1%	1,005	14.1%	236	13.7%	216	13.7%	107	10.2%	169	12.3%	216	12.3%	288	16.6%	270	14.7%	231	12.8%
Child Welfare	8,005	17.7%	877	12.3%	308	17.9%	243	15.4%	204	19.5%	178	12.9%	204	11.6%	212	12.3%	245	13.3%	216	12.0%
School	3,883	8.6%	918	12.9%	230	13.4%	195	12.4%	56	5.3%	214	15.5%	238	13.5%	233	13.5%	144	7.8%	303	16.8%
Medical Provider	2,298	5.1%	570	8.0%	101	5.9%	119	7.6%	90	8.6%	94	6.8%	150	8.5%	112	6.5%	172	9.3%	136	7.5%
Other	1,558	3.4%	240	3.4%	37	2.1%	40	2.5%	42	4.0%	50	3.6%	63	3.6%	46	2.7%	66	3.6%	65	3.6%
MH-Crisis Services	1,519	3.4%	203	2.8%	41	2.4%	34	2.2%	15	1.4%	31	2.2%	56	3.2%	45	2.6%	50	2.7%	52	2.9%
MH-Other	1,312	2.9%	195	2.7%	63	3.7%	52	3.3%	31	3.0%	35	2.5%	48	2.7%	52	3.0%	55	3.0%	40	2.2%
MH-Inpatient/Non-CLIP	1,231	2.7%	151	2.1%	57	3.3%	53	3.4%	33	3.1%	33	2.4%	45	2.6%	31	1.8%	36	2.0%	39	2.2%
Community Organization	742	1.6%	150	2.1%	35	2.0%	22	1.4%	13	1.2%	21	1.5%	50	2.8%	33	1.9%	37	2.0%	30	1.7%
MH-Inpatient/CLIP	590	1.3%	65	0.9%	18	1.0%	18	1.1%	13	1.2%	13	0.9%	---	---	19	1.1%	24	1.3%	---	---
Juvenile Justice/non-JR	550	1.2%	84	1.2%	12	0.7%	---	---	---	---	11	0.8%	14	0.8%	23	1.3%	24	1.3%	23	1.3%
Juvenile Justice/JR	537	1.2%	62	0.9%	12	0.7%	13	0.8%	---	---	14	1.0%	---	---	14	0.8%	24	1.3%	17	0.9%
Developmental Disabilities Admin.	177	0.4%	18	0.3%	---	---	---	---	---	---	---	---	---	---	---	---	---	---	---	---
Chemical Dependency Provider	89	0.2%	---	---	---	---	---	---	---	---	---	---	---	---	---	---	---	---	---	---
MH-Tribal	---	---	---	---	---	---	---	---	---	---	---	---	---	---	---	---	---	---	---	---
Missing	---	---	---	---	---	---	---	---	---	---	---	---	---	---	---	---	---	---	---	---
TOTAL	45,170	100%	7,134	100%	1,721	100%	1,576	100%	1,048	100%	1,378	100%	1,761	100%	1,730	100%	1,841	100%	1,802	100%

Services 12 Months Before Screen

SOURCE: Admin data, except BHAS education items

Services 12 Months Before Screen	Cumulative 07/14-09/23		Last 12 months 10/22-09/23		10/21-12/21		01/22-03/22		04/22-06/22		07/22-09/22		10/22-12/22		01/23-03/23		04/23-06/23		07/23-09/23	
	N	PCT	N	PCT	N	PCT	N	PCT	N	PCT	N	PCT	N	PCT	N	PCT	N	PCT	N	PCT
Outpatient Mental Health Services	38,758	89.5%	5,860	87.5%	1,286	85.4%	1,469	85.5%	1,344	85.4%	895	85.6%	1,190	86.5%	1,553	88.3%	1,518	87.9%	1,599	87.1%
DCYF – Any Child Welfare	26,663	61.6%	3,631	54.2%	834	55.4%	987	57.4%	897	57.0%	635	60.8%	785	57.0%	918	52.2%	965	55.9%	963	52.5%
Special education [BHAS data]	20,423	47.2%	2,762	41.2%	590	39.2%	744	43.3%	682	43.4%	436	41.7%	545	39.6%	695	39.5%	746	43.2%	776	42.3%
School-based behavioral health [BHAS data]	13,036	30.1%	2,086	31.1%	423	28.1%	565	32.9%	506	32.2%	314	30.0%	436	31.7%	539	30.6%	588	34.0%	523	28.5%
DCYF - Foster care	10,569	24.4%	1,013	15.1%	286	19.0%	370	21.5%	293	18.6%	238	22.8%	230	16.7%	290	16.5%	234	13.5%	259	14.1%
Inpatient Mental Health Services - All IP MH	6,835	15.8%	903	13.5%	205	13.6%	228	13.3%	246	15.6%	157	15.0%	181	13.2%	233	13.2%	258	14.9%	231	12.6%
Inpatient Mental Health Services - Non-CLIP	6,351	14.7%	840	12.5%	197	13.1%	203	11.8%	221	14.0%	137	13.1%	167	12.1%	221	12.6%	238	13.8%	214	11.7%
DCYF - BRS	5,518	12.7%	481	7.2%	125	8.3%	164	9.5%	121	7.7%	118	11.3%	103	7.5%	115	6.5%	123	7.1%	140	7.6%
Juvenile justice (JR, arrests, charges, convic.)	4,388	10.1%	432	6.5%	90	6.0%	83	4.8%	86	5.5%	67	6.4%	74	5.4%	102	5.8%	109	6.3%	147	8.0%
Developmental Disabilities Admin.	2,842	6.6%	459	6.9%	81	5.4%	96	5.6%	111	7.1%	68	6.5%	81	5.9%	103	5.9%	125	7.2%	150	8.2%
Substance use disorder services	2,431	5.6%	286	4.3%	59	3.9%	70	4.1%	70	4.5%	55	5.3%	43	3.1%	74	4.2%	84	4.9%	85	4.6%
Inpatient Mental Health Services - CLIP	958	2.2%	105	1.6%	12	0.8%	36	2.1%	33	2.1%	29	2.8%	23	1.7%	20	1.1%	31	1.8%	31	1.7%
TOTAL with linked data available	43,298	100%	6,697	100%	1,506	100%	1,719	100%	1,573	100%	1,045	100%	1,376	100%	1,759	100%	1,727	100%	1,835	100%
TOTAL	43,368		6,710		1,509		1,721		1,576		1,048		1,378		1,761		1,730		1,841	

NOTES: Due to a longer data lag for administrative data relative to screening data, time periods are defined differently for the upper and lower tables.